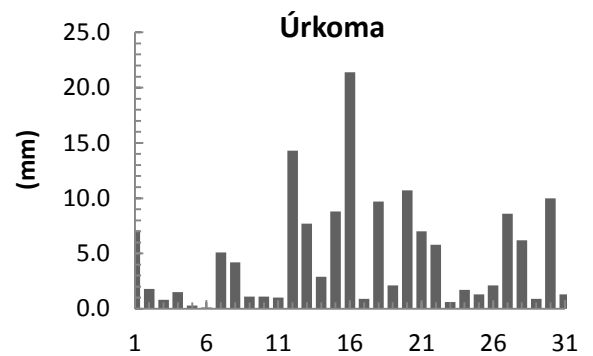
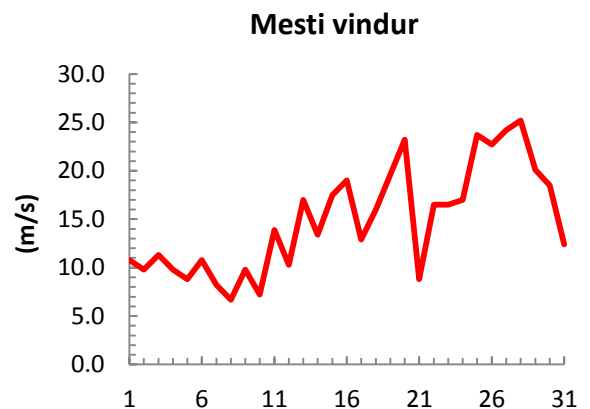
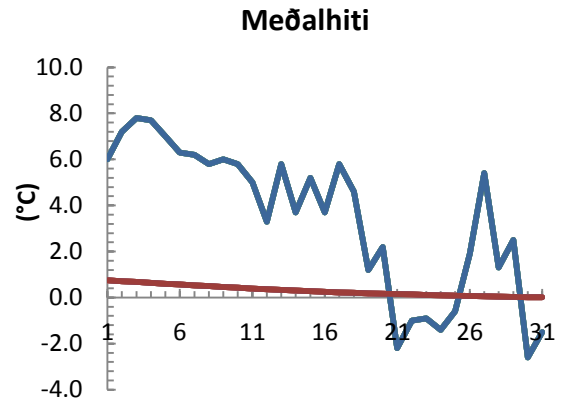


dagur	meðalhiti (°C)	Hámark (°C)	Lágmark (°C)	Úrkoma (mm)	Úrkomutegund	Snjódýpt (cm)	Snjöhula (0-4)	Sólskin (klst)	Meðalvindur (m/s)	Mesti vindur (m/s)	Hviða (m/s)
1	6.0	7.8	3.9	7.1	ri	0	0		6.4	10.8	13.4
2	7.2	7.7	7.0	1.8	ri	0	0		8.0	9.8	12.9
3	7.8	8.1	6.9	0.8	ri	0	0		9.3	11.3	16.0
4	7.7	8.4	7.3	1.5	ri	0	0		7.5	9.8	13.4
5	7.0	8.1	6.3	0.3	ri	0	0		6.6	8.8	11.3
6	6.3	8.7	5.6	0.1	ri	0	0		7.6	10.8	16.0
7	6.2	9.3	5.6	5.1	ri	0	0		4.2	8.2	9.3
8	5.8	6.3	5.5	4.2	ri	0	0		3.9	6.7	8.8
9	6.0	6.7	4.5	1.1	ri	0	0		5.8	9.8	12.9
10	5.8	7.0	5.0	1.1	ri	0	0		3.9	7.2	10.3
11	5.0	7.3	3.5	1.0	ri	0	0		6.1	13.9	19.0
12	3.3	4.3	2.7	14.3	ri	0	0		5.7	10.3	13.9
13	5.8	7.5	2.1	7.7	sl	0	0		12.0	17.0	24.2
14	3.7	6.3	2.5	2.9	ri	0	0		6.8	13.4	17.5
15	5.2	8.3	1.0	8.8	ri	0	0		9.3	17.5	22.7
16	3.7	7.2	1.9	21.4	sl	0	0		9.8	19.0	25.7
17	5.8	7.5	2.7	0.9	sl	0	0		6.4	12.9	18.0
18	4.6	7.4	2.7	9.7	ri	0	0		9.5	16.0	21.6
19	1.2	4.8	-0.9	2.1	sl	2	4		11.8	19.6	25.2
20	2.2	5.5	0.1	10.7	sl	0	0		13.1	23.2	30.9
21	-2.2	1.6	-3.6	7.0	sl	12	4		4.4	8.8	11.3
22	-1.0	0.6	-4.5	5.8	sn	16	4		10.9	16.5	20.1
23	-0.9	0.4	-2.7	0.6	sn	9	4		6.1	16.5	21.1
24	-1.4	1.4	-3.4	1.7	sn	9	4		6.9	17.0	21.6
25	-0.6	1.2	-3.4	1.3	sn	10	4		10.6	23.7	26.8
26	1.9	2.0	0.0	2.1	sl	9	4		12.4	22.7	27.3
27	5.4	9.3	1.5	8.6	sl	0	2		17.2	24.2	31.4
28	1.3	4.7	-0.4	6.2	sl	0	2		17.5	25.2	33.5
29	2.5	5.9	1.6	0.9	sl	0	0		15.1	20.1	29.3
30	-2.6	2.9	-3.3	10.0	sl	0	2		4.9	18.5	23.7
31	-1.5	0.2	-3.7	1.3	sn	5	4		6.0	12.4	16.0



Meðalhiti (°C)	3.5
Frávik frá meðaltali 1961 - 1990 (°C)	3.7
Meðalhámarkshiti (°C)	5.6
Meðallágmarkshiti (°C)	1.7
Úrkomumagn (mm)	148.1
Hlutfall úrkomu af meðaltali 1961-1990 (%)	188.2
Meðalvindhraði (m/s)	8.6

