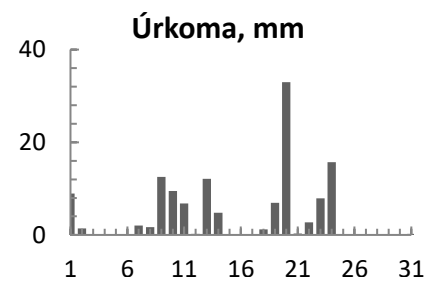
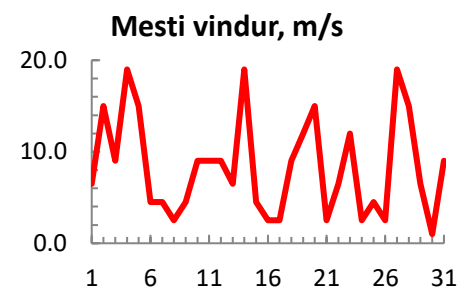
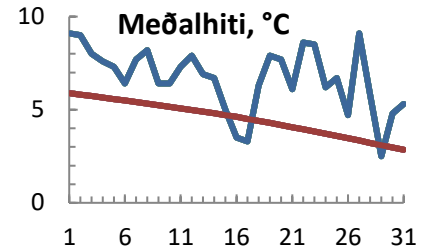


dagur	meðalhiti (°C)	Hámark (°C)	Lágmark (°C)	Úrkoma (mm)	Úrkomutegund	Snjódýpt (cm)	Snjóhula (0-4)	Sólskin (klst)	Meðalvindur (m/s)	Mesti vindur (m/s)	Hviða (m/s)
1	9.1	11.0	8.2	8.9	ri	0	0		3.8	6.5	
2	9.0	11.0	6.7	1.4	ri	0	0		9.2	15.0	
3	8.0	11.4	5.1			0	0		3.4	9.0	
4	7.6	9.0	6.5			0	0		13.6	19.0	
5	7.3	9.5	6.3			0	0		8.5	15.0	
6	6.4	8.2	1.9			0	0		2.9	4.5	
7	7.7	8.8	6.9	2.0	ri	0	0		2.8	4.5	
8	8.2	10.2	7.1	1.7	ri	0	0		1.1	2.5	
9	6.4	10.0	4.5	12.5	ri	0	0		1.8	4.5	
10	6.4	8.0	3.7	9.5	ri	0	0		5.7	9.0	
11	7.3	8.2	5.9	6.8	ri	0	0		5.3	9.0	
12	7.9	9.6	5.3	0.2	ri	0	0		4.4	9.0	
13	6.9	8.8	6.7	12.1	ri	0	0		2.9	6.5	
14	6.7	9.5	3.5	4.8	ri	0	0		8.7	19.0	
15	5.0	9.0	2.7			0	0		2.1	4.5	
16	3.5	8.8	0.5			0	0		1.1	2.5	
17	3.3	6.6	0.4			0	0		2.3	2.5	
18	6.3	7.2	2.7	1.2	ri	0	0		4.6	9.0	
19	7.9	9.0	6.1	6.9	ri	0	0		9.5	12.0	
20	7.7	10.0	7.5	33.0	ri	0	0		6.2	15.0	
21	6.1	7.6	2.3	0.3	ri	0	0		0.9	2.5	
22	8.6	9.6	6.3	2.7	ri	0	0		3.0	6.5	
23	8.5	9.8	8.2	7.9	ri	0	0		5.7	12.0	
24	6.2	9.2	4.7	15.7	ri	0	0		0.8	2.5	
25	6.7	8.8	4.5			0	0		2.1	4.5	
26	4.7	8.0	1.6			0	0		1.3	2.5	
27	9.1	13.0	3.3			0	0		9.1	19.0	
28	5.8	12.0	3.3			0	0		6.2	15.0	
29	2.5	4.8	0.1			0	0		2.3	6.5	
30	4.8	6.5	2.4			0	0		0.8	1.0	
31	5.3	7.4	4.4	0.2	ri	0	0		0.6	9.0	



Meðalhiti (°C)	6.7
Frávik frá meðaltali 1961 - 1990 (°C)	2.2
Meðalhámarkshiti (°C)	9.1
Meðallágmarkshiti (°C)	4.5
Úrkomumagn (mm)	127.8
Hlutfall úrkomu af meðaltali 1961-1990 (%)	81.1
Meðalvindhraði (m/s)	4.3