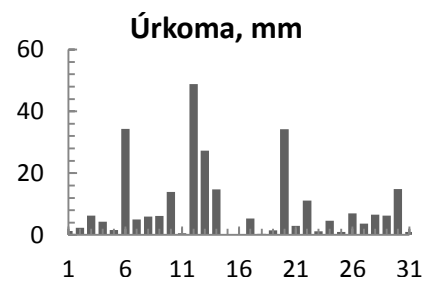
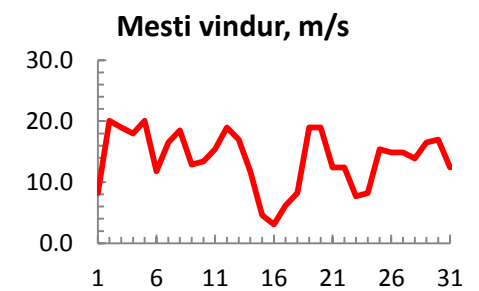
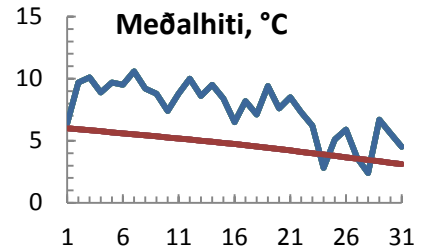


dagur	meðalhiti (°C)	Hámark (°C)	Lágmark (°C)	Úrkoma (mm)	Úrkomutegund	Snjódýpt (cm)	Snjóhula (0-4)	Sólskin (klst)	Meðalvindur (m/s)	Mesti vindur (m/s)	Hviða (m/s)
1	6.4	8.9	2.4	1.3	ri	0	0		4.8	8.2	11.8
2	9.7	10.7	7.6	2.3	ri	0	0		12.0	20.1	28.8
3	10.1	11.5	6.2	6.2	sl	0	0		14.0	19.0	26.8
4	8.9	11.6	7.0	4.3	ri	0	0		10.5	18.0	24.2
5	9.7	10.9	9.4	1.6	ri	0	0		14.0	20.1	27.3
6	9.5	11.3	8.1	34.3	ri	0	0		7.8	11.8	16.0
7	10.6	11.7	7.6	5.0	ri	0	0		13.8	16.5	23.7
8	9.2	10.7	7.8	5.9	ri	0	0		10.7	18.5	27.8
9	8.8	11.2	7.7	6.1	ri	0	0		9.1	12.9	18.5
10	7.4	8.5	6.5	13.9	ri	0	0		7.0	13.4	17.0
11	8.8	10.3	6.5	0.6	ri	0	0		10.4	15.4	21.1
12	10.0	10.7	9.6	48.8	ri	0	0		14.5	19.0	26.3
13	8.6	11.0	6.6	27.3	ri	0	0		6.9	17.0	21.1
14	9.5	11.0	8.9	14.7	ri	0	0		6.5	11.8	16.5
15	8.4	10.1	7.5	0.2	ri	0	0		2.2	4.6	5.7
16	6.5	9.2	6.0	0.1	ri	0	0		1.5	3.1	4.1
17	8.2	10.9	5.4	5.3	ri	0	0		2.9	6.2	8.2
18	7.1	11.0	5.4	0.3	ri	0	0		5.2	8.2	11.8
19	9.4	10.9	6.5	1.5	ri	0	0		15.2	19.0	26.8
20	7.6	10.6	6.2	34.2	ri	0	0		10.6	19.0	25.7
21	8.5	10.5	6.9	2.9	ri	0	0		8.4	12.4	18.0
22	7.3	10.0	5.7	11.1	ri	0	0		6.4	12.4	17.0
23	6.2	7.5	5.5	1.2	ri	0	0		5.0	7.7	9.8
24	2.8	6.7	2.1	4.6	ri	0	0		4.1	8.2	12.9
25	5.1	8.6	1.1	1.0	ri	0	0		8.9	15.4	19.6
26	5.9	7.9	5.1	7.0	ri	0	0		9.3	14.9	19.0
27	3.6	5.9	2.3	3.7	sl	0	0		9.4	14.9	19.0
28	2.4	4.8	1.2	6.6	sl	0	2		7.8	13.9	18.0
29	6.7	9.5	2.0	6.3	sl	0	0		10.0	16.5	23.2
30	5.6	9.2	4.9	14.8	ri	0	0		11.9	17.0	21.6
31	4.5	6.4	3.0	1.0	ri	0	0		5.0	12.4	16.5



Meðalhiti (°C)	7.5
Frávik frá meðaltali 1961 - 1990 (°C)	2.9
Meðalhámarkshiti (°C)	9.7
Meðallágmarkshiti (°C)	5.8
Úrkomumagn (mm)	274.1
Hlutfall úrkomu af meðaltali 1961-1990 (%)	237.7
Meðalvindhraði (m/s)	8.6