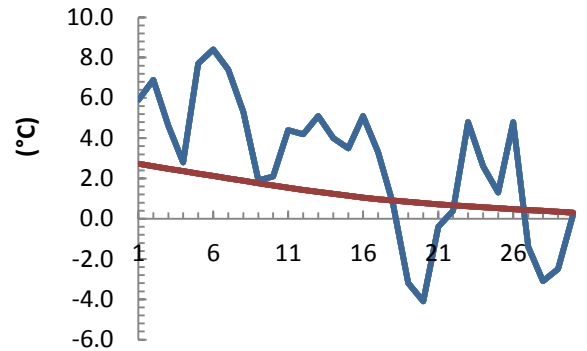
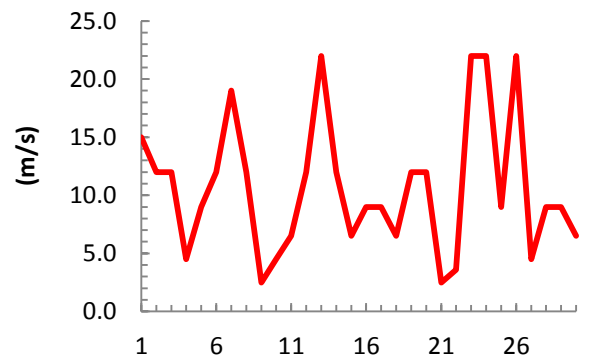


dagur	meðalhiti (°C)	Hámark (°C)	Lágmark (°C)	Úrkoma (mm)	Úrkomutegund	Snjódýpt (cm)	Snjóhúla (0-4)	Sólskin (klst)	Meðalvindur (m/s)	Mesti vindur (m/s)	Hviða (m/s)
1	5.9	8.6	1.0	1.7	ri	0	0		6.0	15.0	
2	6.9	8.2	6.4	2.4	ri	0	0		8.5	12.0	
3	4.6	7.4	2.6	2.5	ri	0	0		4.7	12.0	
4	2.8	5.5	0.7	0.1	ri	0	0		1.9	4.5	
5	7.7	8.4	2.7	3.0	ri	0	0		6.4	9.0	
6	8.4	9.4	7.5	17.1	ri	0	0		5.2	12.0	
7	7.4	9.5	6.9	27.0	ri	0	0		15.2	19.0	
8	5.3	7.4	5.1	4.9	ri	0	0		7.0	12.0	
9	1.9	6.0	0.3	1.5	ri	0	0		1.1	2.5	
10	2.1	3.5	0.7	0.7	ri	0	0		1.5	4.5	
11	4.4	5.5	1.5	5.6	ri	0	0		3.3	6.5	
12	4.2	6.0	2.1	5.1	ri	0	0		6.9	12.0	
13	5.1	6.4	2.4	0.0		0	0		17.5	22.0	
14	4.0	6.6	3.9	0.0		0	0		3.0	12.0	
15	3.5	4.8	0.7	9.3	sl	0	0		3.6	6.5	
16	5.1	7.4	3.4	2.3	ri	0	0		6.9	9.0	
17	3.3	4.8	2.7	14.0	ri	0	0		6.6	9.0	
18	0.7	3.2	-0.3	0.0		0	0		5.5	6.5	
19	-3.2	-0.2	-4.2	0.0		0	0		8.1	12.0	
20	-4.1	-3.0	-5.7	0.0		0	0		4.8	12.0	
21	-0.4	4.6	-5.7	0.0		0	0		1.1	2.5	
22	0.4	1.6	-2.3	0.0		0	0		1.1	3.6	
23	4.8	5.5	0.7	5.2	ri	0	0		14.4	22.0	
24	2.6	5.5	1.9	0.1	ri	0	0		13.0	22.0	
25	1.3	3.0	-0.5	0.0		0	0		3.5	9.0	
26	4.8	7.0	0.4	0.1	ri	0	0		14.1	22.0	
27	-1.4	4.4	-2.1	0.0		0	0		3.2	4.5	
28	-3.1	-0.8	-4.5	0.1	sn	0	4		5.1	9.0	
29	-2.5	0.4	-5.7	2.7	sn	3	4		4.1	9.0	
30	0.2	2.4	-0.7	0.0		3	4		5.8	6.5	

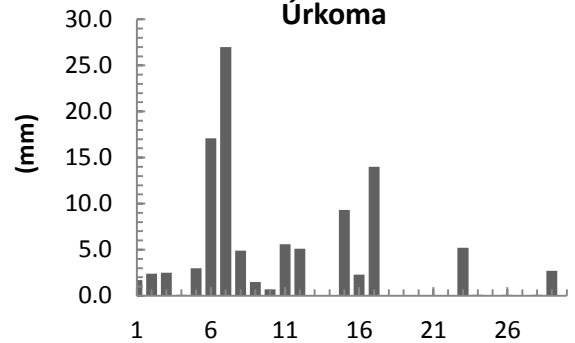
### Meðalhiti



### Mesti vindur



### Úrkoma



Meðalhiti (°C)	2.8
Frávik frá meðaltali 1961 - 1990 (°C)	0.8
Meðalhámarkshiti (°C)	5.0
Meðallágmarkshiti (°C)	0.7
Úrkomumagn (mm)	105.4
Hlutfall úrkomu af meðaltali 1961-1990 (%)	104.5
Meðalvindhraði (m/s)	6.3