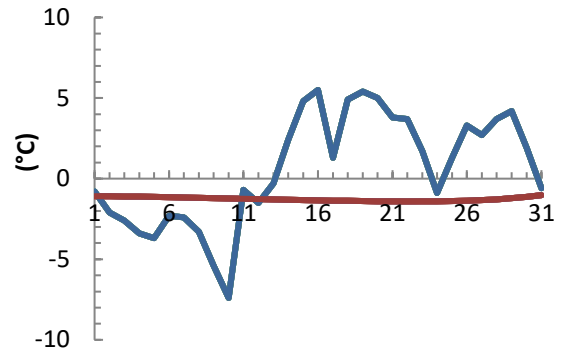


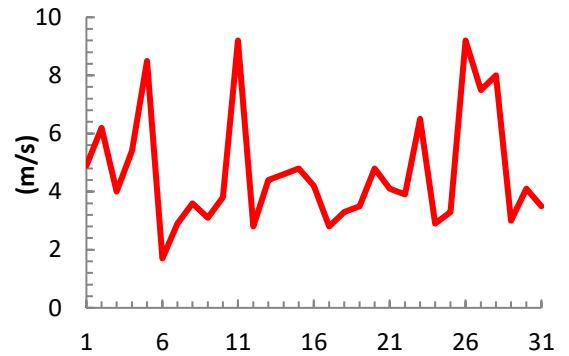
dagur	meðalhiti (°C)	Hámark (°C)	Lágmark (°C)	Úrkoma (mm)	Úrkomutegund	Snjódýpt (cm)	Snjöhula (0-4)	Sólskin (klst)	Meðalvindur (m/s)	Mesti vindur (m/s)	Hviða (m/s)
1	-0.8	2.8	-1.6	1.7	sl	0	2	0.0	2.2	4.9	10.8
2	-2.1	0.0	-2.6	0.7	sn	0	2	0.3	3.7	6.2	9.6
3	-2.6	-0.7	-3.9	5.2	sn	13	4	0.8	1.9	4.0	7.3
4	-3.4	-2.1	-4.6	2.5	sn	18	4	0.0	2.4	5.4	10.3
5	-3.7	-3.0	-5.5	12.1	sn	28	4	0.0	2.4	8.5	12.4
6	-2.3	0.7	-4.9	1.2	sn	32	4	0.0	0.7	1.7	3.4
7	-2.4	0.1	-3.6	0.9	sn	35	4	2.3	1.7	2.9	5.0
8	-3.3	-0.9	-5.1	4.9	sn	40	4	0.0	1.1	3.6	5.3
9	-5.4	-1.6	-7.1	10.0	sn	59	4	7.6	1.7	3.1	5.5
10	-7.4	-4.4	-11.1	0.0		59	4	3.5	1.9	3.8	6.7
11	-0.7	1.1	-6.9	5.0	sn	68	4	3.3	1.5	9.2	14.2
12	-1.5	1.9	-4.4	0.4	sn	68	4	5.6	0.7	2.8	5.3
13	-0.3	1.8	-4.0	0.0		66	4	0.9	1.8	4.4	8.5
14	2.4	3.4	0.5	0.0		60	4	0.0	1.4	4.6	9.5
15	4.8	5.4	3.0	0.1	ri	52	4	0.0	1.2	4.8	8.4
16	5.5	10.6	4.2	0.0		40	4	8.4	1.5	4.2	8.5
17	1.3	6.8	0.6	0.0		0	2	0.0	1.0	2.8	4.1
18	4.9	10.3	-2.5	0.1	sl	0	2	9.3	1.3	3.3	5.9
19	5.4	8.7	1.9	0.0		0	2	5.6	2.0	3.5	7.1
20	5.0	7.3	4.3	0.0		20	4	0.6	2.2	4.8	9.1
21	3.8	8.0	0.2	0.5	ri	0	2	5.7	1.5	4.1	8.0
22	3.7	7.6	2.1	2.3	ri	0	2	4.1	1.5	3.9	6.5
23	1.7	6.9	1.7	0.1	ri	0	2	1.2	2.0	6.5	9.1
24	-0.9	3.5	-4.9	0.0		0	2	10.1	1.4	2.9	5.3
25	1.3	4.5	-1.8	0.0		0	2	7.6	1.3	3.3	6.1
26	3.3	4.7	-0.6	0.0		0	2	2.6	4.9	9.2	20.1
27	2.7	4.7	2.6	0.0		0	2	0.2	4.6	7.5	16.8
28	3.7	4.9	1.2	0.0		0	2	1.4	3.0	8.0	15.4
29	4.2	7.8	2.4	0.0		0	2	6.4	1.1	3.0	5.9
30	1.9	6.6	1.0	1.1	ri	0	2	0.1	2.3	4.1	7.4
31	-0.6	2.2	-0.6	0.2	sl	0	2	0.0	1.4	3.5	6.8

Meðalhiti (°C)	0.6
Frávik frá meðaltali 1961 - 1990 (°C)	1.8
Meðalhámarkshiti (°C)	3.5
Meðallágmarkshiti (°C)	-1.6
Úrkomumagn (mm)	49.0
Hlutfall úrkomu af meðaltali 1961-1990 (%)	113.2
Meðalvindhraði (m/s)	1.9
Sólskinsstundir (klst)	87.6

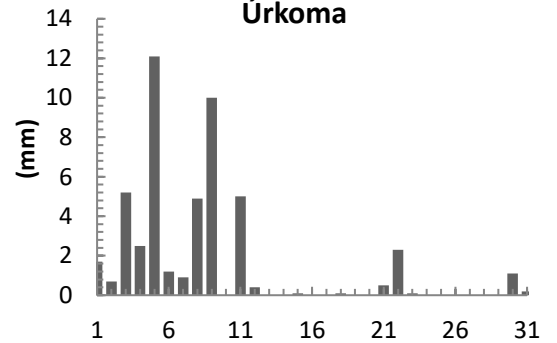
Meðalhiti



Mesti vindur



Úrkoma



Sólskin

