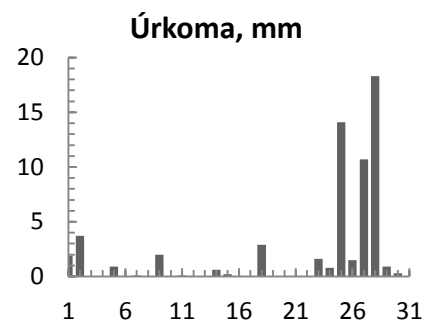
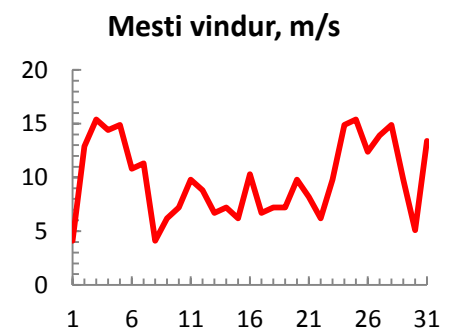
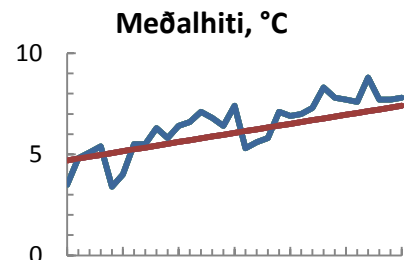


dagur	meðalhiti (°C)	Hámark (°C)	Lágmark (°C)	Úrkoma (mm)	Úrkomutegund	Snjódýpt (cm)	Snjöhula (0-4)	Sólskin (klst)	Meðalvindur (m/s)	Mesti vindur (m/s)	Hviða (m/s)
1	3.5	6.2	2.0	1.9	ri	0	0		2.1	4.1	5.1
2	4.8	7.9	2.6	3.7	ri	0	0		6.6	12.9	16.5
3	5.1	7.7	2.5	0.0		0	0		10.2	15.4	20.6
4	5.4	9.6	3.0			0	0		11.1	14.4	18
5	3.4	7.3	3.2	0.9	ri	0	0		11.9	14.9	19
6	4.0	6.7	2.2	0.0		0	0		7.6	10.8	13.4
7	5.5	9.0	2.3	0.1	ri	0	0		7.1	11.3	14.9
8	5.5	8.6	3.1			0	0		2.6	4.1	7.7
9	6.3	9.0	3.1	2.0	ri	0	0		3.8	6.2	9.3
10	5.8	8.9	4.3			0	0		5	7.2	9.3
11	6.4	8.6	4.9	0.1	ri	0	0		7.1	9.8	12.9
12	6.6	8.7	4.3	0.0		0	0		5.5	8.8	10.8
13	7.1	9.2	4.7	0.0		0	0		4.9	6.7	8.8
14	6.8	9.2	5.6	0.6	ri	0	0		4.7	7.2	9.3
15	6.4	9.0	5.4	0.2	ri	0	0		4.3	6.2	8.2
16	7.4	11.3	5.6			0	0		5.9	10.3	12.9
17	5.3	9.4	4.4	0.0		0	0		4.2	6.7	8.2
18	5.6	8.8	3.5	2.9	ri	0	0		4.7	7.2	10.8
19	5.8	8.4	3.4	0.0		0	0		3.7	7.2	9.3
20	7.1	10.6	2.4			0	0		5.5	9.8	11.8
21	6.9	9.7	4.6			0	0		5.2	8.2	11.8
22	7.0	10.4	2.0			0	0		3.2	6.2	10.3
23	7.3	9.6	4.5	1.6	ri	0	0		5.8	9.8	12.4
24	8.3	9.8	7.3	0.8	ri	0	0		11.7	14.9	19.6
25	7.8	9.8	6.1	14.1	ri	0	0		9.6	15.4	21.1
26	7.7	9.3	6.9	1.5	ri	0	0		9.5	12.4	16.5
27	7.6	8.3	7.1	10.7	ri	0	0		11.2	13.9	18.5
28	8.8	10.5	7.1	18.3	ri	0	0		9.8	14.9	20.1
29	7.7	9.9	7.6	0.9	ri	0	0		6.6	9.8	12.4
30	7.7	10.4	5.2	0.3	ri	0	0		3	5.1	8.2
31	7.8	10.1	4.8			0	0		8.6	13.4	18.5



Meðalhiti (°C)	6.4
Frávik frá meðaltali 1961 - 1990 (°C)	0.3
Meðalhámarkshiti (°C)	9.1
Meðallágmarkshiti (°C)	4.4
Úrkomumagn (mm)	60.6
Hlutfall úrkomu af meðaltali 1961-1990 (%)	92.5
Meðalvindhraði (m/s)	6.5