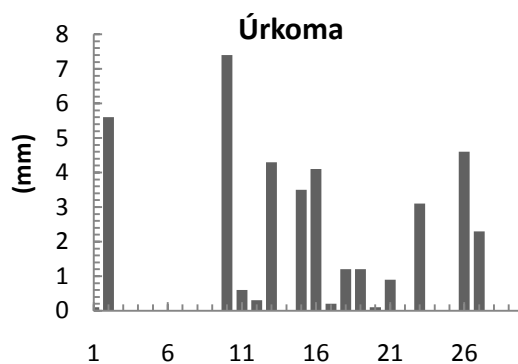
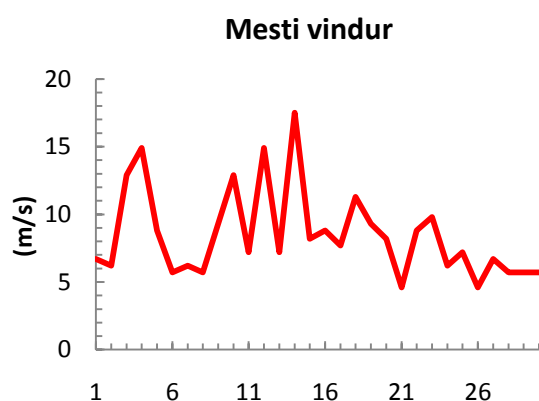
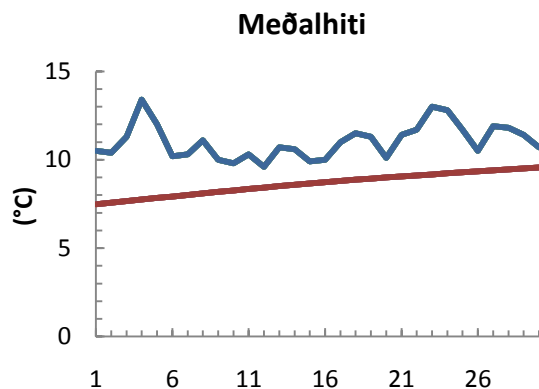


dagur	meðalhiti (°C)	Hámark (°C)	Lágmark (°C)	Úrkoma (mm)	Úrkomutegund	Snjódýpt (cm)	Snjöhula (0-4)	Sólskin (klst)	Meðalvindur (m/s)	Mesti vindur (m/s)	Hviða (m/s)
1	10.5	14.1	9.0	0.1	ri	0	0		4.0	6.7	9.8
2	10.4	13.8	7.2	5.6	ri	0	0		3.2	6.2	7.7
3	11.3	13.7	8.2	0.0		0	0		8.6	12.9	17.5
4	13.4	17.5	10.5	0.0		0	0		7.4	14.9	19.6
5	12.0	15.3	10.2			0	0		5.3	8.8	11.3
6	10.2	14.3	9.4			0	0		3.1	5.7	7.2
7	10.3	13.3	7.4			0	0		2.9	6.2	8.2
8	11.1	13.5	9.0			0	0		2.8	5.7	8.8
9	10.0	11.5	8.7			0	0		4.8	9.3	12.9
10	9.8	11.5	8.9	7.4	ri	0	0		9.1	12.9	19.6
11	10.3	14.0	8.4	0.6	ri	0	0		3.9	7.2	9.8
12	9.6	12.3	9.3	0.3	ri	0	0		9.7	14.9	21.6
13	10.7	13.5	8.7	4.3	ri	0	0		5.3	7.2	9.8
14	10.6	12.0	9.5			0	0		9.1	17.5	23.7
15	9.9	11.7	8.0	3.5	ri	0	0		3.7	8.2	10.8
16	10.0	12.1	8.0	4.1	ri	0	0		5.2	8.8	11.3
17	11.0	14.5	9.1	0.2	ri	0	0		4.2	7.7	10.3
18	11.5	13.5	8.5	1.2	ri	0	0		7.7	11.3	14.4
19	11.3	13.2	9.1	1.2	ri	0	0		6.4	9.3	11.3
20	10.1	12.3	8.5	0.1	ri	0	0		5.0	8.2	10.3
21	11.4	13.5	9.4	0.9	ri	0	0		3.2	4.6	6.7
22	11.7	13.9	10.8	0.0		0	0		4.3	8.8	11.8
23	13.0	16.5	8.9	3.1	ri	0	0		6.2	9.8	11.8
24	12.8	16.3	9.2			0	0		3.9	6.2	7.7
25	11.7	15.9	9.6			0	0		4.0	7.2	9.8
26	10.5	12.0	9.6	4.6	ri	0	0		2.3	4.6	5.1
27	11.9	14.7	9.8	2.3	ri	0	0		3.3	6.7	7.7
28	11.8	13.4	10.9	0.0		0	0		4.6	5.7	7.7
29	11.4	13.6	9.7			0	0		3.5	5.7	7.2
30	10.7	12.6	9.5	0.0		0	0		2.9	5.7	7.2



Meðalhiti (°C)	11.0
Frávik frá meðaltali 1961 - 1990 (°C)	2.3
Meðalhámarkshiti (°C)	13.7
Meðallágmarkshiti (°C)	9.1
Úrkomumagn (mm)	39.5
Hlutfall úrkomu af meðaltali 1961-1990 (%)	58.2
Meðalvindhraði (m/s)	5.0



