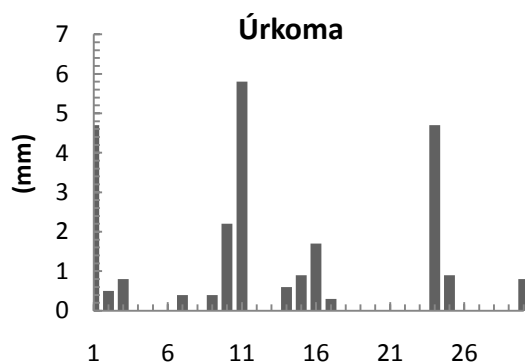
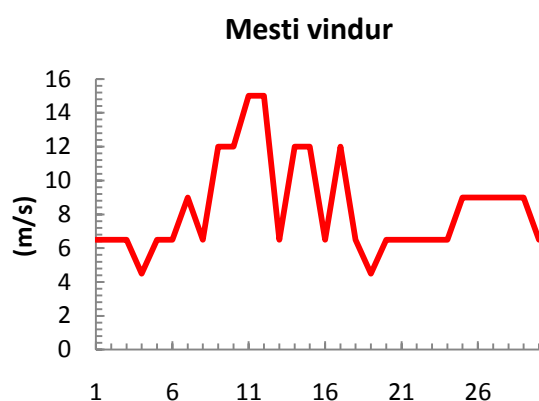
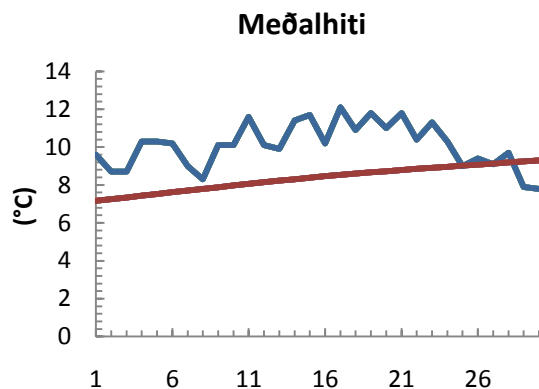


dagur	meðalhiti (°C)	Hámark (°C)	Lágmark (°C)	Úrkoma (mm)	Úrkomutegund	Snjódýpt (cm)	Snjóhula (0-4)	Sólskin (klst)	Meðalvindur (m/s)	Mesti vindur (m/s)	Hviða (m/s)
1	9.6	12.8	7.9	4.7	ri	0	0		3.4	6.5	
2	8.7	14.0	7.2	0.5	ri	0	0		3.8	6.5	
3	8.7	11.5	6.6	0.8	ri	0	0		3.0	6.5	
4	10.3	14.3	7.7			0	0		3.0	4.5	
5	10.3	12.5	8.3			0	0		3.6	6.5	
6	10.2	12.6	8.6			0	0		3.2	6.5	
7	9.0	13.2	6.2	0.4	ri	0	0		5.2	9.0	
8	8.3	10.9	6.1			0	0		4.3	6.5	
9	10.1	13.4	7.1	0.4	ri	0	0		5.9	12.0	
10	10.1	13.9	9.1	2.2	ri	0	0		7.7	12.0	
11	11.6	14.3	9.4	5.8	ri	0	0		8.1	15.0	
12	10.1	15.9	7.6			0	0		2.6	15.0	
13	9.9	12.2	6.9			0	0		2.9	6.5	
14	11.4	14.3	9.6	0.6	ri	0	0		5.1	12.0	
15	11.7	16.9	10.0	0.9	ri	0	0		4.4	12.0	
16	10.2	12.8	8.6	1.7	ri	0	0		2.3	6.5	
17	12.1	16.1	7.5	0.3	ri	0	0		5.6	12.0	
18	10.9	13.9	9.1			0	0		3.7	6.5	
19	11.8	14.2	9.4			0	0		2.1	4.5	
20	11.0	14.5	8.2	0.0		0	0		3.3	6.5	
21	11.8	14.7	8.7			0	0		3.4	6.5	
22	10.4	13.6	8.7			0	0		5.4	6.5	
23	11.3	12.6	9.1	0.0		0	0		4.3	6.5	
24	10.3	12.7	8.9	4.7	ri	0	0		4.3	6.5	
25	9.0	10.9	6.1	0.9	ri	0	0		5.4	9.0	
26	9.4	12.7	4.0			0	0		3.7	9.0	
27	9.1	11.5	6.2			0	0		5.8	9.0	
28	9.7	13.2	8.5			0	0		7.2	9.0	
29	7.9	9.7	6.0			0	0		3.5	9.0	
30	7.8	9.4	6.4	0.8	ri	0	0		4.9	6.5	



Meðalhiti (°C)	10.1
Frávik frá meðaltali 1961 - 1990 (°C)	
Meðalhámarkshiti (°C)	13.2
Meðallágmarkshiti (°C)	7.8
Úrkomumagn (mm)	24.7
Hlutfall úrkomu af meðaltali 1961-1990 (%)	
Meðalvindhraði (m/s)	4.4

