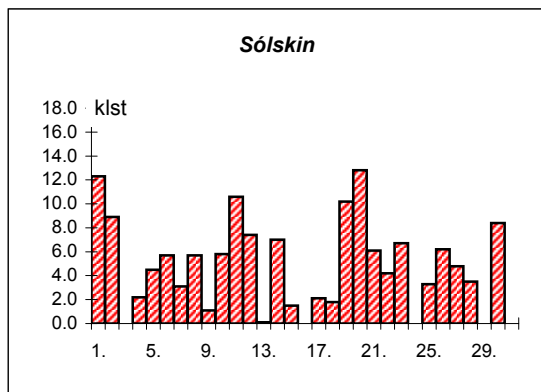
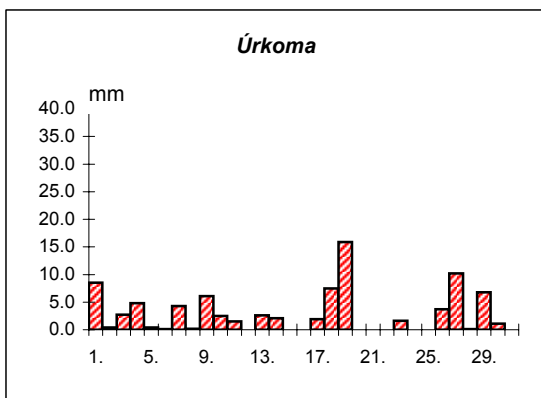
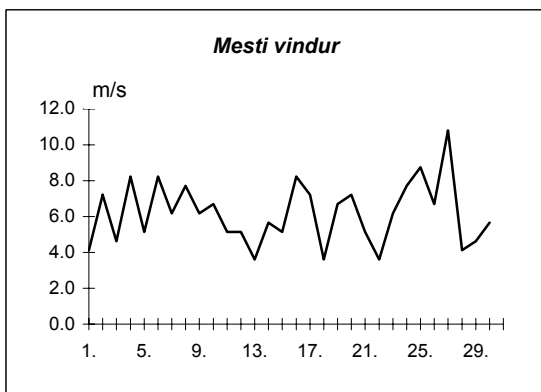
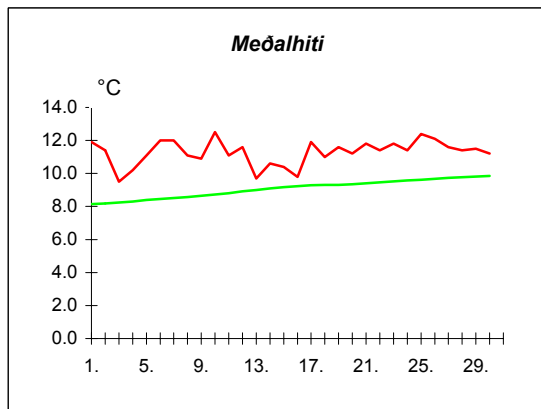
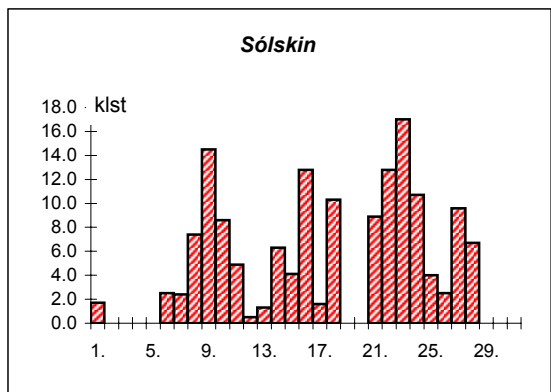
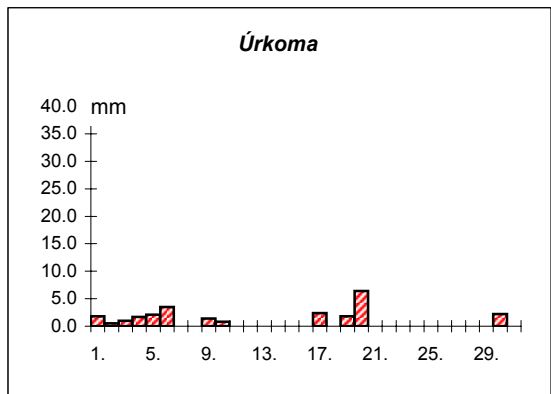
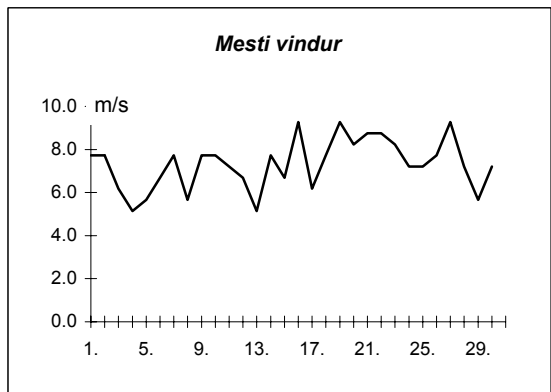
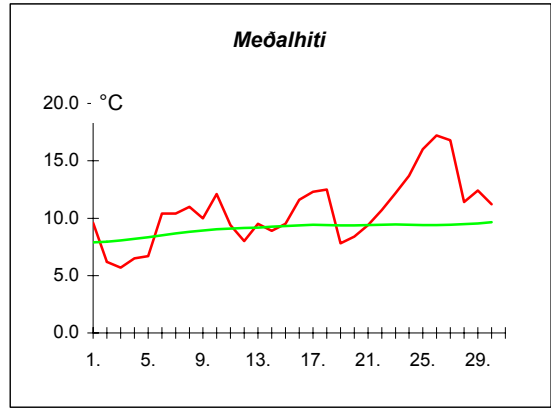


Dags	Meðalhiti (°C)	Hámark (°C)	Lágmark (°C)	Úrkoma (mm)	Úrkomutegund	Snjódýpt (cm)	Snjöhula (0-4)	Sólskin(klst)	Meðalvindur (m/s)	Mesti vindur (m/s)	Hviða (m/s)
1.	11.9	15.0	7.9	8.5	ri		0	12.3	2.2	4.1	6.2
2.	11.4	16.4	7.7	0.4	ri		0	8.9	2.6	7.2	10.8
3.	9.5	11.9	7.1	2.7	ri		0	0.0	2.6	4.6	8.8
4.	10.2	13.7	7.1	4.8	ri		0	2.2	3.0	8.2	12.4
5.	11.1	14.3	7.5	0.4	ri		0	4.5	3.1	5.1	8.8
6.	12.0	15.5	8.8	0.1	ri		0	5.7	3.8	8.2	13.4
7.	12.0	14.1	9.6	4.3	ri		0	3.1	2.6	6.2	9.3
8.	11.1	14.3	8.7	0.2	ri		0	5.7	4.2	7.7	12.4
9.	10.9	14.2	8.8	6.1	ri		0	1.1	3.2	6.2	9.8
10.	12.5	17.2	8.9	2.5	ri		0	5.8	3.3	6.7	11.3
11.	11.1	15.8	9.5	1.5	ri		0	10.6	3.1	5.1	8.2
12.	11.6	15.0	8.9	0.0			0	7.4	2.3	5.1	7.2
13.	9.7	14.5	8.5	2.6	ri		0	0.1	1.5	3.6	5.2
14.	10.6	14.3	8.1	2.1	ri		0	7.0	2.3	5.7	8.2
15.	10.4	13.7	8.5	---			0	1.5	2.4	5.1	7.2
16.	9.8	12.6	7.2	---			0	0.0	5.5	8.2	13.4
17.	11.9	14.4	9.6	1.9	ri		0	2.1	3.3	7.2	10.3
18.	11.0	14.2	9.0	7.5	ri		0	1.8	1.8	3.6	6.2
19.	11.6	14.9	8.7	15.9	ri		0	10.2	3.3	6.7	9.3
20.	11.2	14.0	8.7	---			0	12.8	4.9	7.2	10.8
21.	11.8	15.2	7.9	---			0	6.1	2.0	5.1	7.7
22.	11.4	14.2	10.4	---			0	4.2	2.0	3.6	5.2
23.	11.8	14.6	8.6	1.6	ri		0	6.7	3.3	6.2	8.8
24.	11.4	14.3	9.4	---			0	0.0	5.2	7.7	12.9
25.	12.4	15.4	10.7	0.0			0	3.3	5.2	8.8	13.9
26.	12.1	14.3	11.1	3.7	ri		0	6.2	3.9	6.7	10.3
27.	11.6	14.3	9.1	10.2	ri		0	4.8	4.9	10.8	14.4
28.	11.4	13.7	8.7	0.1	ri		0	3.5	2.0	4.1	6.2
29.	11.5	13.4	11.0	6.8	ri		0	0.0	1.8	4.6	7.2
30.	11.2	12.6	9.2	1.1	ri		0	8.4	3.4	5.7	8.2



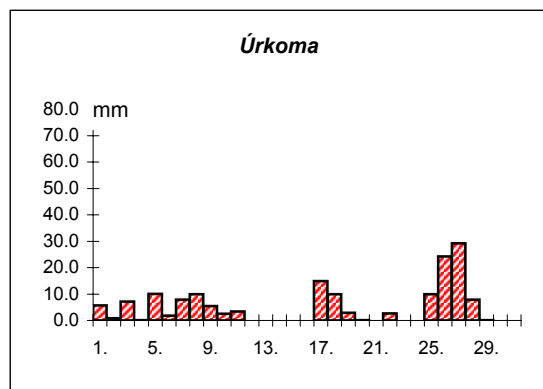
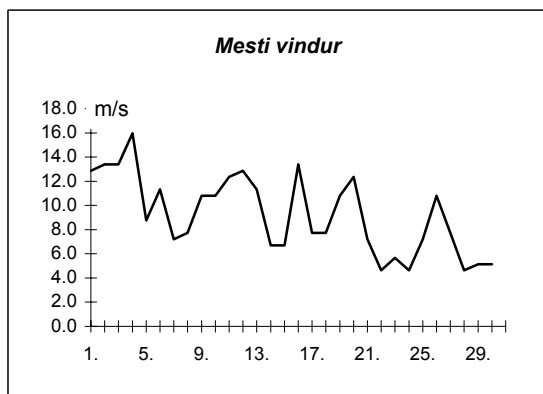
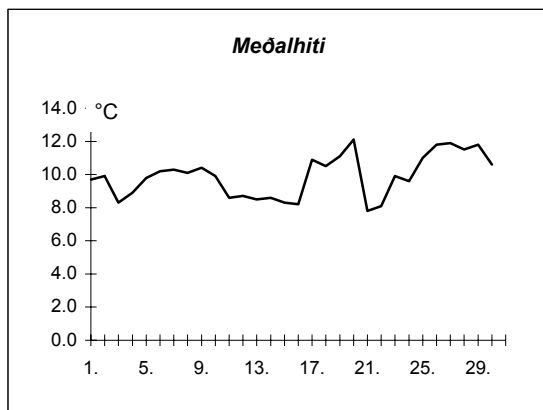
Meðalhiti	=	11.3 °C
Frávik frá meðaltali 1931-60	=	1.8 °C
Meðalhámarkshiti	=	14.4 °C
Meðallágmarkshiti	=	8.8 °C
Úrkomumagn	=	85.0 mm
Hlutfall úrkomu af meðaltali 1931-60	=	207.0 %
Meðalvindhraði	=	3.1 m/s
Sólskinsstundir	=	146.0 klst

Dags	Meðalhiti (°C)	Hámark (°C)	Lágmark (°C)	Úrkoma (mm)	Úrkomutegund	Snjódýpt (cm)	Snjöhula (0-4)	Sólskin(klst)	Meðalvindur (m/s)	Mesti vindur (m/s)	Hviða (m/s)
1.	9.6	12.5	8.0	1.8	ri		0	1.7	4.0	7.7	11.8
2.	6.2	11.2	6.2	0.5	ri		0	0.0	5.5	7.7	11.3
3.	5.7	7.0	4.6	1.0	ri		0	0.0	4.3	6.2	12.9
4.	6.5	8.3	5.4	1.7	ri		0	0.0	3.4	5.1	7.2
5.	6.7	8.6	5.7	2.1	ri		0	0.0	3.0	5.7	7.2
6.	10.4	13.8	5.8	3.5	ri		0	2.5	3.0	6.7	8.8
7.	10.4	14.6	8.7	0.0			0	2.4	4.1	7.7	10.3
8.	11.0	14.6	7.6	0.0			0	7.4	2.9	5.7	7.7
9.	10.0	14.2	6.1	1.4	ri		0	14.5	3.4	7.7	10.3
10.	12.1	15.2	6.8	0.8	ri		0	8.6	3.8	7.7	11.8
11.	9.4	15.2	7.9	0.0			0	4.9	3.7	7.2	13.4
12.	8.0	11.5	6.0	0.0			0	0.5	4.4	6.7	12.4
13.	9.5	12.5	7.0	0.0			0	1.3	2.8	5.1	7.7
14.	8.9	12.0	7.2	0.0			0	6.3	5.6	7.7	11.3
15.	9.5	12.5	7.0	0.0			0	4.1	3.8	6.7	10.3
16.	11.6	16.0	7.3	---			0	12.8	4.9	9.3	14.9
17.	12.3	17.0	7.8	2.4	ri		0	1.6	3.3	6.2	9.8
18.	12.5	16.0	9.5	0.0			0	10.3	4.3	7.7	11.8
19.	7.8	13.6	7.5	1.8	ri		0	0.0	6.6	9.3	16.0
20.	8.4	10.5	6.0	6.4	ri		0	0.0	5.9	8.2	12.4
21.	9.4	11.7	7.8	---			0	8.9	4.2	8.8	11.3
22.	10.7	15.2	3.5	---			0	12.8	4.3	8.8	11.3
23.	12.2	15.2	7.5	---			0	17.0	4.3	8.2	12.4
24.	13.7	18.0	7.5	---			0	10.7	3.9	7.2	10.8
25.	16.0	21.2	11.8	---			0	4.0	4.2	7.2	10.3
26.	17.2	22.0	13.2	---			0	2.5	4.2	7.7	13.4
27.	16.8	22.0	14.0	0.0			0	9.6	5.6	9.3	16.5
28.	11.4	21.5	9.0	---			0	6.7	3.9	7.2	10.3
29.	12.4	15.5	9.5	---			0	0.0	2.9	5.7	7.7
30.	11.2	15.4	11.0	2.2	ri		0	0.0	4.6	7.2	9.3



Meðalhiti	=	10.6 °C
Frávik frá meðaltali 1931-60	=	1.3 °C
Meðalhámarkshiti	=	14.5 °C
Meðallágmarkshiti	=	7.8 °C
Úrkomumagn	=	25.6 mm
Hlutfall úrkomu af meðaltali 1931-60	=	116.0 %
Meðalvindhraði	=	4.2 m/s
Sólskinsstundir	=	151.1 klst

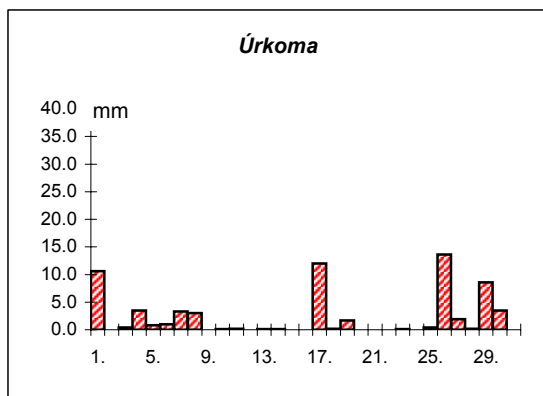
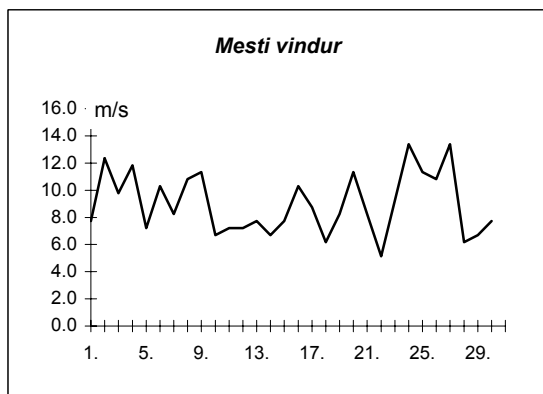
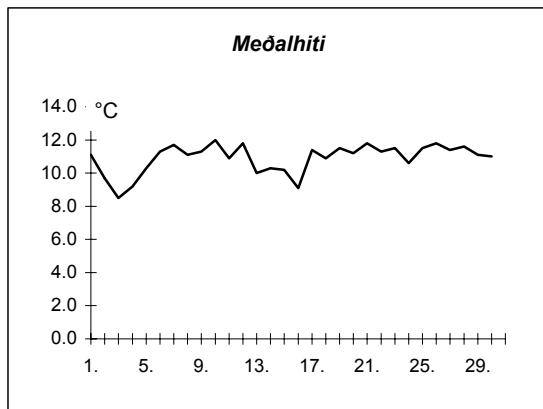
Dags	Meðalhiti (°C)	Hámark (°C)	Lágmark (°C)	Úrkoma (mm)	Úrkomutegund	Snjódýpt (cm)	Snjöhula (0-4)	Sólskin(klst)	Meðalvindur (m/s)	Mesti vindur (m/s)	Hviða (m/s)
1.	9.7	11.5	8.5	5.7	ri		0		6.4	12.9	
2.	9.9	13.1	6.2	0.9	ri		0		7.9	13.4	
3.	8.3	11.5	7.2	7.2	ri		0		2.8	13.4	
4.	8.9	11.7	5.3	0.1	ri		0		8.2	16.0	
5.	9.8	13.6	7.0	10.1	ri		0		3.7	8.8	
6.	10.2	12.0	9.0	1.8	ri		0		4.4	11.3	
7.	10.3	12.7	8.7	7.9	ri		0		4.4	7.2	
8.	10.1	12.3	8.8	9.9	ri		0		4.2	7.7	
9.	10.4	12.3	9.2	5.4	ri		0		5.1	10.8	
10.	9.9	11.9	9.6	2.5	ri		0		7.1	10.8	
11.	8.6	10.7	8.2	3.4	ri		0		7.5	12.4	
12.	8.7	10.5	7.4	0.0			0		8.8	12.9	
13.	8.5	10.5	8.0	0.0			0		4.9	11.3	
14.	8.6	12.3	5.3	0.0			0		3.1	6.7	
15.	8.3	12.2	4.9	0.0			0		3.3	6.7	
16.	8.2	9.5	5.3	---			0		7.1	13.4	
17.	10.9	13.4	8.4	14.9	ri		0		5.2	7.7	
18.	10.5	13.0	8.3	9.9	ri		0		4.2	7.7	
19.	11.1	15.5	7.9	2.9	ri		0		6.2	10.8	
20.	12.1	16.0	9.9	0.1	ri		0		6.5	12.4	
21.	7.8	16.0	7.8	---			0		2.9	7.2	
22.	8.1	11.7	5.9	2.7	ri		0		2.8	4.6	
23.	9.9	12.7	7.2	0.0			0		3.1	5.7	
24.	9.6	12.3	4.9	---			0		2.5	4.6	
25.	11.0	12.5	9.5	10.0	ri		0		3.5	7.2	
26.	11.8	12.1	10.9	24.3	ri		0		6.4	10.8	
27.	11.9	13.5	11.7	29.2	ri		0		3.8	7.7	
28.	11.5	13.7	10.3	7.9	sl		0		2.4	4.6	
29.	11.8	14.1	10.2	0.1	ri		0		2.0	5.1	
30.	10.6	13.9	9.5	---			0		3.3	5.1	



Meðalhiti	=	9.9 °C
Meðalhámarkshiti	=	12.6 °C
Meðallágmarkshiti	=	8.0 °C
Úrkomumagn	=	156.9 mm
Meðalvindhraði	=	4.8 m/s

Útgefandi : **Veðurstofa Íslands**
 Heimilisfang : **Bústaðavegur 9**
150 Reykjavík

Dags	Meðalhiti (°C)	Hámark (°C)	Lágmark (°C)	Úrkoma (mm)	Úrkomutegund	Snjódýpt (cm)	Snjöhula (0-4)	Sólskin(klist)	Meðalvindur (m/s)	Mesti vindur (m/s)	Hviða (m/s)
1.	11.1	14.3	8.2	10.6	ri		0		5.0	7.7	10.3
2.	9.7	15.0	8.2	0.0			0		8.8	12.4	15.4
3.	8.5	10.6	7.0	0.4	ri		0		4.7	9.8	13.4
4.	9.2	10.8	7.6	3.5	ri		0		6.1	11.8	14.9
5.	10.3	13.2	7.3	0.8	ri		0		4.3	7.2	8.8
6.	11.3	14.7	8.6	1.0	ri		0		5.4	10.3	13.4
7.	11.7	14.5	9.7	3.3	ri		0		3.6	8.2	11.3
8.	11.1	14.6	9.0	3.0	ri		0		6.9	10.8	15.4
9.	11.3	13.9	8.5	---			0		6.2	11.3	15.4
10.	12.0	15.5	9.3	0.1	ri		0		3.8	6.7	9.3
11.	10.9	14.4	9.2	0.2	ri		0		3.6	7.2	9.3
12.	11.8	15.0	8.5	---			0		3.2	7.2	10.8
13.	10.0	14.9	9.0	0.1	ri		0		4.3	7.7	9.8
14.	10.3	13.0	8.0	0.1	ri		0		3.0	6.7	8.8
15.	10.2	13.4	8.1	---			0		4.2	7.7	10.3
16.	9.1	11.6	7.0	---			0		6.4	10.3	13.9
17.	11.4	13.6	9.1	12.0	ri		0		5.3	8.8	11.8
18.	10.9	14.6	8.3	0.2	ri		0		2.8	6.2	8.8
19.	11.5	14.6	9.1	1.7	ri		0		4.6	8.2	10.8
20.	11.2	15.2	9.5	---			0		7.5	11.3	14.4
21.	11.8	14.2	8.8	---			0		3.7	8.2	10.3
22.	11.3	14.1	10.2	---			0		2.2	5.1	6.7
23.	11.5	14.6	9.0	0.1	ri		0		4.9	9.3	13.4
24.	10.6	14.6	9.5	0.0			0		8.8	13.4	18.0
25.	11.5	14.3	10.1	0.4	ri		0		6.7	11.3	15.4
26.	11.8	13.6	9.6	13.6	ri		0		5.7	10.8	14.9
27.	11.4	13.5	8.5	1.9	ri		0		7.0	13.4	17.5
28.	11.6	14.7	9.1	0.2	ri		0		3.3	6.2	8.8
29.	11.1	13.6	10.6	8.6	ri		0		3.9	6.7	7.7
30.	11.0	13.2	9.1	3.5	ri		0		4.9	7.7	10.3



Meðalhiti	=	10.9 °C
Frávik frá meðaltali 1931-60	=	1.7 °C
Meðalhámarkshiti	=	13.9 °C
Meðallágmarkshiti	=	8.8 °C
Úrkomumagn	=	65.3 mm
Hlutfall úrkomu af meðaltali 1931-60	=	121.0 %
Meðalvindhraði	=	5.0 m/s