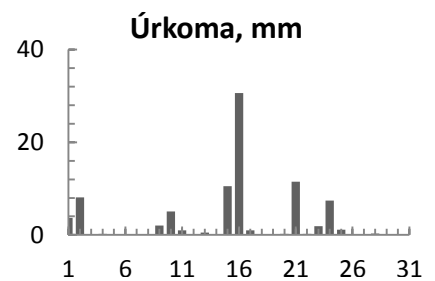
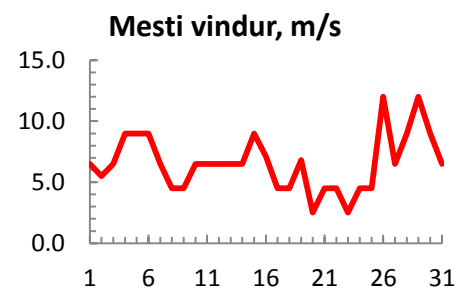
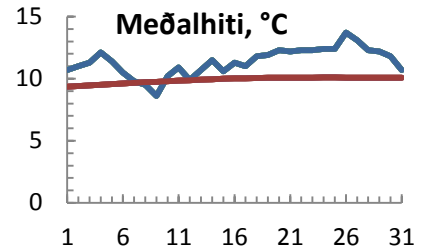


dagur	meðalhiti (°C)	Hámark (°C)	Lágmark (°C)	Úrkoma (mm)	Úrkomutegund	Snjódýpt (cm)	Snjóhula (0-4)	Sólskin (klst)	Meðalvindur (m/s)	Mesti vindur (m/s)	Hviða (m/s)
1	10.7	11.8	9.2	3.7	ri	0	0		4.2	6.5	
2	11.0	12.6	8.9	8.1	ri	0	0		3.9	5.5	
3	11.3	14.2	9.5			0	0		3.9	6.5	
4	12.1	14.5	9.7	0.2	ri	0	0		4.6	9.0	
5	11.4	13.4	8.9			0	0		4.0	9.0	
6	10.5	13.5	6.7			0	0		5.1	9.0	
7	9.8	14.4	5.4			0	0		2.8	6.5	
8	9.5	13.5	7.5			0	0		2.8	4.5	
9	8.6	11.0	7.1	2.0	ri	0	0		3.6	4.5	
10	10.2	12.0	8.0	5.1	ri	0	0		3.1	6.5	
11	10.9	12.8	8.9	1.0	ri	0	0		4.6	6.5	
12	9.9	12.4	8.4			0	0		2.4	6.5	
13	10.7	13.6	6.1	0.5	ri	0	0		3.5	6.5	
14	11.5	13.5	9.7			0	0		3.2	6.5	
15	10.6	13.5	9.7	10.5	ri	0	0		7.1	9.0	
16	11.3	14.5	9.7	30.6	ri	0	0		2.8	7.1	
17	11.0	12.5	9.0	1.0	ri	0	0		2.2	4.5	
18	11.8	15.0	9.4			0	0		2.9	4.5	
19	11.9	14.5	8.9			0	0		3.7	6.8	
20	12.3	14.5	10.4	0.2	ri	0	0		1.2	2.5	
21	12.2	14.5	10.9	11.5	ri	0	0		2.4	4.5	
22	12.3	16.5	9.5	0.2	ri	0	0		3.0	4.5	
23	12.3	15.0	10.5	1.9	ri	0	0		1.0	2.5	
24	12.4	14.5	10.4	7.4	ri	0	0		3.0	4.5	
25	12.4	15.2	10.9	1.1	ri	0	0		3.0	4.5	
26	13.7	17.4	10.0			0	0		7.0	12.0	
27	13.1	16.4	11.2	0.1	ri	0	0		3.9	6.5	
28	12.3	14.8	10.0	0.3	ri	0	0		6.9	9.0	
29	12.2	14.6	10.7			0	0		6.1	12.0	
30	11.8	15.4	7.9			0	0		5.8	9.0	
31	10.7	14.0	8.4			0	0		4.1	6.5	



Meðalhiti (°C)	11.4
Frávik frá meðaltali 1961 - 1990 (°C)	0.9
Meðalhámarkshiti (°C)	14.1
Meðallágmarkshiti (°C)	9.1
Úrkomumagn (mm)	85.4
Hlutfall úrkomu af meðaltali 1961-1990 (%)	122.9
Meðalvindhraði (m/s)	3.8