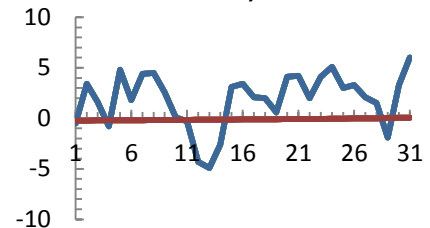
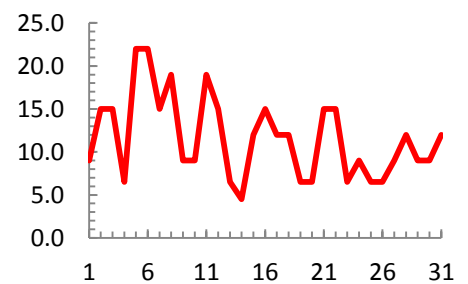


dagur	meðalhiti (°C)	Hámark (°C)	Lágmark (°C)	Úrkoma (mm)	Úrkomutegund	Snjóþýpt (cm)	Snjóhula (0-4)	Sólskin (klst)	Meðalvindur (m/s)	Mesti vindur (m/s)	Hviða (m/s)
1	-0.5	1.8	-2.0			0	0		1.2	9.0	
2	3.4	10.4	-2.7			0	0		8.1	15.0	
3	1.6	10.6	-1.0			0	0		8.5	15.0	
4	-0.8	0.5	-3.0			0	0		2.1	6.5	
5	4.8	7.0	-1.6	4.4	sl	0	0		14.9	22.0	
6	1.8	4.4	0.0	10.9	ri	0	0		5.8	22.0	
7	4.4	6.5	-0.2	1.1	ri	0	0		7.7	15.0	
8	4.5	6.0	3.3	0.7	ri	0	0		8.1	19.0	
9	2.6	5.5	1.1	27.4	ri	0	0		5.6	9.0	
10	0.1	2.2	-1.6	0.2	sn	1	4		4.3	9.0	
11	-0.3	1.0	-1.4	0.1	sn	0	0		13.4	19.0	
12	-4.3	0.4	-6.2			0	0		9.9	15.0	
13	-4.9	-3.4	-6.0			0	0		5.5	6.5	
14	-2.6	-1.4	-6.2			0	0		3.5	4.5	
15	3.1	5.6	-1.8	2.7	sl	3	4		4.1	12.0	
16	3.4	6.8	2.3	6.9	ri	0	0		13.1	15.0	
17	2.1	3.4	-0.4	0.2	ri	0	0		5.2	12.0	
18	2.0	3.8	-0.8	2.9	sn	4	4		5.8	12.0	
19	0.6	2.8	-0.8	0.3	ri	0	0		2.6	6.5	
20	4.1	6.2	-0.6	4.4	sl	2	4		3.2	6.5	
21	4.2	6.2	2.2	13.0	ri	0	0		5.9	15.0	
22	2.0	5.2	0.2	3.5	ri	0	0		2.1	15.0	
23	4.1	6.4	0.2	1.5	ri	0	0		2.9	6.5	
24	5.1	6.6	4.4	25.8	ri	0	0		6.1	9.0	
25	3.0	5.0	0.8	2.3	ri	0	0		2.4	6.5	
26	3.3	6.0	2.8	2.3	ri	0	0		2.8	6.5	
27	2.1	4.0	-1.6	0.3	ri	0	0		4.7	9.0	
28	1.5	3.4	0.6	6.5	sl	0	2		8.9	12.0	
29	-1.9	1.8	-3.4			0	0		4.4	9.0	
30	3.3	5.6	-2.0	0.1	sl	0	0		5.9	9.0	
31	6.0	7.2	5.4	45.3	ri	0	0		6.1	12.0	

Meðalhiti (°C)	1.9
Frávik frá meðaltali 1961 - 1990 (°C)	1.8
Meðalhámarkshiti (°C)	4.4
Meðallágmarkshiti (°C)	-0.7
Úrkomumagn (mm)	162.8
Hlutfall úrkomu af meðaltali 1961-1990 (%)	123.9
Meðalvindhraði (m/s)	6.0

Meðalhiti, °C

Mesti vindur, m/s

Úrkoma, mm
