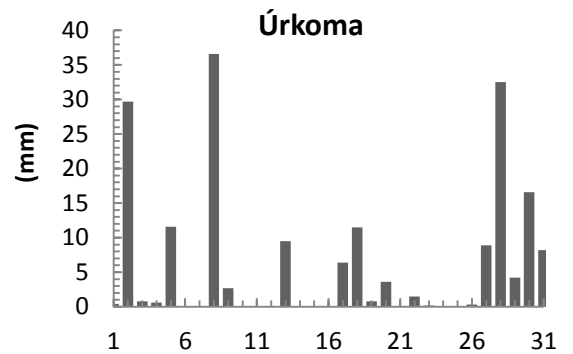
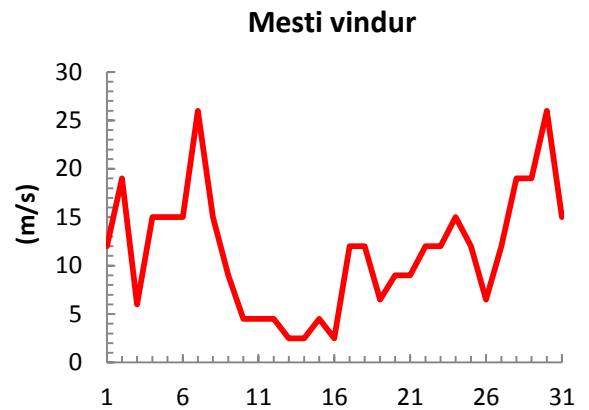
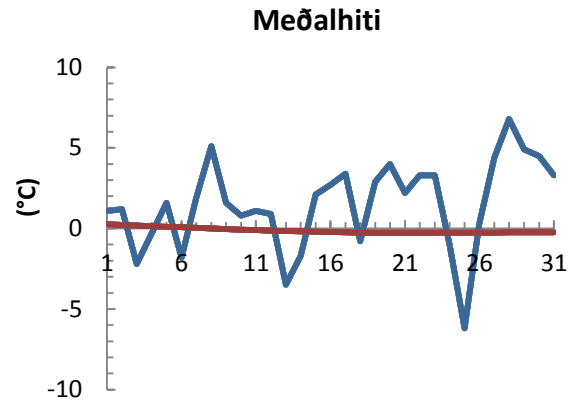


dagur	meðalhiti (°C)	Hámark (°C)	Lágmark (°C)	Úrkoma (mm)	Úrkomutegund	Snjódýpt (cm)	Snjöhula (0-4)	Sólskin (klst)	Meðalvindur (m/s)	Mesti vindur (m/s)	Hviða (m/s)
1	1.1	3.0	-1.8	0.4	sn	4	4		7.0	12.0	
2	1.2	4.4	-2.2	29.7	sl	0	0		8.6	19.0	
3	-2.2	1.6	-5.0	0.8	sl	3	4		1.5	6.0	
4	-0.3	2.0	-3.4	0.6	sn	3	4		5.6	15.0	
5	1.6	3.6	-1.0	11.6	sl	8	4		8.6	15.0	
6	-1.8	2.8	-3.8	0.0		7	4		8.2	15.0	
7	1.9	4.0	-5.5	0.0		7	4		8.4	26.0	
8	5.1	7.4	-0.6	36.6	sl	0	0		11.6	15.0	
9	1.6	4.5	-1.5	2.7	ri	0	0		3.9	9.0	
10	0.8	2.8	-0.6	0.1	ri	0	0		4.0	4.5	
11	1.1	3.4	-0.1	0.0		0	0		3.3	4.5	
12	0.9	1.8	-1.3	0.0		0	0		2.6	4.5	
13	-3.5	2.4	-5.2	9.5	sn	7	4		1.3	2.5	
14	-1.7	1.0	-6.5	0.0		0	2		1.4	2.5	
15	2.1	4.5	1.0	0.0		0	2		1.6	4.5	
16	2.7	4.0	-0.2	0.0		0	2		1.7	2.5	
17	3.4	5.0	2.4	6.4	ri	0	0		6.6	12.0	
18	-0.8	3.8	-1.5	11.5	ri	0	0		6.8	12.0	
19	2.9	4.8	-1.5	0.8	sn	2	4		4.4	6.5	
20	4.0	5.6	3.4	3.6	sl	0	0		8.4	9.0	
21	2.2	3.8	1.1	0.1	sn	0	0		3.4	9.0	
22	3.3	4.5	1.5	1.5	sl	0	0		6.3	12.0	
23	3.3	5.2	2.9	0.2	ri	0	0		6.6	12.0	
24	-1.0	3.4	-2.3	0.0		0	0		11.7	15.0	
25	-6.2	-1.6	-7.5	0.0		0	0		5.5	12.0	
26	0.3	3.8	-7.5	0.3	sn	2	4		3.8	6.5	
27	4.4	5.2	1.6	8.9	sl	0	0		6.6	12.0	
28	6.8	8.4	4.7	32.5	ri	0	0		15.5	19.0	
29	4.9	8.4	2.1	4.2	ri	0	0		8.9	19.0	
30	4.5	7.0	2.5	16.6	ri	0	0		17.3	26.0	
31	3.3	5.6	0.5	8.2	ri	0	0		6.2	15.0	



Meðalhiti (°C)	1.5
Frávik frá meðaltali 1961 - 1990 (°C)	1.1
Meðalhámarkshiti (°C)	4.1
Meðallágmarkshiti (°C)	-1.1
Úrkomumagn (mm)	186.8
Hlutfall úrkomu af meðaltali 1961-1990 (%)	157.9
Meðalvindhraði (m/s)	6.4