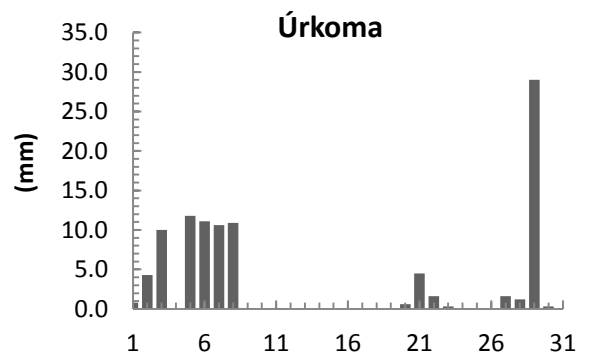
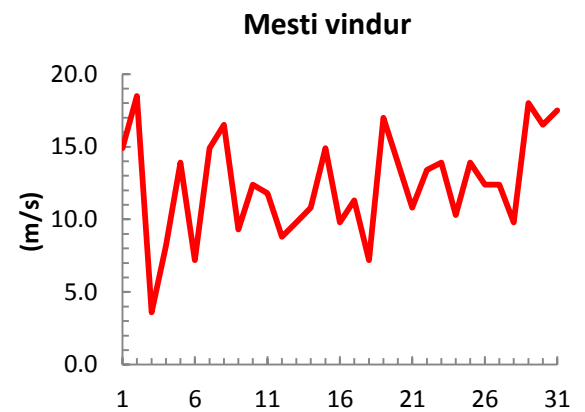
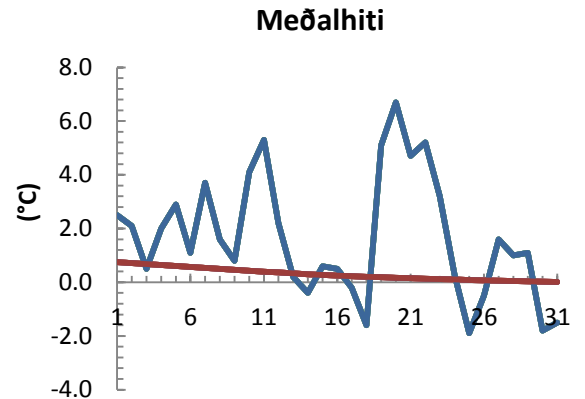


dagur	meðalhiti (°C)	Hámark (°C)	Lágmark (°C)	Úrkoma (mm)	Úrkomutegund	Snjódýpt (cm)	Snjóhula (0-4)	Sólskin (klst)	Meðalvindur (m/s)	Mesti vindur (m/s)	Hviða (m/s)
1	2.5	2.8	-0.1	0.8	ri	0	0		10.0	14.9	21.1
2	2.1	4.6	0.6	4.3	ri	0	0		7.1	18.5	24.7
3	0.5	2.2	-0.6	10.0	sl	0	2		2.0	3.6	4.1
4	2.0	3.1	-0.9			0	2		4.8	8.2	11.3
5	2.9	4.7	2.1	11.8	ri	0	0		7.9	13.9	22.1
6	1.1	2.6	-0.9	11.1	sl	0	0		3.7	7.2	10.3
7	3.7	5.7	0.5	10.6	ri	0	0		8.6	14.9	20.6
8	1.6	4.8	1.0	10.9	sl	0	0		7.6	16.5	21.6
9	0.8	2.5	-1.8	0.1	sl	0	0		5.5	9.3	11.8
10	4.1	5.0	0.9			0	0		9.2	12.4	16.5
11	5.3	6.8	4.6	0.1	ri	0	0		9.5	11.8	16.0
12	2.2	5.5	1.3			0	0		6.4	8.8	11.8
13	0.2	2.4	-0.4			0	0		7.1	9.8	12.4
14	-0.4	1.8	-1.5			0	0		7.4	10.8	14.9
15	0.6	2.5	-2.6			0	0		9.0	14.9	19.0
16	0.5	2.5	-0.3	0.0		0	0		7.0	9.8	12.4
17	-0.2	1.2	-2.3			0	0		7.4	11.3	14.9
18	-1.6	0.2	-4.0			0	0		3.3	7.2	9.3
19	5.1	6.9	-3.8			0	0		11.1	17.0	21.6
20	6.7	8.2	5.4	0.6	ri	0	0		9.1	13.9	18.0
21	4.7	6.8	4.2	4.5	ri	0	0		5.9	10.8	13.4
22	5.2	6.2	3.7	1.6	ri	0	0		8.7	13.4	17.5
23	3.2	6.4	2.2	0.3	ri	0	0		7.9	13.9	17.5
24	0.3	2.2	-0.7	0.0		0	0		6.8	10.3	13.9
25	-1.9	1.6	-3.0			0	0		9.2	13.9	17.0
26	-0.5	0.3	-3.3			0	0		9.8	12.4	17.0
27	1.6	2.7	-0.5	1.6	sn	0	2		9.4	12.4	17.0
28	1.0	3.2	0.1	1.2	sl	0	0		3.3	9.8	15.4
29	1.1	2.3	-0.7	29.0	sl	12	4		11.9	18.0	24.2
30	-1.8	0.7	-3.3	0.3	sl	13	4		13.9	16.5	22.1
31	-1.5	-0.5	-2.8	0.0		9	4		13.2	17.5	20.6



Meðalhiti (°C)	1.7
Frávik frá meðaltali 1961 - 1990 (°C)	1.4
Meðalhámarkshiti (°C)	3.5
Meðallágmarkshiti (°C)	-0.2
Úrkomumagn (mm)	98.8
Hlutfall úrkomu af meðaltali 1961-1990 (%)	90.8
Meðalvindhraði (m/s)	7.9

