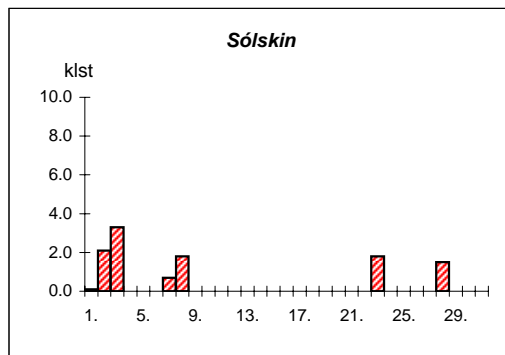
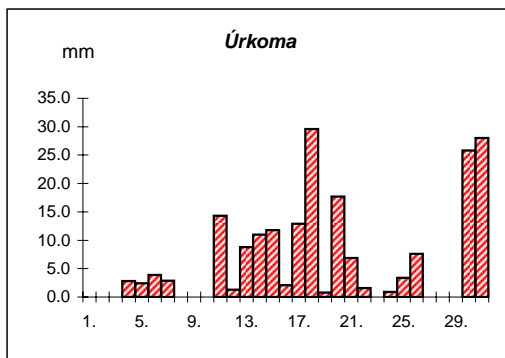
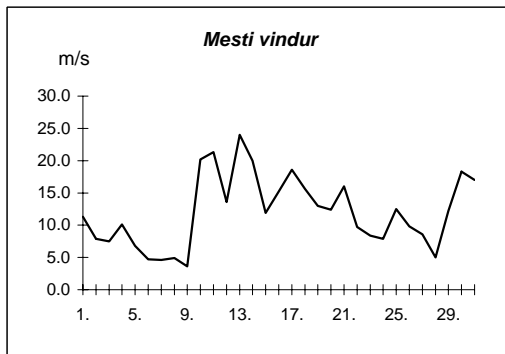
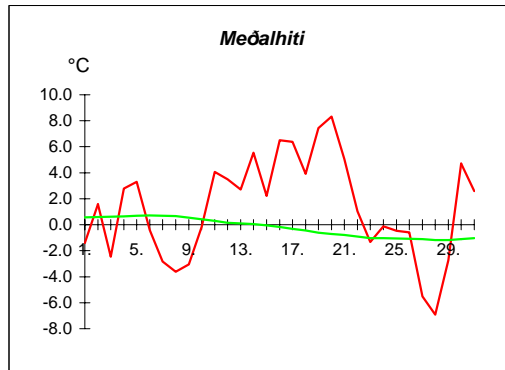


Reykjavík desember 2007

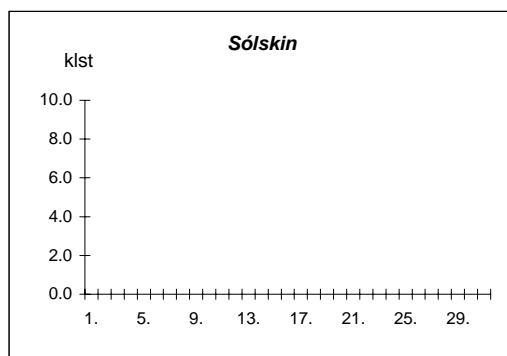
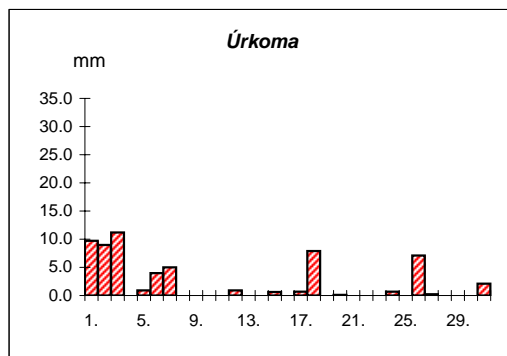
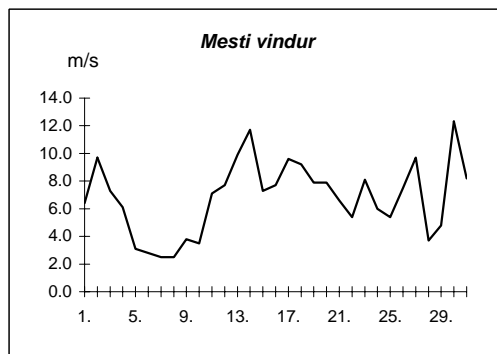
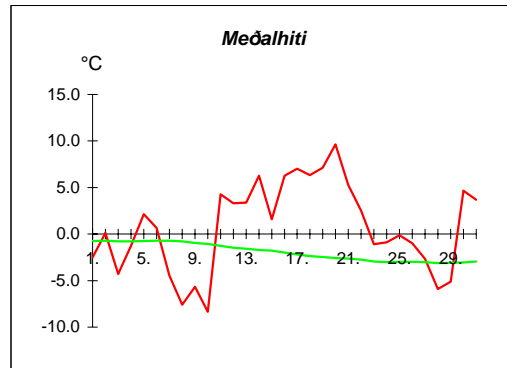
Dags	Meðalhiti (°C)	Hámark (°C)	Lágmark (°C)	Úrkoma (mm)	Úrkomutegund	Snjódýpt (cm)	Snjöhula (0-4)	Sólskin(klst)	Meðalvindur (m/s)	Mesti vindur (m/s)	Hviða (m/s)
1.	-1.4	2.7	-3.4	0.0	sn			0.1	3.0	11.3	20.0
2.	1.6	3.9	-4.6					2.1	4.0	7.9	14.1
3.	-2.5	3.4	-5.4					3.3	3.3	7.5	11.8
4.	2.8	4.7	-5.5	2.8	sl			0.0	6.5	10.1	18.4
5.	3.3	5.0	3.0	2.4	ri			0.0	2.8	6.8	10.3
6.	-0.4	3.6	-1.6	3.9	sn		2	0.0	1.1	4.7	6.7
7.	-2.8	-0.6	-4.5	2.9	sn	6	4	0.7	2.7	4.6	6.4
8.	-3.6	-2.2	-4.1			6	4	1.8	1.9	4.9	7.5
9.	-3.1	-1.5	-5.6			4	4	0.0	2.1	3.6	5.8
10.	-0.2	2.3	-4.3			5	4	0.0	7.2	20.2	29.9
11.	4.1	6.2	2.2	14.3	ri			0.0	4.3	21.3	33.3
12.	3.5	5.2	1.2	1.3	ri			0.0	6.5	13.6	23.6
13.	2.7	7.5	0.7	8.8	sl			0.0	8.1	24.0	37.2
14.	5.6	9.0	-3.6	11.0	ri			0.0	13.8	20.0	31.2
15.	2.2	5.5	0.6	11.8	sl			0.0	5.9	11.9	18.2
16.	6.5	8.7	1.2	2.1	ri			0.0	8.7	15.2	24.4
17.	6.4	9.7	2.4	12.9	ri			0.0	8.3	18.6	28.4
18.	3.9	10.1	2.3	29.6	ri			0.0	5.1	15.6	24.0
19.	7.5	9.5	2.4	0.8	ri			0.0	8.5	13.0	18.4
20.	8.3	9.5	7.4	17.7	ri			0.0	8.1	12.4	19.1
21.	5.1	8.4	3.6	6.9	ri			0.0	5.7	16.0	25.5
22.	1.0	5.5	0.4	1.6	sl			0.0	4.1	9.7	16.4
23.	-1.3	1.4	-4.2	0.0	sl	1	4	1.8	4.1	8.4	12.9
24.	-0.1	2.1	-4.4	0.9	sl	4	4	0.0	4.1	7.9	13.2
25.	-0.5	2.3	-1.5	3.4	sn	4	4	0.0	6.5	12.5	18.1
26.	-0.6	1.1	-2.1	7.6	sn	12	4	0.0	3.5	9.8	13.6
27.	-5.5	-0.7	-6.5	0.0	sn	12	4	0.0	4.6	8.6	13.8
28.	-6.9	-4.5	-9.7			11	4	1.5	2.5	5.0	8.6
29.	-2.7	0.2	-6.2			11	4	0.0	6.1	12.2	18.9
30.	4.7	8.1	-0.8	25.8	ri		2	0.0	13.9	18.3	30.1
31.	2.6	7.8	-0.9	28.0	sl		2	0.0	10.1	17.0	29.5



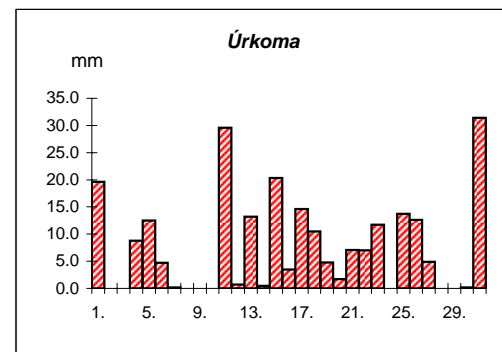
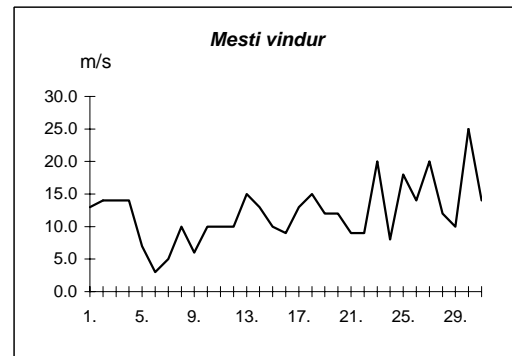
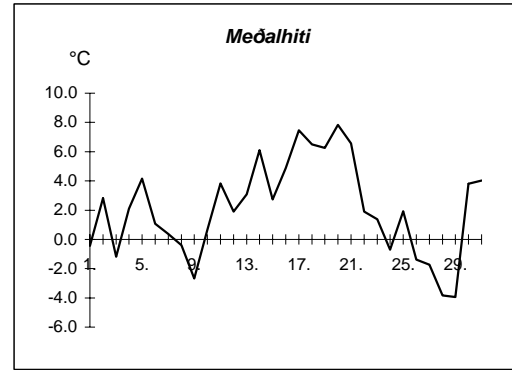
Meðalhiti	=	1.3 °C
Frávik frá meðaltali 1961-90	=	1.5 °C
Meðalhámarkshiti	=	4.3 °C
Meðallágmarkshiti	=	-1.7 °C
Úrkomumagn	=	196.5 mm
Hlutfall úrkomu af meðaltali 1961-90	=	248.7 %
Meðalvindhraði	=	5.7 m/s
Sólskinsstundir	=	11.3 klst

Dags	Meðalhiti (°C)	Hámark (°C)	Lágmark (°C)	Úrkoma (mm)	Úrkomutegund	Snjódýpt (cm)	Snjöhula (0-4)	Sólskin(klst)	Meðalvindur (m/s)	Mesti vindur (m/s)	Hviða (m/s)
1.	-2.5	1.0	-3.3	9.7	sn	19	4	0.0	2.0	6.4	10.3
2.	0.1	1.5	-4.5	9.0	sl	17	4	0.0	6.0	9.7	15.7
3.	-4.3	1.1	-6.2	11.2	sn	12	4	0.0	3.6	7.3	11.0
4.	-1.2	2.0	-10.0	0.0		12	4	0.0	2.7	6.1	12.8
5.	2.1	3.5	1.0	0.9	sl	11	4	0.0	1.8	3.1	5.1
6.	0.7	3.8	0.2	4.0	sl	9	4	0.0	1.2	2.8	4.1
7.	-4.5	0.5	-7.0	5.0	sn	13	4	0.0	0.5	2.5	3.8
8.	-7.6	-2.4	-11.0			13	4	0.0	1.4	2.5	4.2
9.	-5.7	-2.8	-8.5			13	4	0.0	1.8	3.8	6.2
10.	-8.3	-7.3	-11.3			13	4	0.0	1.2	3.5	6.2
11.	4.3	7.5	-9.0			10	4	0.0	2.5	7.1	14.2
12.	3.3	4.2	2.1	0.9	ri	8	4	0.0	3.2	7.7	14.6
13.	3.4	7.9	0.2			6	4	0.0	4.7	9.9	18.7
14.	6.3	10.4	0.0			5	4	0.0	6.4	11.7	21.6
15.	1.6	8.0	-0.2	0.6	ri			0.0	3.6	7.3	13.5
16.	6.3	8.0	-0.2					0.0	3.5	7.7	17.4
17.	7.0	10.9	1.8	0.7	ri			0.0	3.9	9.6	17.8
18.	6.4	11.9	3.9	7.9	ri			0.0	5.1	9.2	18.1
19.	7.1	10.8	2.2					0.0	3.9	7.9	14.8
20.	9.6	12.6	8.6	0.1	ri			0.0	5.5	7.9	15.9
21.	5.3	9.9	4.0					0.0	2.4	6.6	11.1
22.	2.5	6.6	2.1					0.0	3.7	5.4	12.2
23.	-1.1	3.8	-3.0	0.0	sn			0.0	3.0	8.1	11.9
24.	-0.9	2.6	-6.2	0.7	sn	3	4	0.0	3.1	6.0	10.3
25.	-0.1	3.3	-1.6				2	0.0	2.4	5.4	9.7
26.	-1.0	2.8	-1.4	7.1	sn	12	4	0.0	4.2	7.5	14.2
27.	-2.7	1.5	-4.2	0.2	sn	12	4	0.0	5.3	9.7	15.5
28.	-5.9	-3.8	-7.8	0.0	sn	12	4	0.0	0.9	3.7	6.1
29.	-5.1	-3.5	-7.0	0.0	sn	11	4	0.0	2.3	4.8	8.2
30.	4.7	8.8	-7.8			10	4	0.0	6.0	12.3	22.4
31.	3.7	9.0	1.4	2.1	ri		2	0.0	5.4	8.2	16.9

Meðalhiti	=	0.8 °C
Frávik frá meðaltali 1961-90	=	2.7 °C
Meðalhámarkshiti	=	4.3 °C
Meðallágmarkshiti	=	-2.7 °C
Úrkomumagn	=	60.1 mm
Hlutfall úrkomu af meðaltali 1961-90	=	113.4 %
Meðalvindhraði	=	3.3 m/s
Sólskinsstundir	=	0.0 klst



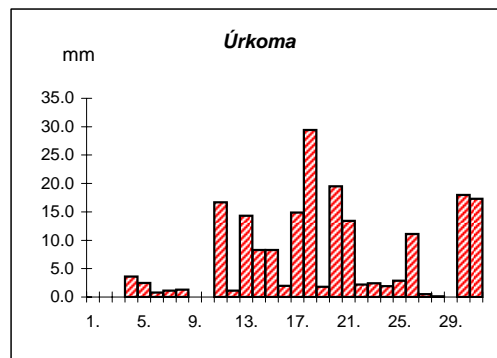
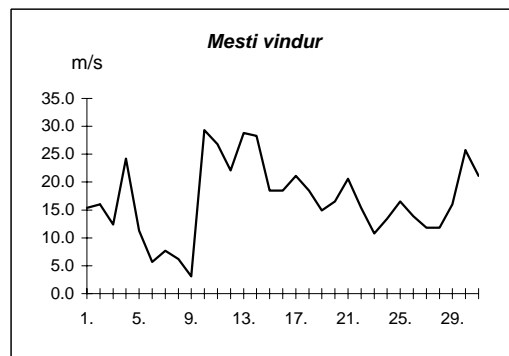
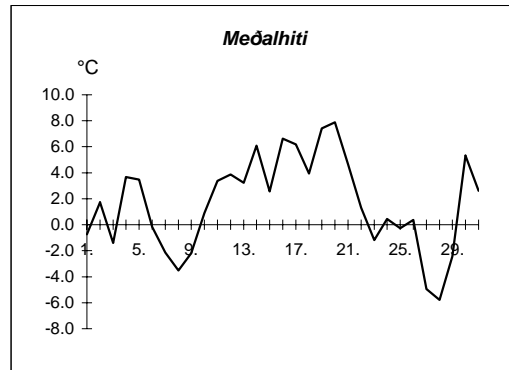
Dags	Meðalhiti (°C)	Hámark (°C)	Lágmark (°C)	Úrkoma (mm)	Úrkomutegund	Snjódýpt (cm)	Snjöhula (0-4)	Sólskin(kst)	Meðalvindur (m/s)	Mesti vindur (m/s)
1.	-0.4	3.6	-2.1	19.6	sl				10.3	13.0
2.	2.8	4.7	-2.1						11.5	14.0
3.	-1.2	4.0	-3.2						9.0	14.0
4.	2.1	3.2	-4.1	8.8	sl	4	4		9.3	14.0
5.	4.2	6.3	2.7	12.5	ri				3.3	7.0
6.	1.1	4.6	0.1	4.7	ri				2.1	3.0
7.	0.4	1.8	-0.5	0.2	ri				3.0	5.0
8.	-0.4	1.0	-0.9						5.3	10.0
9.	-2.7	-0.1	-4.5						4.0	6.0
10.	0.7	0.7	-2.6	0.0	sn				5.5	10.0
11.	3.8	6.9	0.0	29.6	ri				5.8	10.0
12.	1.9	4.0	-0.3	0.7	ri				3.5	10.0
13.	3.1	7.7	-0.1	13.2	ri				6.5	15.0
14.	6.1	8.6	0.5	0.5	ri				8.5	13.0
15.	2.7	8.5	0.5	20.3	ri				3.4	10.0
16.	4.9	8.0	-1.7	3.5	ri				5.6	9.0
17.	7.5	8.8	5.8	14.6	ri				7.4	13.0
18.	6.5	8.5	5.0	10.5	ri				8.4	15.0
19.	6.3	8.6	2.4	4.8	ri				7.2	12.0
20.	7.8	8.9	7.5	1.7	ri				9.6	12.0
21.	6.6	8.5	6.0	7.1	ri				6.8	9.0
22.	1.9	7.5	0.1	7.0	ri				3.7	9.0
23.	1.4	3.5	-0.5	11.7	sn		2		9.8	20.0
24.	-0.7	1.5	-4.3	0.0	sn				5.2	8.0
25.	1.9	3.9	-0.5	13.7	sl				5.7	18.0
26.	-1.4	3.5	-3.8	12.6	sn	1	4		5.3	14.0
27.	-1.7	0.8	-3.8	4.9	sn	6	4		13.3	20.0
28.	-3.8	-3.1	-4.8	0.0	sn	2	4		7.4	12.0
29.	-3.9	-1.9	-5.8			2	4		4.5	10.0
30.	3.8	7.2	-5.8	0.2	sl	3	4		13.4	25.0
31.	4.0	7.8	1.0	31.4	ri				10.0	14.0



Meðalhiti	=	2.1 °C
Meðalhámarkshiti	=	4.8 °C
Meðallágmarkshiti	=	-0.6 °C
Úrkomumagn	=	233.8 mm
Meðalvindhraði	=	6.9 m/s

Útgefandi : Veðurstofa Íslands
 Heimilisfang : Bústaðavegur 9
 150 Reykjavík

Dags	Meðalhiti (°C)	Hámark (°C)	Lágmark (°C)	Úrkoma (mm)	Úrkomutegund	Snjódýpt (cm)	Snjöhula (0-4)	Sólskin (klst)	Meðalvindur (m/s)	Mesti vindur (m/s)	Hviða (m/s)
1.	-0.7	4.1	-0.9	0.0	ri				9.8	15.4	20.6
2.	1.7	4.1	-3.6	0.0	ri				9.1	16.0	20.1
3.	-1.4	4.2	-4.7						6.9	12.4	18.0
4.	3.7	7.1	-4.7	3.6	sl				11.7	24.2	33.5
5.	3.5	4.8	3.1	2.5	ri				5.9	11.3	15.4
6.	-0.2	8.6	-1.8	0.8	sn		2		2.1	5.7	7.2
7.	-2.2	1.0	-2.6	1.1	sn	2	4		4.9	7.7	9.8
8.	-3.5	-0.6	-4.9	1.3	sn	3	4		2.8	6.2	8.2
9.	-2.2	-0.3	-4.8	0.0	sn	3	4		1.8	3.1	3.6
10.	0.9	3.4	-4.0	0.0	ri	3	4		12.8	29.3	40.7
11.	3.4	5.8	1.7	16.7	ri				6.5	26.8	38.1
12.	3.9	6.1	0.7	1.1	sl				10.8	22.1	31.9
13.	3.2	9.0	0.9	14.3	sl		2		10.6	28.8	38.6
14.	6.1	9.7	1.1	8.3	sl				18.4	28.3	39.6
15.	2.6	7.1	-0.8	8.3	sl		2		7.9	18.5	25.7
16.	6.6	8.1	1.1	2.0	sl				12.6	18.5	26.3
17.	6.2	9.5	1.9	14.9	ri				11.6	21.1	28.3
18.	3.9	9.7	1.8	29.4	ri				8.4	18.5	25.2
19.	7.4	8.8	1.9	1.8	ri				10.7	14.9	21.1
20.	7.9	9.0	6.7	19.5	ri				9.5	16.5	26.3
21.	4.7	8.2	2.2	13.4	ri				9.7	20.6	28.3
22.	1.3	5.2	1.4	2.2	sl				7.0	15.4	18.5
23.	-1.2	1.5	-4.3	2.4	sn		2		6.2	10.8	13.4
24.	0.4	2.7	-3.7	1.9	sl	3	4		7.2	13.4	16.5
25.	-0.3	2.0	-1.9	2.9	sn	4	4		9.5	16.5	20.6
26.	0.4	2.2	-0.7	11.1	sl	7	4		7.0	13.9	17.5
27.	-4.9	0.9	-6.0	0.5	sn	5	4		7.7	11.8	16.5
28.	-5.8	-2.7	-10.3	0.1	sn		2		5.6	11.8	14.9
29.	-2.4	1.2	-8.0				2		7.7	16.0	21.1
30.	5.3	8.1	0.2	18.0	sl				18.7	25.7	39.1
31.	2.6	7.8	-0.2	17.3	sl		2		12.6	21.1	32.9



Meðalhiti	=	1.6 °C
Frávik frá meðaltali 1961-90	=	1.3 °C
Meðalhámarkshiti	=	5.0 °C
Meðallágmarkshiti	=	-1.4 °C
Úrkomumagn	=	195.4 mm
Hlutfall úrkomu af meðaltali 1961-90	=	179.6 %
Meðalvindhraði	=	8.8 m/s