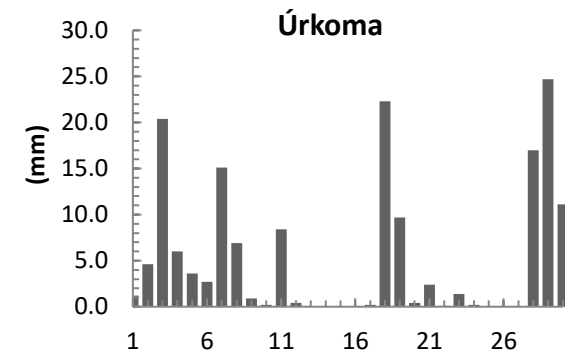
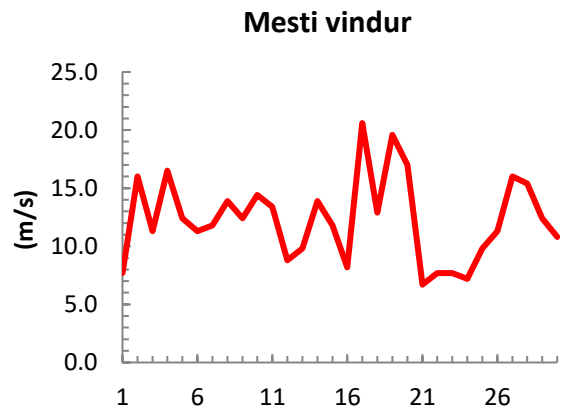
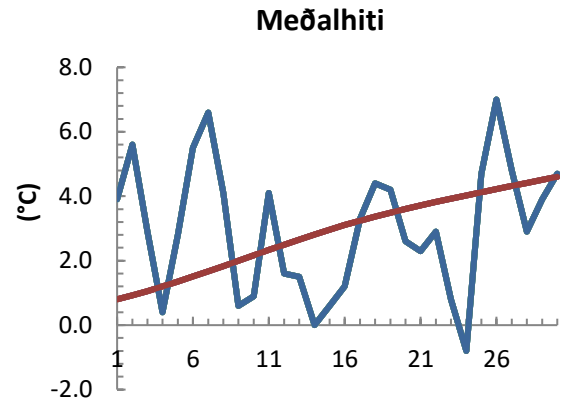


dagur	meðalhiti (°C)	Hámark (°C)	Lágmark (°C)	Úrkoma (mm)	Úrkomutegund	Snjódýpt (cm)	Snjóhula (0-4)	Sólskin (klst)	Meðalvindur (m/s)	Mesti vindur (m/s)	Hviða (m/s)
1	3.9	6.5	0.9	1.2	ri	0	0		4.0	7.7	9.8
2	5.6	8.1	1.9	4.6	sl	0	0		10.3	16.0	23.2
3	2.9	7.7	0.1	20.4	sl	0	0		8.0	11.3	14.9
4	0.4	3.3	-0.6	6.0	sl	2	4		7.2	16.5	20.6
5	2.8	7.1	-2.5	3.6	sn	0	2		7.6	12.4	16.0
6	5.5	7.7	4.6	2.7	sl	0	0		8.4	11.3	14.9
7	6.6	7.7	5.4	15.1	ri	0	0		9.3	11.8	16.0
8	4.1	6.2	3.6	6.9	ri	0	0		8.9	13.9	17.5
9	0.6	3.7	0.5	0.9	ri	0	0		5.8	12.4	16.0
10	0.9	3.4	-3.7	0.2	sn	0	2		7.2	14.4	20.1
11	4.1	6.5	2.4	8.4	sl	0	0		8.2	13.4	17.0
12	1.6	3.7	0.6	0.4	ri	0	0		5.8	8.8	10.8
13	1.5	4.3	-0.3	0.0		0	0		5.8	9.8	12.9
14	0.0	2.9	-1.5	0.0		0	0		10.0	13.9	17.0
15	0.6	3.7	-1.6	0.0		0	0		8.1	11.8	14.4
16	1.2	4.6	-2.3	0.0		0	0		4.2	8.2	9.8
17	3.3	4.6	-0.9	0.2	sl	0	0		13.6	20.6	29.3
18	4.4	6.8	2.4	22.3	ri	0	0		8.1	12.9	15.4
19	4.2	6.3	3.3	9.7	ri	0	0		14.6	19.6	25.7
20	2.6	5.0	0.8	0.4	sn	0	0		11.0	17.0	22.1
21	2.3	5.7	-1.8	2.4	sl	2	4		4.0	6.7	9.3
22	2.9	5.7	1.7	0.1	sn	0	0		4.6	7.7	10.3
23	0.8	4.4	-1.1	1.4	sl	0	2		5.3	7.7	14.9
24	-0.8	3.2	-4.0	0.2	sn	0	0		4.4	7.2	11.3
25	4.7	6.9	-1.4	0.0		0	0		6.8	9.8	11.8
26	7.0	10.3	4.4	0.0		0	0		7.5	11.3	14.4
27	4.8	8.7	2.0	0.0		0	0		8.2	16.0	21.6
28	2.9	6.3	0.2	17.0	sl	0	0		8.2	15.4	21.6
29	3.9	7.3	0.3	24.7	sl	13	4		8.2	12.4	19.0
30	4.7	7.3	0.6	11.1	sl	0	0		6.0	10.8	14.4



Meðalhiti (°C)	3.0
Frávik frá meðaltali 1961 - 1990 (°C)	0.1
Meðalhámarkshiti (°C)	5.9
Meðallágmarkshiti (°C)	0.5
Úrkomumagn (mm)	159.9
Hlutfall úrkomu af meðaltali 1961-1990 (%)	201.1
Meðalvindhraði (m/s)	7.6