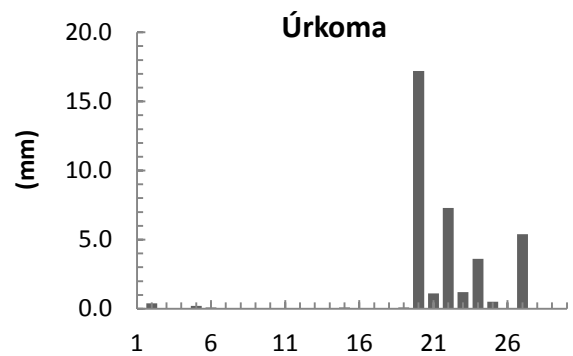
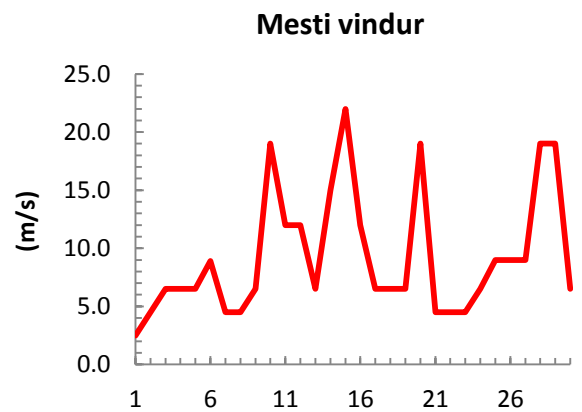
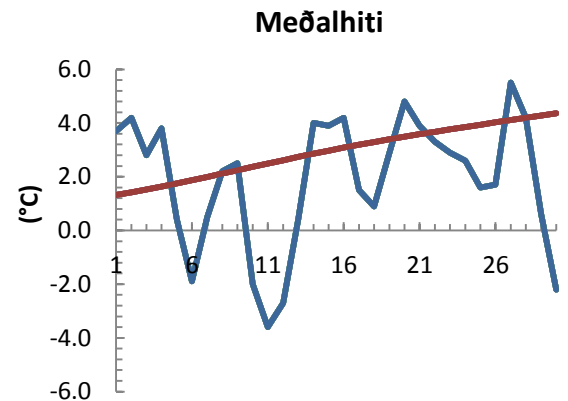


dagur	meðalhiti (°C)	Hámark (°C)	Lágmark (°C)	Úrkoma (mm)	Úrkomutegund	Snjódýpt (cm)	Snjóhula (0-4)	Sólskin (klst)	Meðalvindur (m/s)	Mesti vindur (m/s)	Hviða (m/s)
1	3.7	7.6	-0.4			0	0		1.4	2.5	
2	4.2	7.8	1.1	0.4	ri	0	0		2.2	4.5	
3	2.8	8.0	-0.8			0	0		2.9	6.5	
4	3.8	6.8	0.4			0	0		4.5	6.5	
5	0.4	7.4	-0.8	0.2	ri	0	0		3.2	6.5	
6	-1.9	1.5	-4.2	0.1	sn	0	0		4.8	8.9	
7	0.5	4.8	-3.8			0	0		3.3	4.5	
8	2.2	7.0	-1.7			0	0		2.6	4.5	
9	2.5	4.5	-0.8			0	0		3.8	6.5	
10	-2.0	5.0	-3.2			0	0		8.6	19.0	
11	-3.6	-1.0	-4.3			0	0		9.1	12.0	
12	-2.7	0.3	-5.3			0	0		10.2	12.0	
13	0.4	4.0	-3.8			0	0		4.3	6.5	
14	4.0	5.6	1.0			0	0		10.3	15.0	
15	3.9	5.4	1.0	0.1	ri	0	0		16.4	22.0	
16	4.2	7.2	3.2			0	0		6.5	12.0	
17	1.5	7.5	0.6			0	0		4.6	6.5	
18	0.9	3.0	-0.8			0	0		5.1	6.5	
19	2.9	5.8	-2.4	0.1	sn	0	0		3.4	6.5	
20	4.8	6.4	3.9	17.2	sl	0	0		8.8	19.0	
21	3.9	7.8	-0.8	1.1	ri	0	0		2.1	4.5	
22	3.3	7.5	1.0	7.3	sl	0	0		3.2	4.5	
23	2.9	5.0	2.2	1.2	sl	0	0		2.4	4.5	
24	2.6	5.5	0.8	3.6	ri	0	0		3.3	6.5	
25	1.6	4.5	-0.4	0.5	sl	0	0		6.4	9.0	
26	1.7	5.5	-1.8			0	0		4.9	9.0	
27	5.5	9.6	1.3	5.4	ri	0	0		6.2	9.0	
28	4.2	10.0	3.2			0	0		13.8	19.0	
29	0.6	5.5	0.4			0	0		9.5	19.0	
30	-2.2	1.5	-4.3			0	0		5.0	6.5	



Meðalhiti (°C)	1.9
Frávik frá meðaltali 1961 - 1990 (°C)	-0.9
Meðalhámarkshiti (°C)	5.6
Meðallágmarkshiti (°C)	-0.7
Úrkomumagn (mm)	37.2
Hlutfall úrkomu af meðaltali 1961-1990 (%)	43.8
Meðalvindhraði (m/s)	5.8

