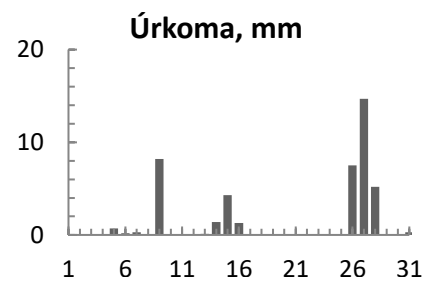
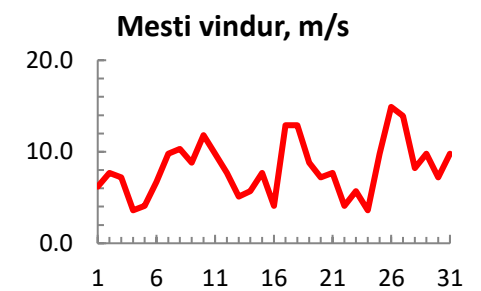
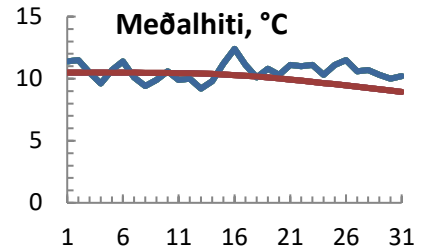


dagur	meðalhiti (°C)	Hámark (°C)	Lágmark (°C)	Úrkoma (mm)	Úrkomutegund	Snjódýpt (cm)	Snjóhula (0-4)	Sólskin (klst)	Meðalvindur (m/s)	Mesti vindur (m/s)	Hviða (m/s)
1	11.4	14.4	8.5			0	0		3.0	6.2	9.3
2	11.5	14.0	9.0			0	0		4.4	7.7	9.3
3	10.5	13.5	8.2			0	0		3.7	7.2	9.3
4	9.6	11.4	8.4	0.0		0	0		1.8	3.6	5.1
5	10.7	12.9	7.9	0.7	ri	0	0		2.1	4.1	5.7
6	11.4	14.2	10.6	0.2	ri	0	0		4.2	6.7	8.8
7	10.1	13.4	7.4	0.3	ri	0	0		6.6	9.8	11.8
8	9.4	12.9	7.5			0	0		5.7	10.3	13.4
9	9.9	11.2	9.6	8.2	ri	0	0		5.7	8.8	11.8
10	10.6	13.8	8.2			0	0		8.4	11.8	14.4
11	9.9	13.7	7.7			0	0		6.5	9.8	12.4
12	10.0	13.8	7.1			0	0		4.0	7.7	11.8
13	9.2	12.3	6.7	0.1	ri	0	0		2.7	5.1	7.2
14	9.8	12.7	7.8	1.4	ri	0	0		3.6	5.7	7.7
15	11.2	13.2	9.8	4.3	ri	0	0		3.5	7.7	9.8
16	12.4	16.3	8.7	1.3	ri	0	0		2.7	4.1	6.2
17	11.1	16.2	9.8			0	0		6.9	12.9	16.0
18	10.1	13.2	8.2			0	0		9.2	12.9	16.0
19	10.8	14.0	8.1			0	0		4.8	8.8	10.8
20	10.3	14.1	6.2			0	0		4.5	7.2	8.8
21	11.1	14.6	7.2			0	0		4.3	7.7	10.3
22	11.0	14.5	6.9			0	0		2.6	4.1	6.2
23	11.1	15.7	6.8			0	0		2.5	5.7	6.7
24	10.3	15.7	6.9			0	0		2.0	3.6	5.1
25	11.1	12.7	10.3			0	0		6.0	9.8	12.9
26	11.5	12.7	10.5	7.5	ri	0	0		10.1	14.9	20.6
27	10.6	12.3	10.3	14.7	ri	0	0		8.1	13.9	17.5
28	10.7	12.9	9.3	5.2	ri	0	0		3.8	8.2	10.8
29	10.3	13.5	8.2	0.0		0	0		7.1	9.8	12.4
30	10.0	13.5	8.5			0	0		4.8	7.2	8.2
31	10.2	12.2	8.4	0.3	ri	0	0		6.4	9.8	12.9



Meðalhiti (°C)	10.6
Frávik frá meðaltali 1961 - 1990 (°C)	0.6
Meðalhámarkshiti (°C)	13.6
Meðallágmarkshiti (°C)	8.4
Úrkomumagn (mm)	44.2
Hlutfall úrkomu af meðaltali 1961-1990 (%)	47.6
Meðalvindhraði (m/s)	4.9