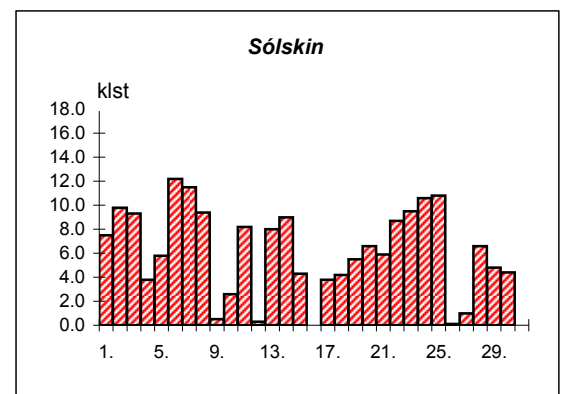
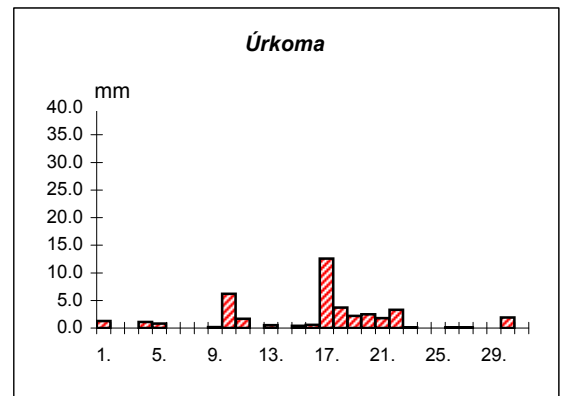
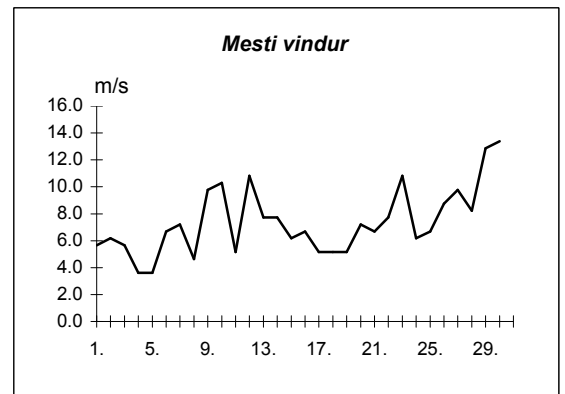
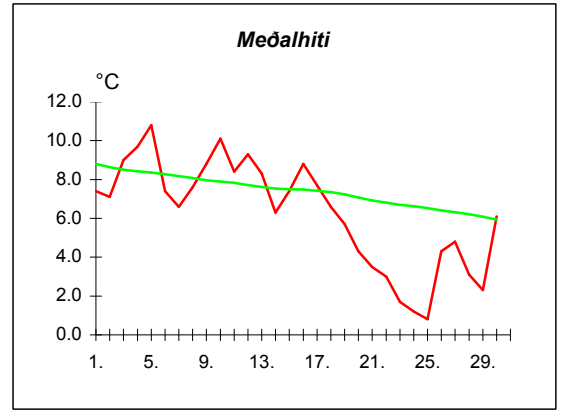
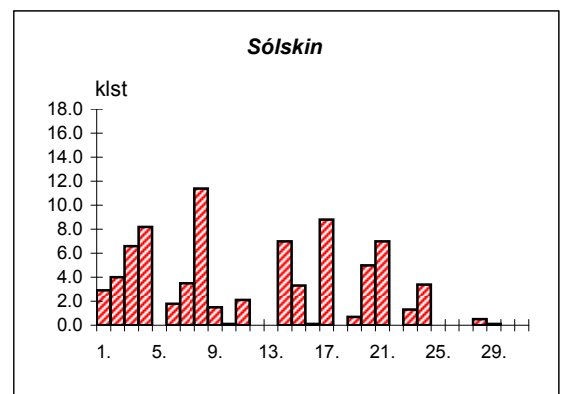
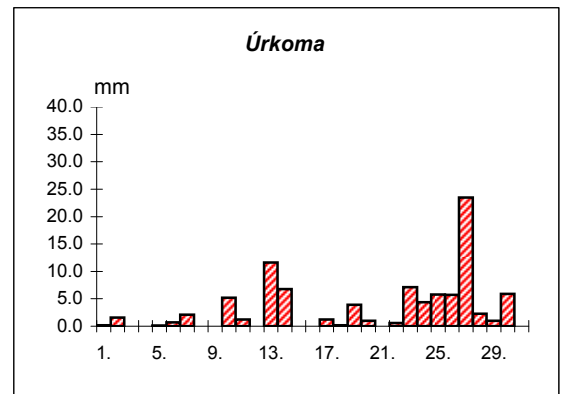
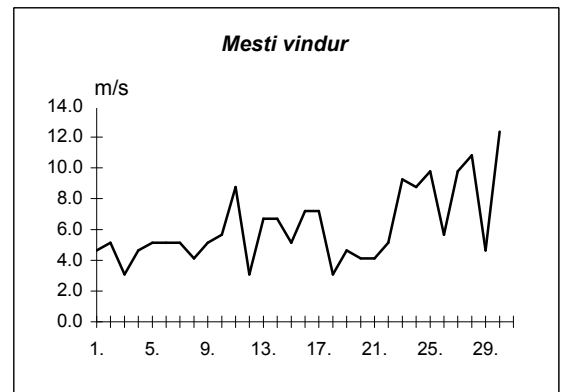
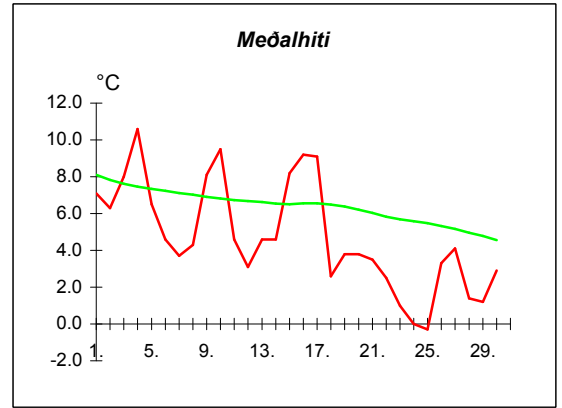


Dags	Meðalhiti (°C)	Hámark (°C)	Lágmark (°C)	Úrkoma (mm)	Úrkomutegund	Snjódýpt (cm)	Snjóhula (0-4)	Sólskin(klst)	Meðalvindur (m/s)	Mesti vindur (m/s)	Hviða (m/s)
1.	7.4	9.6	4.6	1.3	ri		0	7.5	3.9	5.7	9.8
2.	7.1	9.5	4.9	0.0			0	9.8	2.7	6.2	9.3
3.	9.0	12.6	5.0	---			0	9.3	3.0	5.7	8.2
4.	9.7	11.8	7.7	1.1	ri		0	3.8	1.5	3.6	5.7
5.	10.8	14.5	9.3	0.8	ri		0	5.8	1.8	3.6	5.7
6.	7.4	12.2	5.4	0.0			0	12.2	3.1	6.7	11.3
7.	6.6	10.1	3.4	---			0	11.5	3.9	7.2	11.8
8.	7.6	10.3	5.3	---			0	9.4	2.6	4.6	7.2
9.	8.8	10.4	5.8	0.2	ri		0	0.5	5.0	9.8	15.4
10.	10.1	12.0	8.7	6.2	ri		0	2.6	3.0	10.3	15.4
11.	8.4	11.0	7.7	1.7	ri		0	8.2	2.4	5.1	10.3
12.	9.3	10.9	5.5	---			0	0.3	6.0	10.8	19.6
13.	8.3	11.5	6.3	0.5	ri		0	8.0	3.8	7.7	12.4
14.	6.3	8.5	4.3	---			0	9.0	4.5	7.7	12.4
15.	7.4	9.7	5.0	0.4	ri		0	4.3	3.1	6.2	9.8
16.	8.8	10.5	6.0	0.6	ri		0	0.0	3.9	6.7	10.3
17.	7.7	10.4	7.4	12.6	ri		0	3.8	2.5	5.1	8.2
18.	6.6	8.6	5.4	3.7	ri		0	4.2	2.8	5.1	8.8
19.	5.7	8.1	3.8	2.2	ri		0	5.5	3.4	5.1	8.8
20.	4.3	7.4	2.0	2.5	sl		0	6.6	2.6	7.2	10.8
21.	3.5	6.7	1.2	1.8	sl		0	5.9	2.3	6.7	9.8
22.	3.0	5.4	0.7	3.3	sl		0	8.7	3.8	7.7	13.4
23.	1.7	3.5	0.7	0.1	sl		0	9.5	6.5	10.8	17.0
24.	1.2	4.0	-2.0	0.0			0	10.6	2.6	6.2	9.8
25.	0.8	4.0	-3.4	---			0	10.8	3.5	6.7	12.9
26.	4.3	6.0	0.7	0.1	sl		0	0.1	5.9	8.8	14.9
27.	4.8	6.2	4.1	0.1	sl		0	1.0	7.7	9.8	17.0
28.	3.1	5.0	2.5	0.0			0	6.6	6.6	8.2	15.4
29.	2.3	5.3	-2.0	0.0			0	4.8	6.2	12.9	22.1
30.	6.1	8.5	0.6	1.9	ri		0	4.4	6.8	13.4	21.1



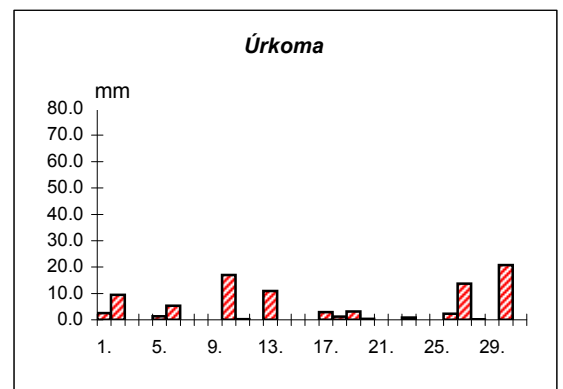
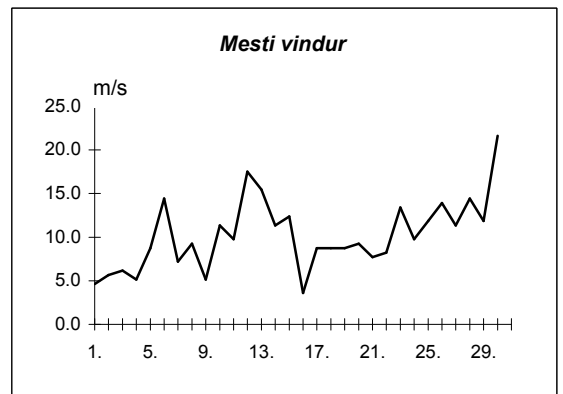
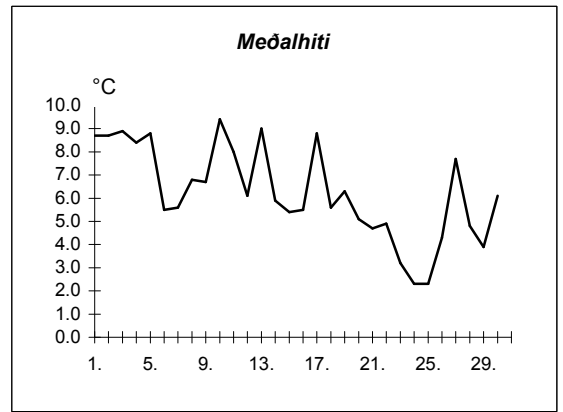
Meðalhiti	=	6.3 °C
Frávik frá meðaltali 1931-60	=	-2.3 °C
Meðalhámarkshiti	=	8.8 °C
Meðallágmarkshiti	=	3.9 °C
Úrkomumagn	=	41.1 mm
Hlutfall úrkomu af meðaltali 1931-60	=	57.0 %
Meðalvindhraði	=	3.9 m/s
Sólskinsstundir	=	184.7 klst

Dags	Meðalhiti (°C)	Hámark (°C)	Lágmark (°C)	Úrkoma (mm)	Úrkomutegund	Snjódýpt (cm)	Snjóhula (0-4)	Sólskin(klst)	Meðalvindur (m/s)	Mesti vindur (m/s)	Hviða (m/s)
1.	7.1	10.2	4.3	0.2	ri		0	2.9	2.4	4.6	6.7
2.	6.3	8.8	5.6	1.6	ri		0	4.0	2.4	5.1	8.2
3.	8.0	12.6	3.0	---			0	6.6	0.9	3.1	4.6
4.	10.6	15.0	6.3	---			0	8.2	1.3	4.6	7.7
5.	6.5	13.8	4.8	0.1	ri		0	0.0	2.3	5.1	8.8
6.	4.6	6.5	4.3	0.7	ri		0	1.8	2.3	5.1	9.3
7.	3.7	8.5	0.8	2.1	sl		0	3.5	1.6	5.1	8.2
8.	4.3	10.0	-2.1	---			0	11.4	1.3	4.1	5.1
9.	8.1	11.7	1.7	---			0	1.5	2.6	5.1	9.3
10.	9.5	13.4	7.2	5.2	ri		0	0.1	2.1	5.7	11.8
11.	4.6	12.2	4.2	1.2	ri		0	2.1	5.5	8.8	13.4
12.	3.1	6.1	-0.4	0.0			0	0.0	0.9	3.1	6.7
13.	4.6	6.1	3.5	11.6	ri		0	0.0	3.9	6.7	12.4
14.	4.6	7.4	3.8	6.8	ri		0	7.0	2.8	6.7	9.8
15.	8.2	11.5	1.8	---			0	3.3	1.7	5.1	10.8
16.	9.2	10.5	4.7	0.0			0	0.1	2.7	7.2	14.9
17.	9.1	15.0	7.0	1.2	ri		0	8.8	3.1	7.2	13.9
18.	2.6	7.0	2.0	0.2	ri		0	0.0	1.1	3.1	6.2
19.	3.8	6.3	1.6	3.9	ri		0	0.7	1.6	4.6	8.2
20.	3.8	7.4	1.6	1.0	ri		0	5.0	1.0	4.1	7.7
21.	3.5	7.5	0.0	---			0	7.0	1.3	4.1	6.7
22.	2.5	5.6	1.7	0.6	sl		0	0.0	2.6	5.1	8.8
23.	1.0	2.8	0.3	7.1	sl		0	1.3	3.8	9.3	12.9
24.	0.0	4.9	-2.8	4.4	sl	3	2	3.4	3.5	8.8	13.9
25.	-0.3	2.0	-2.8	5.8	sl	10	4	0.0	3.8	9.8	18.0
26.	3.3	4.5	0.3	5.7	sl		2	0.0	3.8	5.7	10.3
27.	4.1	6.5	3.0	23.5	ri		0	0.0	7.2	9.8	16.0
28.	1.4	3.3	0.7	2.3	sl		0	0.5	7.6	10.8	17.0
29.	1.2	2.7	0.3	1.0	sl		0	0.1	1.8	4.6	7.2
30.	2.9	5.4	0.8	5.9	sl		0	0.0	5.6	12.4	18.0



Meðalhiti	=	4.7 °C
Frávik frá meðaltali 1931-60	=	-3.1 °C
Meðalhámarkshiti	=	8.2 °C
Meðallágmarkshiti	=	2.2 °C
Úrkomumagn	=	92.1 mm
Hlutfall úrkomu af meðaltali 1931-60	=	200.0 %
Meðalvindhraði	=	2.8 m/s
Sólskinsstundir	=	79.3 klst

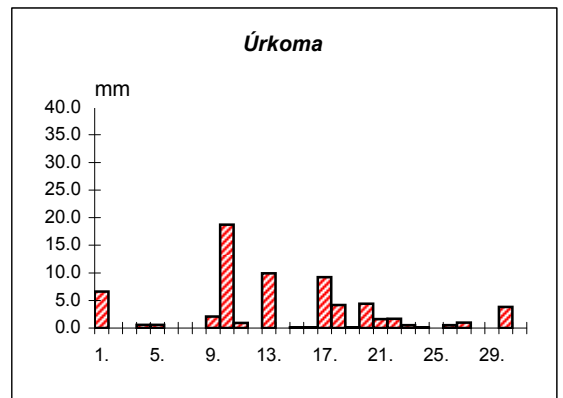
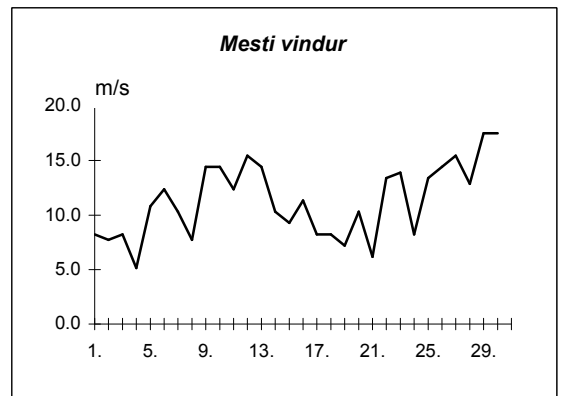
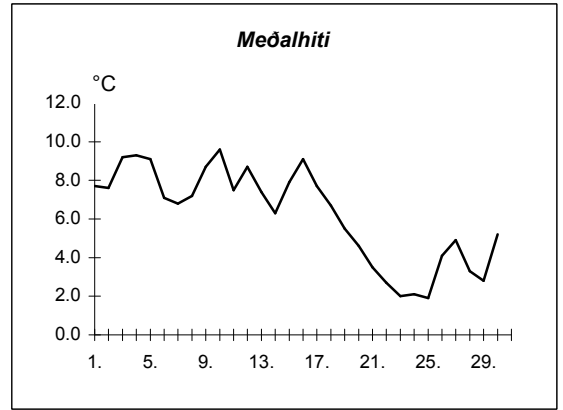
Dags	Meðalhiti (°C)	Hámark (°C)	Lágmark (°C)	Úrkoma (mm)	Úrkomutegund	Snjódypt (cm)	Snjóhula (0-4)	Sólskín(klást)	Meðalvindur (m/s)	Mesti vindur (m/s)	Hviða (m/s)
1.	8.7	11.6	5.4	2.6	ri		0		2.6	4.6	7.7
2.	8.7	12.2	5.2	9.5	ri		0		2.1	5.7	7.7
3.	8.9	12.5	6.3	---			0		3.2	6.2	10.3
4.	8.4	13.4	2.8	---			0		2.0	5.1	7.2
5.	8.8	12.1	6.1	1.3	ri		0		2.4	8.8	11.3
6.	5.5	10.0	4.8	5.3	ri		0		10.3	14.4	21.1
7.	5.6	8.0	2.3	0.0			0		4.8	7.2	12.9
8.	6.8	11.0	4.2	0.0			0		4.5	9.3	13.4
9.	6.7	10.2	1.9	---			0		2.1	5.1	4.6
10.	9.4	11.0	8.0	17.0	ri		0		5.6	11.3	15.4
11.	8.0	10.7	5.2	0.2	ri		0		4.1	9.8	13.4
12.	6.1	9.0	4.4	0.0			0		6.3	17.5	26.3
13.	9.0	11.6	6.5	10.9	sl		0		11.2	15.4	21.1
14.	5.9	9.5	5.5	0.0			0		6.4	11.3	14.9
15.	5.4	11.0	0.4	---			0		4.5	12.4	16.0
16.	5.5	10.0	-0.2	---			0		2.0	3.6	4.6
17.	8.8	13.5	3.9	2.9	sl		0		3.2	8.8	11.3
18.	5.6	12.8	4.1	1.2	sl		0		4.4	8.8	11.3
19.	6.3	10.5	4.3	3.1	ri		0		4.1	8.8	12.4
20.	5.1	8.6	4.2	0.4	ri		0		3.5	9.3	12.4
21.	4.7	9.7	1.1	---			0		3.0	7.7	10.3
22.	4.9	6.7	3.9	---			0		4.8	8.2	13.4
23.	3.2	5.7	2.7	0.9	ri		0		7.9	13.4	21.1
24.	2.3	5.5	0.1	0.0			0		4.4	9.8	13.9
25.	2.3	5.1	-0.2	---			0		6.2	11.8	21.6
26.	4.3	6.0	1.9	2.3	ri		0		8.2	13.9	17.5
27.	7.7	11.1	4.8	13.7	sl		0		5.4	11.3	15.4
28.	4.8	7.4	3.9	0.1	ri		0		10.0	14.4	23.2
29.	3.9	7.3	1.2	---			0		6.2	11.8	17.0
30.	6.1	8.5	2.2	20.7	ri		0		10.8	21.6	26.8



Meðalhiti	=	6.2 °C
Meðalhámarkshiti	=	9.7 °C
Meðallágmarkshiti	=	3.6 °C
Úrkomumagn	=	92.1 mm
Meðalvindhraði	=	5.2 m/s

Útgefandi : **Veðurstofa Íslands**
 Heimilisfang : **Bústaðavegur 9**
150 Reykjavík

Dags	Meðalhiti (°C)	Hámark (°C)	Lágmark (°C)	Úrkoma (mm)	Úrkomutegund	Snjódýpt (cm)	Snjóhula (0-4)	Sólskin(klist)	Meðalvindur (m/s)	Mesti vindur (m/s)	Hviða (m/s)
1.	7.7	9.8	5.6	6.6	ri		0		6.2	8.2	11.3
2.	7.6	10.4	4.7	---			0		3.7	7.7	9.8
3.	9.2	12.2	6.2	---			0		4.9	8.2	10.8
4.	9.3	12.2	8.3	0.6	ri		0		3.2	5.1	6.7
5.	9.1	11.7	8.2	0.6	ri		0		7.5	10.8	13.9
6.	7.1	11.7	6.6	0.0			0		9.4	12.4	15.4
7.	6.8	10.4	3.4	---			0		7.3	10.3	13.9
8.	7.2	10.1	5.6	---			0		3.9	7.7	10.8
9.	8.7	10.2	5.3	2.1	sl		0		8.0	14.4	19.0
10.	9.6	11.3	8.6	18.7	ri		0		4.8	14.4	20.6
11.	7.5	10.3	6.5	0.9	ri		0		7.7	12.4	15.4
12.	8.7	10.3	6.5	0.0			0		9.5	15.4	20.6
13.	7.4	10.5	6.9	9.9	ri		0		11.7	14.4	19.0
14.	6.3	8.2	4.4	0.0			0		6.6	10.3	13.4
15.	7.9	10.0	5.2	0.1	ri		0		4.9	9.3	11.3
16.	9.1	10.5	7.1	0.1	ri		0		7.0	11.3	14.9
17.	7.7	10.4	7.5	9.2	ri		0		4.1	8.2	9.8
18.	6.7	10.7	5.7	4.2	ri		0		5.0	8.2	10.8
19.	5.5	8.2	4.7	0.1	ri		0		4.7	7.2	11.8
20.	4.6	6.7	2.8	4.4	sl		0		4.6	10.3	13.9
21.	3.5	6.2	1.8	1.6	sl		0		3.6	6.2	8.8
22.	2.7	5.5	0.8	1.7	ri		0		5.0	13.4	17.0
23.	2.0	4.5	1.0	0.5	sl		0		9.6	13.9	18.5
24.	2.1	3.9	-0.4	0.1	sn		2		5.0	8.2	10.8
25.	1.9	3.8	0.6	---			0		8.0	13.4	18.5
26.	4.1	5.4	1.4	0.5	ri		0		11.6	14.4	20.1
27.	4.9	6.6	4.2	1.0	sl		0		12.6	15.4	20.1
28.	3.3	5.4	3.2	0.0			0		11.1	12.9	16.5
29.	2.8	6.0	-1.1	---			0		10.8	17.5	23.2
30.	5.2	9.1	2.6	3.8	sl		0		12.0	17.5	21.6



Meðalhiti	=	6.2 °C
Frávik frá meðaltali 1931-60	=	-2.2 °C
Meðalhámarkshiti	=	8.7 °C
Meðallágmarkshiti	=	4.5 °C
Úrkomumagn	=	66.7 mm
Hlutfall úrkomu af meðaltali 1931-60	=	58.0 %
Meðalvindhraði	=	7.2 m/s