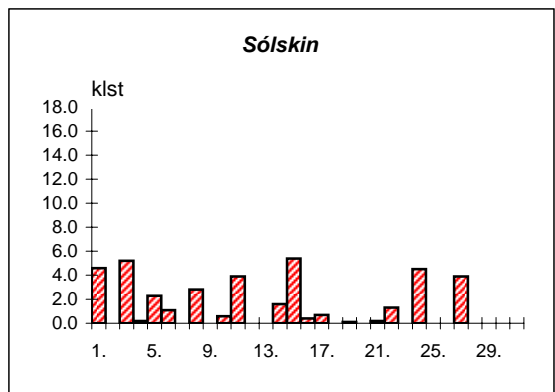
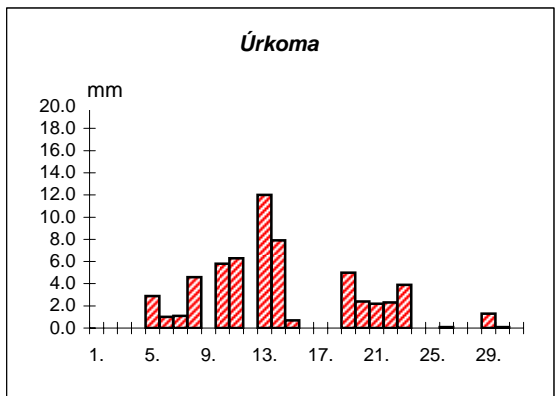
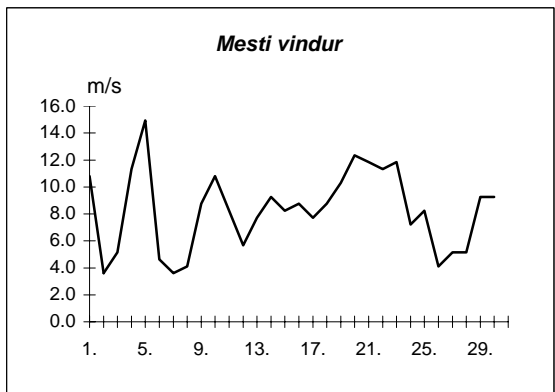
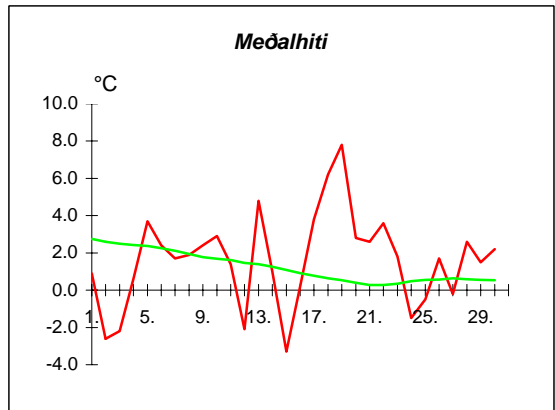
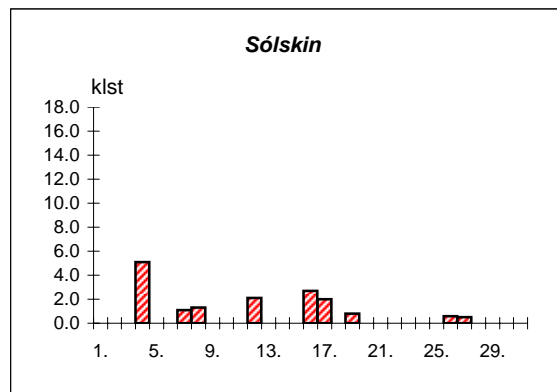
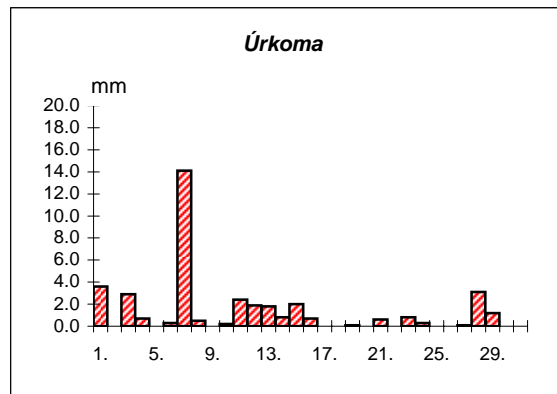
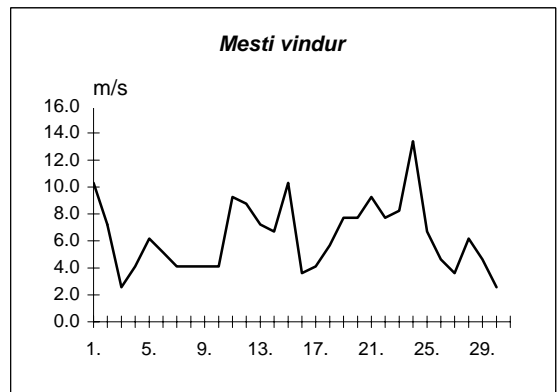
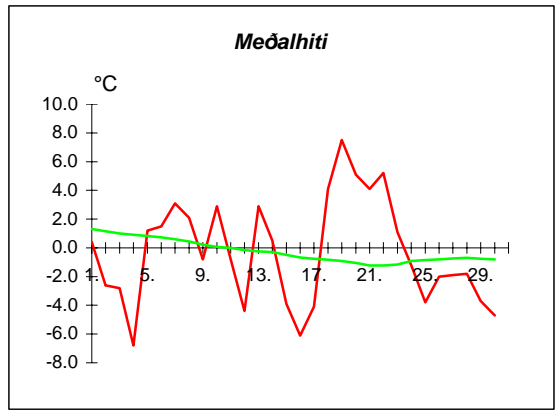


Dags	Meðalhiti (°C)	Hámark (°C)	Lágmark (°C)	Úrkoma (mm)	Úrkomutegund	Snjódýpt (cm)	Snjöhula (0-4)	Sólskin(klst)	Meðalvindur (m/s)	Mesti vindur (m/s)	Hviða (m/s)
1.	0.9	2.6	0.5	0.0		5	4	4.6	5.1	10.8	17.5
2.	-2.6	0.6	-4.2	---		4	4	0.0	1.1	3.6	5.7
3.	-2.2	1.6	-4.9	---		4	4	5.2	2.0	5.1	8.8
4.	0.6	4.0	-6.4	---		4	4	0.2	4.8	11.3	18.5
5.	3.7	6.4	2.0	2.9	ri		0	2.3	5.4	14.9	20.6
6.	2.4	4.6	0.5	1.0	sl		0	1.1	2.1	4.6	7.2
7.	1.7	4.2	0.2	1.1	ri		0	0.0	1.7	3.6	7.7
8.	1.9	3.2	0.8	4.6	sl		0	2.8	2.1	4.1	6.2
9.	2.4	3.2	0.5	0.0			0	0.0	6.1	8.8	15.4
10.	2.9	5.0	1.2	5.8	sl		0	0.6	5.1	10.8	19.0
11.	1.4	3.4	-0.2	6.3	sl	1	4	3.9	3.7	8.2	12.4
12.	-2.1	2.0	-4.1	---			0	0.0	3.0	5.7	11.8
13.	4.8	6.6	-3.4	12.0	sl		0	0.0	5.1	7.7	13.9
14.	1.0	4.6	-0.5	7.9	sl	0	2	1.6	3.3	9.3	14.9
15.	-3.3	2.8	-5.8	0.7	sl		2	5.4	3.1	8.2	13.9
16.	0.2	1.4	-6.4	---			0	0.4	5.1	8.8	14.4
17.	3.8	4.9	0.7	0.0			0	0.7	5.9	7.7	13.9
18.	6.2	7.5	4.2	0.0			0	0.0	6.1	8.8	13.9
19.	7.8	9.0	5.4	5.0	ri		0	0.1	6.9	10.3	17.0
20.	2.8	8.6	1.8	2.4	ri		0	0.0	6.1	12.4	19.0
21.	2.6	3.8	0.2	2.2	sl		2	0.2	5.6	11.8	18.5
22.	3.6	4.6	1.9	2.3	sl		0	1.3	7.0	11.3	16.5
23.	1.8	4.9	-0.5	3.9	sl		0	0.0	7.4	11.8	19.0
24.	-1.5	-0.2	-3.7	0.0			0	4.5	2.8	7.2	14.9
25.	-0.5	1.3	-3.2	---			0	0.0	2.6	8.2	12.9
26.	1.7	2.9	0.9	0.1	ri		0	0.0	1.5	4.1	6.7
27.	-0.2	2.2	-2.0	---			0	3.9	2.3	5.1	7.7
28.	2.6	3.3	-0.4	---			0	0.0	3.2	5.1	7.7
29.	1.5	3.0	0.7	1.3	sl		0	0.0	6.2	9.3	15.4
30.	2.2	2.9	0.7	0.1	sl		0	0.0	5.9	9.3	16.0



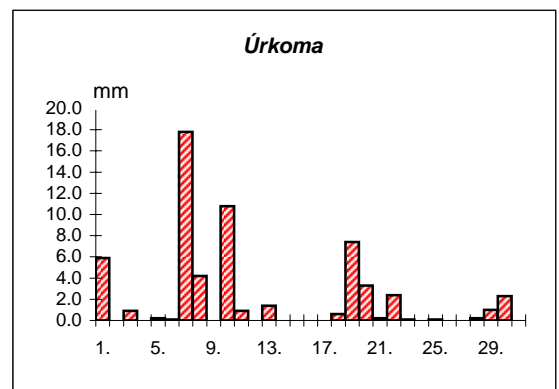
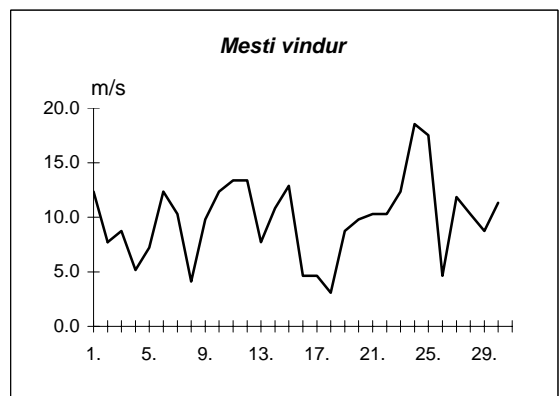
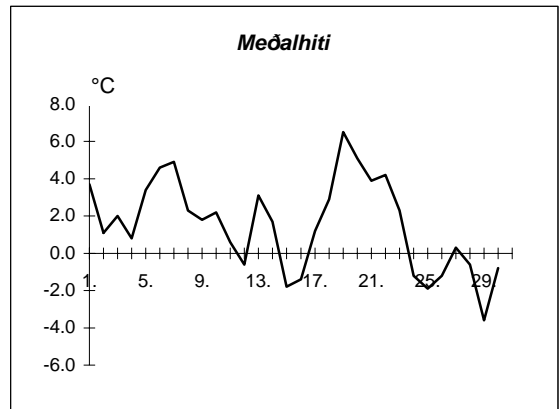
Meðalhiti	=	1.6 °C
Frávik frá meðaltali 1931-60	=	-1.0 °C
Meðalhámarkshiti	=	3.8 °C
Meðallágmarkshiti	=	-0.8 °C
Úrkomumagn	=	59.6 mm
Hlutfall úrkomu af meðaltali 1931-60	=	70.0 %
Meðalvindhraði	=	4.3 m/s
Sólskinsstundir	=	38.8 klst

Dags	Meðalhiti (°C)	Hámark (°C)	Lágmark (°C)	Úrkoma (mm)	Úrkomutegund	Snjóþýpt (cm)	Snjóhula (0-4)	Sólskin(klst)	Meðalvindur (m/s)	Mesti vindur (m/s)	Hviða (m/s)
1.	0.4	2.1	0.0	3.6	sl	18	4	0.0	7.6	10.3	16.5
2.	-2.6	0.5	-3.5	0.0		15	4	0.0	1.5	7.2	10.8
3.	-2.8	-1.5	-4.2	2.9	sn	22	4	0.0	1.4	2.6	4.6
4.	-6.8	-1.2	-9.8	0.7	sn	23	4	5.1	2.0	4.1	7.2
5.	1.2	3.6	-9.8	---		22	4	0.0	3.7	6.2	11.3
6.	1.5	2.8	-1.9	0.3	ri	19	4	0.0	2.0	5.1	7.7
7.	3.1	3.5	-0.3	14.1	sl		2	1.1	1.8	4.1	7.2
8.	2.1	4.5	1.3	0.5	ri		2	1.3	1.8	4.1	6.7
9.	-0.8	1.6	-4.5	---		10	2	0.0	1.9	4.1	8.8
10.	2.9	4.4	1.0	0.2	sl	10	2	0.0	1.4	4.1	6.7
11.	-0.8	3.0	-3.3	2.4	ri	8	2	0.0	3.1	9.3	13.4
12.	-4.4	2.0	-7.1	1.9	sn	8	4	2.1	2.3	8.8	12.4
13.	2.9	6.3	-7.1	1.8	sl	10	2	0.0	3.8	7.2	13.4
14.	0.5	5.4	-0.2	0.8	sl	9	2	0.0	1.7	6.7	13.4
15.	-3.9	0.0	-5.8	2.0	sn	10	2	0.0	6.2	10.3	16.0
16.	-6.1	-2.6	-8.6	0.7	sn	10	2	2.7	1.8	3.6	5.1
17.	-4.1	-4.2	-8.4	---		10	2	2.0	1.3	4.1	6.7
18.	4.1	5.6	-4.9	---		10	2	0.0	1.9	5.7	10.3
19.	7.5	8.6	4.5	0.1	ri	7	2	0.8	4.4	7.7	14.4
20.	5.1	9.6	4.0	0.0			0	0.0	3.8	7.7	13.4
21.	4.1	6.0	1.9	0.6	sl		0	0.0	6.2	9.3	18.5
22.	5.2	6.0	1.7	---			0	0.0	4.8	7.7	15.4
23.	1.1	6.2	-0.9	0.8	sl		0	0.0	4.1	8.2	16.5
24.	-1.2	-0.3	-3.1	0.3	sn	1	2	0.0	7.8	13.4	21.6
25.	-3.8	-1.2	-6.9	0.0			2	0.0	2.0	6.7	8.8
26.	-2.0	-1.5	-4.3	---			2	0.6	2.1	4.6	6.7
27.	-1.9	0.4	-4.3	0.1	sn	1	2	0.5	2.3	3.6	6.7
28.	-1.8	-0.3	-5.3	3.1	sn	4	4	0.0	2.0	6.2	12.4
29.	-3.7	-0.8	-4.0	1.2	sn	4	4	0.0	1.3	4.6	7.7
30.	-4.7	-3.5	-6.1	0.0			0	0.0	1.2	2.6	4.6



Meðalhiti	=	-0.3 °C
Frávik frá meðaltali 1931-60	=	-1.6 °C
Meðalhámarkshiti	=	2.2 °C
Meðallágmarkshiti	=	-3.3 °C
Úrkomumagn	=	37.9 mm
Hlutfall úrkomu af meðaltali 1931-60	=	195.0 %
Meðalvindhraði	=	3.0 m/s
Sólskinsstundir	=	16.2 klst

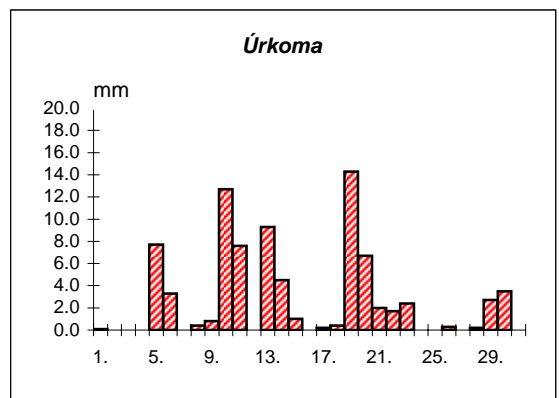
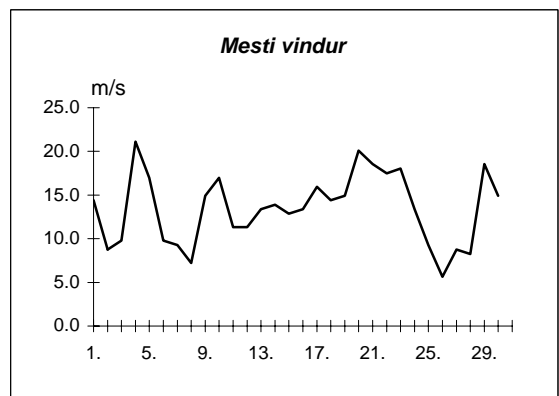
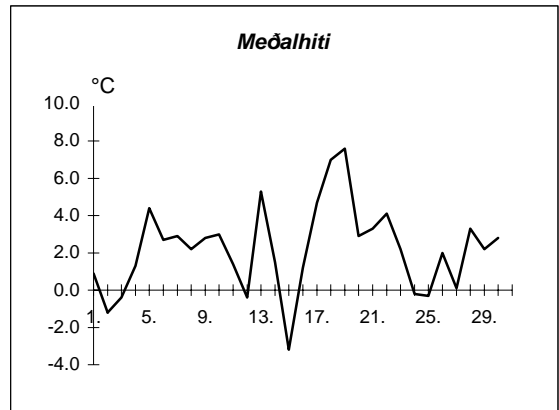
Dags	Meðalhiti (°C)	Hámark (°C)	Lágmark (°C)	Úrkoma (mm)	Úrkomutegund	Snjóþýpt (cm)	Snjóhúla (0-4)	Sólskin(klst)	Meðalvindur (m/s)	Mesti vindur (m/s)	Hviða (m/s)
1.	3.7	5.5	2.3	5.9	ri		0		7.6	12.4	19.0
2.	1.1	3.9	-0.6	---			0		2.9	7.7	12.9
3.	2.0	4.5	1.1	0.9	sl		0		3.9	8.8	11.8
4.	0.8	3.5	-2.5	---			0		1.8	5.1	7.2
5.	3.4	5.6	0.0	0.2	ri		0		3.9	7.2	9.8
6.	4.6	7.3	2.0	0.1	ri		0		7.4	12.4	17.0
7.	4.9	6.3	3.5	17.8	ri		0		3.4	10.3	13.4
8.	2.3	5.6	1.0	4.2	ri		0		1.8	4.1	5.1
9.	1.8	5.2	-2.1	---			0		3.6	9.8	14.4
10.	2.2	5.1	1.6	10.8	ri		0		1.3	12.4	15.4
11.	0.6	4.0	-2.6	0.9	ri		0		4.6	13.4	19.6
12.	-0.6	4.5	-2.0	---			0		4.3	13.4	22.1
13.	3.1	6.7	-2.4	1.4	sl		2		2.9	7.7	12.4
14.	1.7	6.7	0.5	0.0			0		4.0	10.8	17.0
15.	-1.8	1.1	-4.0	---			0		7.1	12.9	19.6
16.	-1.4	-0.5	-3.1	---			0		2.5	4.6	7.2
17.	1.2	2.5	-1.4	---			0		2.0	4.6	5.1
18.	2.9	4.7	1.0	0.6	ri		0		1.4	3.1	5.1
19.	6.5	8.4	3.0	7.4	ri		0		4.4	8.8	11.8
20.	5.1	7.7	3.7	3.3	ri		0		5.7	9.8	13.9
21.	3.9	5.0	2.7	0.2	ri		0		5.2	10.3	16.0
22.	4.2	5.8	2.7	2.4	ri		0		4.0	10.3	15.4
23.	2.3	5.9	-1.4	0.1	ri		0		5.6	12.4	23.2
24.	-1.2	3.8	-2.8	0.0			0		11.8	18.5	26.8
25.	-1.9	1.0	-3.5	0.1	sn		0		4.8	17.5	23.2
26.	-1.2	0.5	-4.1	---			0		2.1	4.6	5.7
27.	0.3	5.4	-2.3	---			0		5.9	11.8	16.5
28.	-0.6	1.2	-2.1	0.2	sn	1	4		4.4	10.3	14.4
29.	-3.6	2.1	-4.2	1.0	sn	1	4		4.0	8.8	11.3
30.	-0.8	1.0	-4.4	2.3	sn	6	4		4.4	11.3	13.9



Meðalhiti	=	1.5 °C
Meðalhámarkshiti	=	4.3 °C
Meðallágmarkshiti	=	-0.7 °C
Úrkomumagn	=	59.8 mm
Meðalvindhraði	=	4.3 m/s

Útgefandi : **Veðurstofa Íslands**
 Heimilisfang : **Bústaðavegur 9**
150 Reykjavík

Dags	Meðalhiti (°C)	Hámark (°C)	Lágmark (°C)	Úrkoma (mm)	Úrkomutegund	Snjódýpt (cm)	Snjóhula (0-4)	Sólskin(klíst)	Meðalvindur (m/s)	Mesti vindur (m/s)	Hviða (m/s)
1.	0.9	2.5	0.2	0.1	sl	15	4		11.1	14.4	18.5
2.	-1.2	0.7	-1.5	---		10	2		6.4	8.8	11.3
3.	-0.4	1.0	-2.8	---		5	2		6.7	9.8	12.4
4.	1.3	4.5	-4.5	---		5	2		9.7	21.1	28.8
5.	4.4	6.6	4.1	7.7	ri		0		8.0	17.0	23.7
6.	2.7	4.6	1.4	3.3	sl		0		5.6	9.8	12.9
7.	2.9	3.9	2.2	---			0		4.4	9.3	11.8
8.	2.2	4.2	0.7	0.4	sl		0		3.9	7.2	10.3
9.	2.8	4.5	1.1	0.8	sl		0		8.8	14.9	20.1
10.	3.0	6.2	1.1	12.7	sl		0		8.0	17.0	21.1
11.	1.4	2.5	0.2	7.6	sl	1	2		6.1	11.3	14.4
12.	-0.4	2.2	-2.6	---		0	2		5.4	11.3	16.0
13.	5.3	7.5	-0.8	9.3	sl		0		8.1	13.4	17.5
14.	1.5	5.5	0.6	4.5	sl		0		6.2	13.9	19.0
15.	-3.2	3.6	-4.4	1.0	sl		0		6.4	12.9	16.5
16.	1.2	2.0	-6.2	0.0			0		6.7	13.4	19.0
17.	4.7	6.2	2.0	0.2	sl		0		11.6	16.0	22.7
18.	7.0	7.7	4.9	0.4	ri		0		11.2	14.4	21.1
19.	7.6	8.8	6.5	14.3	ri		0		10.3	14.9	20.6
20.	2.9	8.6	1.7	6.7	sl		0		11.0	20.1	25.7
21.	3.3	4.6	0.3	2.0	sl		0		10.5	18.5	24.7
22.	4.1	5.6	2.7	1.7	sl		0		12.0	17.5	23.7
23.	2.2	5.6	0.3	2.4	sl		0		11.6	18.0	23.7
24.	-0.2	1.9	-1.7	0.0			0		6.6	13.4	16.5
25.	-0.3	4.4	-3.3	---			0		4.4	9.3	12.4
26.	2.0	3.4	0.4	0.3	sl		0		2.4	5.7	7.2
27.	0.1	3.4	-1.1	---			0		3.3	8.8	10.8
28.	3.3	4.3	-1.1	0.2	ri		0		3.3	8.2	10.8
29.	2.2	3.8	1.4	2.7	ri		0		12.0	18.5	24.7
30.	2.8	3.8	2.0	3.5	sl		0		9.4	14.9	22.1



Meðalhiti	=	2.2 °C
Frávik frá meðaltali 1931-60	=	-0.6 °C
Meðalhámarkshiti	=	4.5 °C
Meðallágmarkshiti	=	0.1 °C
Úrkomumagn	=	81.8 mm
Hlutfall úrkomu af meðaltali 1931-60	=	70.0 %
Meðalvindhraði	=	7.7 m/s