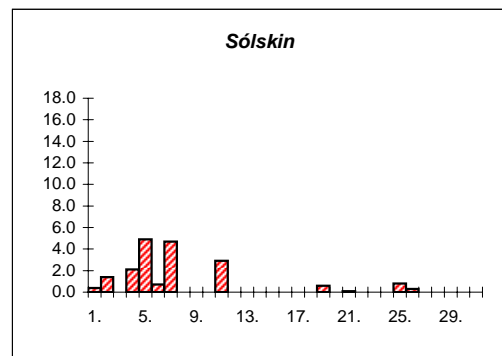
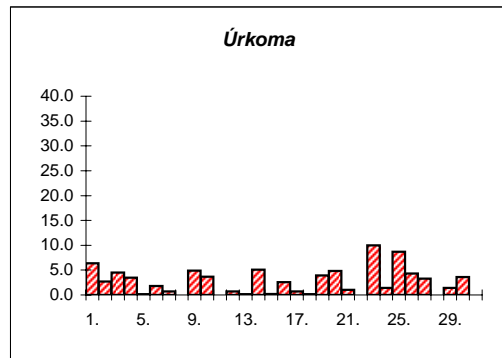
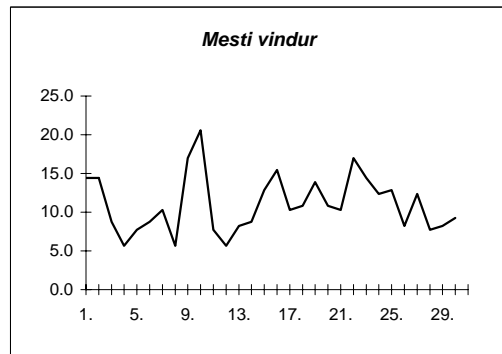
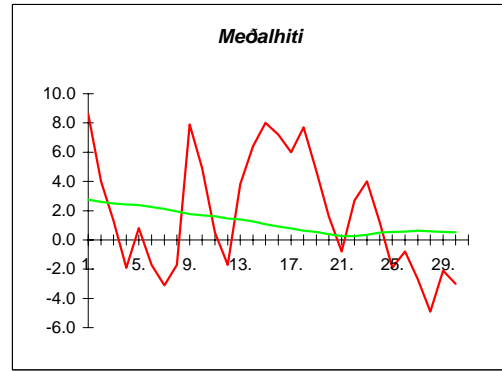


Reykjavík nóvember 2001

Dags	Meðalhiti (°C)	Hámark (°C)	Lágmark (°C)	Úrkoma (mm)	Úrkomutegund	Snjódýpt (cm)	Snjóhula (0-4)	Sólskin(klst)	Meðalvindur (m/s)	Mesti vindur (m/s)	Hviða (m/s)
1.	8.6	11.9	1.0	6.4	ri		0	0.4	9.8	14.4	24.2
2.	4.0	11.2	1.5	2.7	sl		0	1.4	10.3	14.4	22.1
3.	1.3	4.3	-0.1	4.5	sl	0	2	0.0	3.6	8.8	13.4
4.	-1.9	2.4	-5.0	3.5	sl	1	4	2.1	3.3	5.7	7.7
5.	0.8	3.5	-0.9	0.1	sl	4	4	4.9	3.8	7.7	12.9
6.	-1.7	3.7	-4.6	1.8	sn	3	4	0.7	3.1	8.8	12.4
7.	-3.1	-0.9	-6.0	0.7	sn	3	4	4.7	4.5	10.3	18.5
8.	-1.7	0.7	-7.3	- - -		2	4	0.0	2.9	5.7	9.3
9.	7.9	10.4	0.3	4.9	ri		0	0.0	9.3	17.0	24.2
10.	4.9	9.2	4.6	3.7	ri		0	0.0	12.5	20.6	31.4
11.	0.5	5.0	-1.5	0.0			0	2.9	4.2	7.7	14.4
12.	-1.7	2.0	-4.0	0.7	sn	2	4	0.0	3.8	5.7	8.2
13.	3.8	6.4	-2.4	0.1	sn	0	2	0.0	4.5	8.2	13.4
14.	6.4	10.5	5.6	5.1	ri		0	0.0	4.7	8.8	12.4
15.	8.0	9.8	3.6	0.2	ri		0	0.0	7.3	12.9	17.5
16.	7.2	10.5	4.9	2.6	ri		0	0.0	11.4	15.4	23.7
17.	6.0	6.5	4.5	0.7	ri		0	0.0	5.0	10.3	14.9
18.	7.7	7.8	5.1	0.1	ri		0	0.0	5.9	10.8	14.4
19.	4.7	8.5	2.3	3.9	ri		0	0.6	7.2	13.9	20.6
20.	1.6	3.6	0.3	4.8	sl	2	4	0.0	6.3	10.8	17.0
21.	-0.8	3.3	-2.0	1.0	sn	2	4	0.1	4.9	10.3	16.0
22.	2.7	4.0	-3.6	0.0		1	2	0.0	7.5	17.0	26.3
23.	4.0	9.6	2.3	10.0	ri		0	0.0	7.9	14.4	21.6
24.	1.2	4.2	0.2	1.4	sl	0	2	0.0	6.6	12.4	20.1
25.	-1.9	1.4	-3.0	8.7	sn	7	4	0.8	7.2	12.9	21.1
26.	-0.8	1.8	-5.4	4.3	sn	3	4	0.3	4.1	8.2	17.0
27.	-2.7	0.8	-4.0	3.3	sn	11	4	0.0	7.3	12.4	20.1
28.	-4.9	-2.3	-9.0	0.0		8	4	0.0	4.0	7.7	12.9
29.	-2.1	-0.7	-5.4	1.4	sn	9	4	0.0	4.1	8.2	14.4
30.	-3.0	2.3	-4.5	3.6	sn	14	4	0.0	4.8	9.3	14.4
31.											

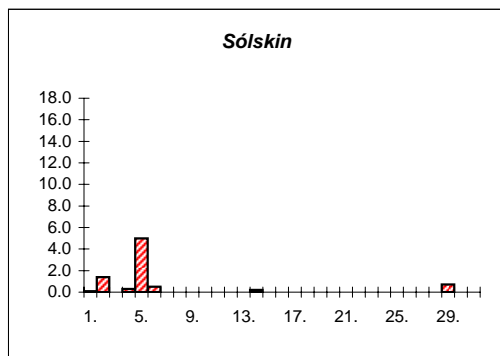
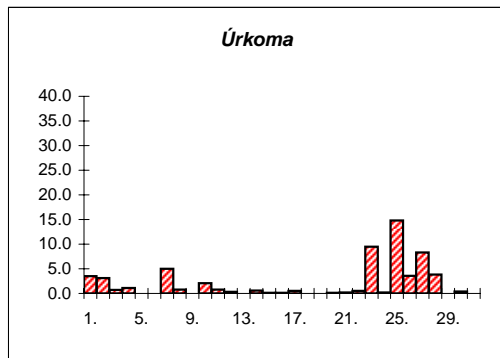
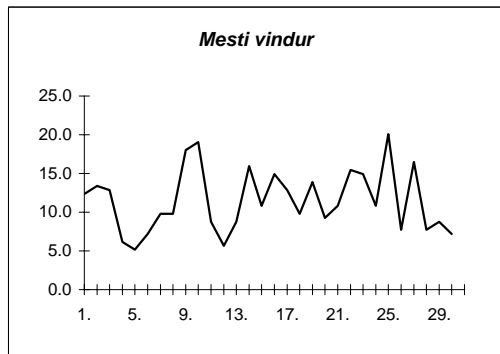
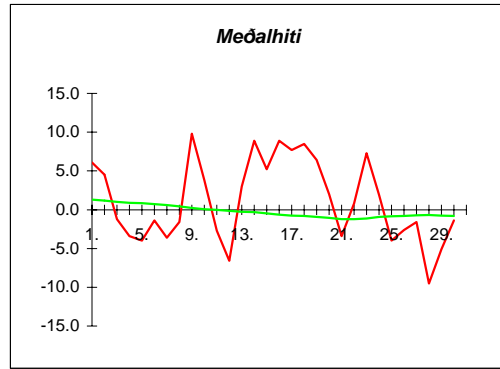


Meðalhiti	=	1.8 °C
Frávik frá meðaltali 1931-60	=	-0.8 °C
Meðalhámarkshiti	=	5.1 °C
Meðallágmarkshiti	=	-1.1 °C
Úrkomumagn	=	80.2 mm
Hlutfall úrkomu af meðaltali 1931-60	=	94.0 %
Meðalvindhraði	=	6.1 m/s
Sólskinsstundir	=	18.9 klst

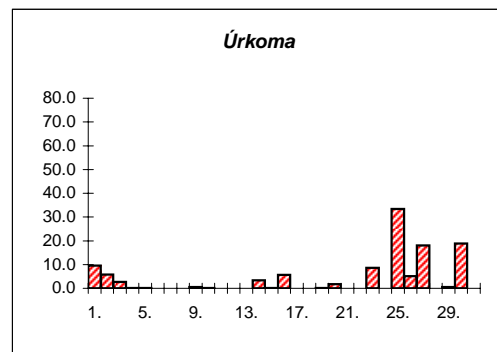
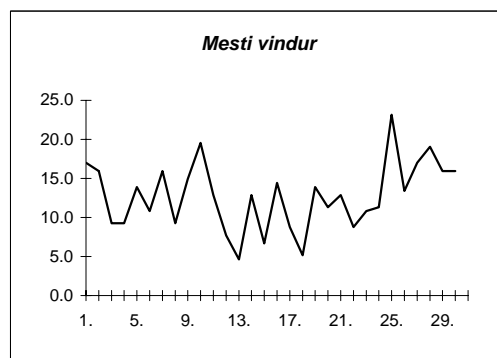
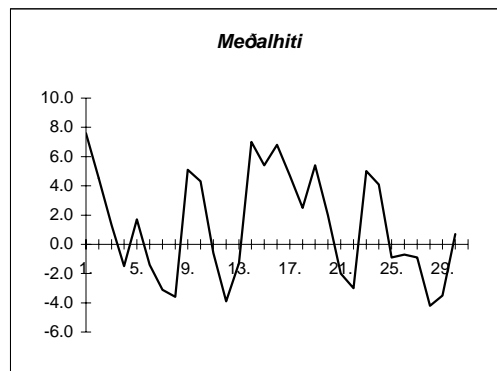
Akureyri nóvember 2001

Dags	Meðalhiti (°C)	Hámark (°C)	Lágmark (°C)	Úrkoma (mm)	Úrkomutegund	Snjódýpt (cm)	Snjöhula (0-4)	Sólskin(klst)	Meðalvindur (m/s)	Mesti vindur (m/s)	Hviða (m/s)
1.	6.1	12.8	-2.6	3.5	ri		0	0.1	6.1	12.4	26.8
2.	4.5	12.4	3.0	3.1	ri		0	1.4	7.5	13.4	26.3
3.	-1.2	4.4	-1.7	0.7	sl	1	2	0.0	3.2	12.9	19.0
4.	-3.4	-1.6	-4.9	1.1	sn	3	2	0.3	3.5	6.2	10.3
5.	-4.0	-2.3	-6.0	---		3	2	5.0	3.0	5.1	7.7
6.	-1.4	0.0	-5.1	---		3	2	0.5	4.1	7.2	13.9
7.	-3.6	-1.0	-4.8	5.0	sn	10	4	0.0	5.5	9.8	14.9
8.	-1.6	1.0	-7.5	0.8	sn	8	4	0.0	5.6	9.8	19.6
9.	9.8	15.7	0.7	0.0			0	0.0	9.6	18.0	30.9
10.	3.8	15.4	3.2	2.1	sl	1	2	0.0	11.3	19.0	43.2
11.	-2.7	3.6	-4.5	0.8	sl	3	4	0.0	3.1	8.8	14.9
12.	-6.6	-3.3	-9.3	0.3	sn	3	4	0.0	3.0	5.7	7.7
13.	3.0	4.2	-6.3	---		3	2	0.0	5.7	8.8	14.4
14.	8.9	15.3	2.9	0.6	ri		0	0.2	8.5	16.0	29.9
15.	5.2	8.5	2.0	0.1	ri		0	0.0	4.3	10.8	19.6
16.	8.9	14.0	7.2	0.1	ri		0	0.0	8.4	14.9	26.3
17.	7.7	9.5	6.2	0.5	sl		0	0.0	5.8	12.9	26.8
18.	8.5	9.6	6.2	0.0			0	0.0	7.7	9.8	18.0
19.	6.4	9.5	5.0	0.0			0	0.0	6.5	13.9	21.6
20.	2.0	5.2	1.8	0.1	ri		0	0.0	3.8	9.3	16.0
21.	-3.4	2.4	-4.6	0.2	sn	1	2	0.0	4.6	10.8	16.0
22.	0.8	5.4	-7.0	0.5	sn	4	4	0.0	7.1	15.4	23.7
23.	7.3	13.7	1.7	9.5	ri		0	0.0	8.0	14.9	23.2
24.	1.9	5.2	0.1	0.2	sl		0	0.0	6.5	10.8	20.6
25.	-4.0	1.4	-5.5	14.8	sl	8	4	0.0	11.1	20.1	29.9
26.	-2.6	-1.2	-7.8	3.6	sn	9	4	0.0	3.2	7.7	13.4
27.	-1.6	3.5	-4.1	8.3	sl	7	4	0.0	10.3	16.5	23.7
28.	-9.5	-4.1	-11.0	3.8	sn	16	4	0.0	3.5	7.7	11.3
29.	-5.1	-2.8	-11.7	---		16	4	0.7	3.9	8.8	17.5
30.	-1.4	2.0	-5.5	0.4	sn	18	4	0.0	3.9	7.2	12.9
31.											

Meðalhiti	=	1.1 °C
Frávik frá meðaltali 1931-60	=	-0.2 °C
Meðalhámarkshiti	=	5.3 °C
Meðallágmarkshiti	=	-2.3 °C
Úrkomumagn	=	60.1 mm
Hlutfall úrkomu af meðaltali 1931-60	=	134.0 %
Meðalvindhraði	=	5.9 m/s
Sólskinsstundir	=	8.2 klst



Dags	Meðalhiti (°C)	Hámark (°C)	Lágmark (°C)	Úrkoma (mm)	Úrkomutegund	Snjódýpt (cm)	Snjöhula (0-4)	Sólskin(klást)	Meðalvindur (m/s)	Mesti vindur (m/s)	Hviða (m/s)
1.	7.6	9.9	-0.7	9.6	sl		0		7.7	17.0	
2.	4.5	10.2	2.0	5.8	ri		0		8.6	16.0	
3.	1.3	4.4	-0.3	2.7	ri		0		4.8	9.3	
4.	-1.5	1.5	-5.2	0.2	sl	3	4		4.0	9.3	
5.	1.7	3.3	-5.1	0.2	sl	2	4		9.8	13.9	
6.	-1.4	3.0	-2.8	0.0			0		5.1	10.8	
7.	-3.1	0.5	-4.5	---			0		6.7	16.0	
8.	-3.6	-1.0	-6.7	---			0		3.8	9.3	
9.	5.1	7.5	-3.5	0.5	ri		0		5.4	14.9	
10.	4.3	9.0	3.2	0.1	ri		0		12.6	19.6	
11.	-0.6	4.7	-2.3	---			0		6.1	12.9	
12.	-3.9	0.0	-6.6	---			0		2.4	7.7	
13.	-1.3	1.0	-6.5	0.0			0		2.7	4.6	
14.	7.0	9.3	-0.8	3.3	ri		0		3.9	12.9	
15.	5.4	10.4	2.8	0.2	ri		0		2.1	6.7	
16.	6.8	9.0	2.6	5.6	ri		0		8.9	14.4	
17.	4.7	7.5	2.2	0.0			0		4.0	8.8	
18.	2.5	5.2	0.1	---			0		3.0	5.1	
19.	5.4	8.4	-0.4	0.2	ri		0		7.2	13.9	
20.	2.0	5.9	1.2	1.7	ri		0		6.9	11.3	
21.	-2.0	2.8	-4.3	0.0			0		6.7	12.9	
22.	-3.0	-1.0	-8.4	---			0		3.1	8.8	
23.	5.0	8.4	-2.0	8.6	sl		0		6.1	10.8	
24.	4.1	6.2	1.2	0.0			0		6.9	11.3	
25.	-0.9	9.1	-2.8	33.4	ri		0		10.0	23.2	
26.	-0.7	2.7	-7.3	5.1	sn	7	4		4.7	13.4	
27.	-0.9	4.7	-2.5	18.1	sl	7	4		8.4	17.0	
28.	-4.2	2.6	-6.7	0.0		3	4		8.2	19.0	
29.	-3.5	-1.4	-7.5	0.5	sn	2	4		6.2	16.0	
30.	0.7	3.5	-6.4	18.8	sl	2	4		5.4	16.0	
31.											

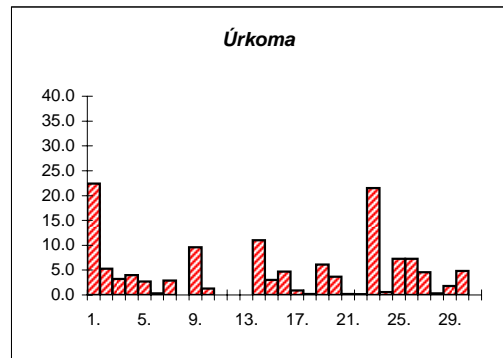
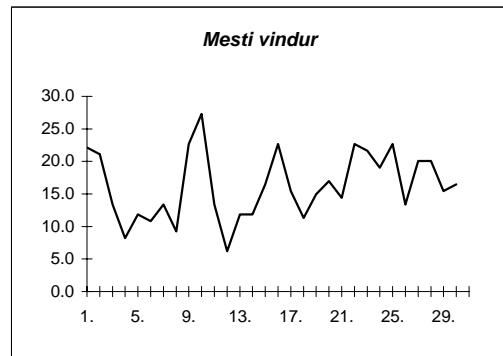
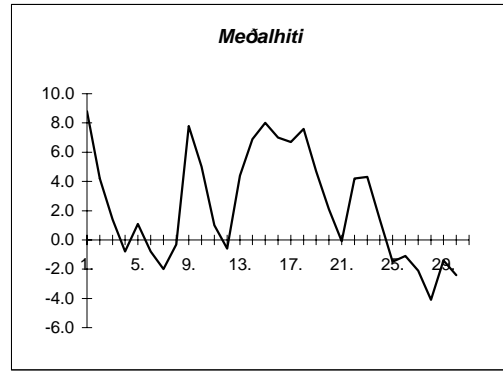


Meðalhiti	=	1.2 °C
Meðalhámarkshiti	=	4.9 °C
Meðallágmarkshiti	=	-2.6 °C
Úrkomumagn	=	114.6 mm
Meðalvindhraði	=	6.0 m/s

Útgefandi : **Veðurstofa Íslands**  
 Heimilisfang : **Bústaðavegur 9**  
**150 Reykjavík**

Keflavík nóvember 2001

Dags	Meðalhiti (°C)	Hámark (°C)	Lágmark (°C)	Úrkoma (mm)	Úrkomutegund	Snjódýpt (cm)	Snjóhula (0-4)	Sólskin(klst)	Meðalvindur (m/s)	Mesti vindur (m/s)	Hviða (m/s)
1.	8.8	11.9	2.6	22.4	sl		0		12.9	22.1	27.8
2.	4.2	9.1	0.4	5.3	sl		0		16.7	21.1	25.7
3.	1.4	5.2	-1.3	3.2	sl	1	2		7.8	13.4	18.0
4.	-0.8	3.2	-3.4	4.0	sl	1	2		4.0	8.2	10.8
5.	1.1	4.2	-0.3	2.7	sl	4	2		6.1	11.8	15.4
6.	-0.8	2.0	-3.2	0.3	sl	4	2		4.8	10.8	12.4
7.	-2.0	1.0	-3.6	2.9	sn	5	4		6.7	13.4	17.0
8.	-0.3	1.1	-3.9	0.0		4	4		5.6	9.3	13.4
9.	7.8	10.4	0.5	9.6	ri		0		13.5	22.7	29.9
10.	5.0	10.3	4.6	1.3	ri		0		19.4	27.3	35.0
11.	1.0	4.7	0.3	- - -			0		5.8	13.4	17.5
12.	-0.6	2.0	-3.5	0.0			2		3.5	6.2	8.8
13.	4.4	6.6	-1.4	0.0			2		7.4	11.8	17.0
14.	6.9	9.4	5.6	11.0	ri		0		7.9	11.8	15.4
15.	8.0	10.7	4.0	3.0	ri		0		9.7	16.5	20.6
16.	7.0	9.7	4.9	4.7	ri		0		15.0	22.7	28.3
17.	6.7	9.9	4.6	0.9	sl		0		8.8	15.4	20.6
18.	7.6	8.6	5.9	0.2	ri		0		7.7	11.3	17.0
19.	4.7	9.4	2.8	6.1	ri		0		9.5	14.9	20.6
20.	2.1	3.2	0.1	3.7	sl	1	2		10.3	17.0	20.6
21.	-0.1	2.6	-1.3	0.2	sn	2	2		7.6	14.4	20.6
22.	4.2	7.5	-3.0	0.1	sn		0		11.4	22.7	31.9
23.	4.3	10.1	1.7	21.5	ri		0		15.1	21.6	30.4
24.	1.4	4.6	0.2	0.6	sl		0		8.7	19.0	23.7
25.	-1.5	1.9	-3.7	7.3	sl	6	4		10.7	22.7	24.7
26.	-1.1	3.4	-4.6	7.3	sl	9	4		5.1	13.4	19.6
27.	-2.1	0.7	-4.8	4.6	sn	6	4		12.3	20.1	25.7
28.	-4.1	-0.5	-9.7	0.3	sn	7	4		6.6	20.1	24.7
29.	-1.4	1.2	-3.9	1.8	sn	8	4		5.9	15.4	19.6
30.	-2.4	0.7	-3.5	4.8	sn	8	4		8.4	16.5	19.6
31.											



Meðalhiti	=	2.3 °C
Frávik frá meðaltali 1931-60	=	-0.5 °C
Meðalhámarkshiti	=	5.5 °C
Meðallágmarkshiti	=	-0.6 °C
Úrkomumagn	=	129.8 mm
Hlutfall úrkomu af meðaltali 1931-60	=	111.0 %
Meðalvindhraði	=	9.2 m/s