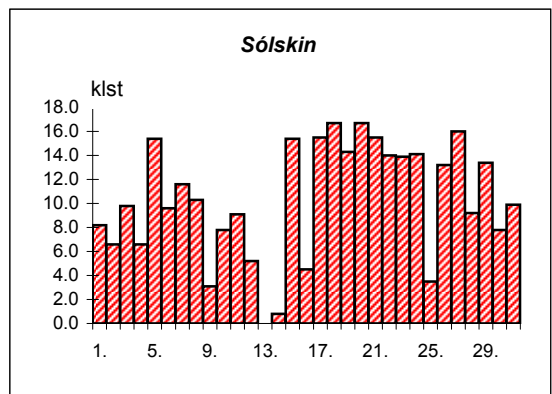
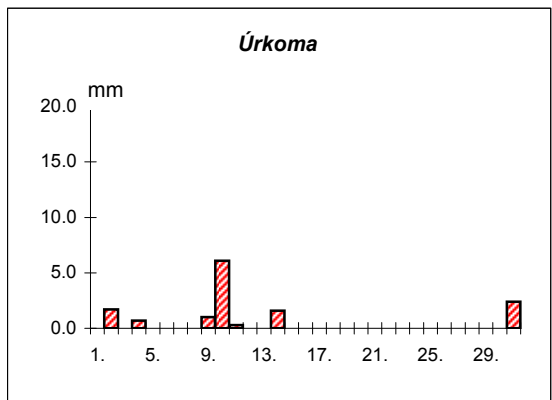
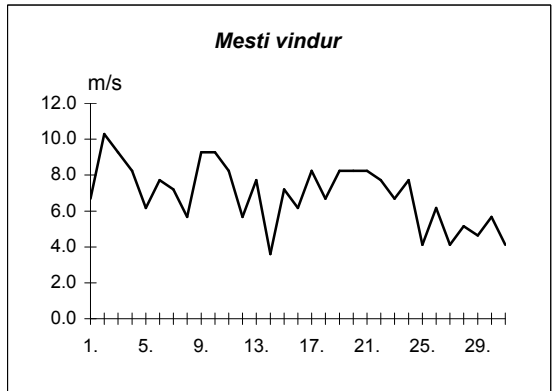
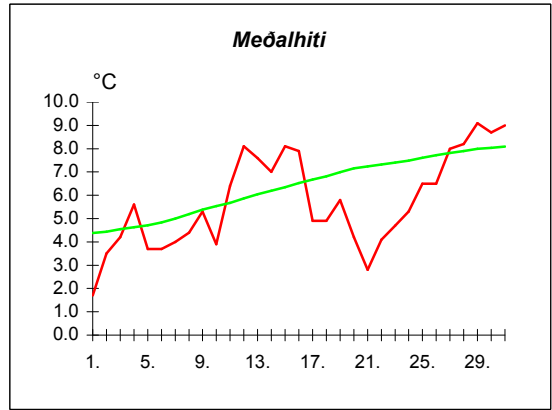
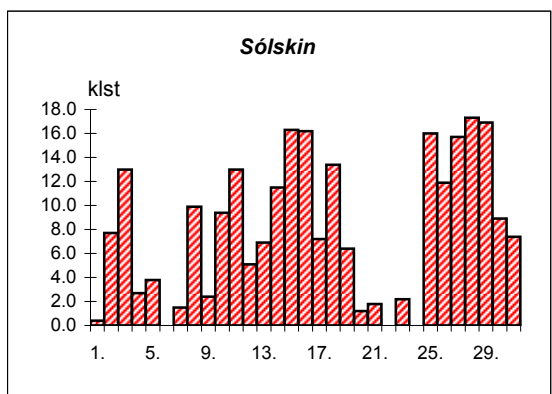
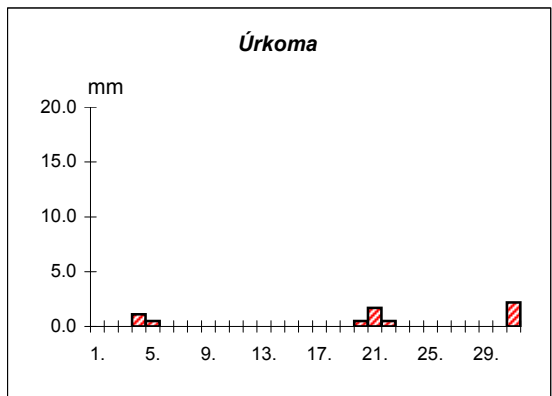
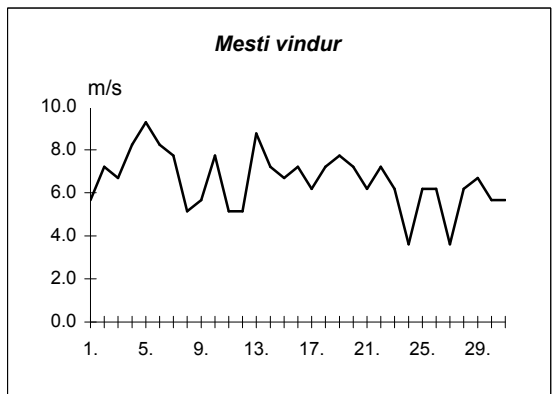
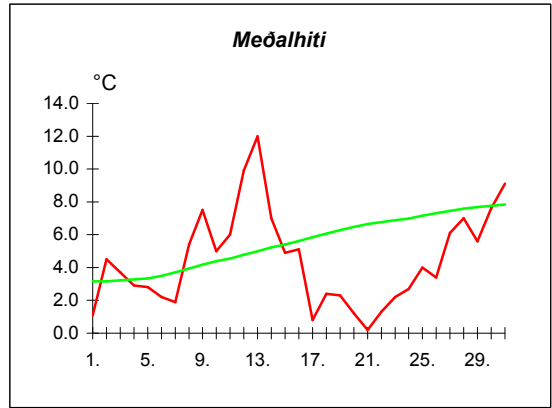


Dags	Meðalhiti (°C)	Hámark (°C)	Lágmark (°C)	Úrkoma (mm)	Úrkomutegund	Snjódýpt (cm)	Snjóhula (0-4)	Sólskin(klst)	Meðalvindur (m/s)	Mesti vindur (m/s)	Hviða (m/s)
1.	1.7	5.6	-3.2	---			0	8.2	3.1	6.7	10.3
2.	3.5	4.7	2.5	1.7	sl		0	6.6	7.7	10.3	14.4
3.	4.2	7.2	-0.5	0.0			0	9.8	3.8	9.3	12.9
4.	5.6	7.4	5.0	0.7	ri		0	6.6	4.1	8.2	12.9
5.	3.7	6.6	-0.3	0.0			0	15.4	3.3	6.2	9.3
6.	3.7	6.7	0.5	---			0	9.6	4.6	7.7	12.4
7.	4.0	7.5	1.7	---			0	11.6	5.5	7.2	11.3
8.	4.4	7.7	-0.5	---			0	10.3	3.3	5.7	8.8
9.	5.3	7.5	3.7	1.0	ri		0	3.1	4.3	9.3	12.9
10.	3.9	7.0	1.3	6.1	sl		0	7.8	4.8	9.3	13.9
11.	6.4	9.8	1.8	0.3	sl		0	9.1	4.5	8.2	11.8
12.	8.1	11.7	3.4	---			0	5.2	2.9	5.7	8.2
13.	7.6	11.0	7.2	0.0			0	0.0	4.3	7.7	11.3
14.	7.0	8.4	6.2	1.6	ri		0	0.8	2.3	3.6	5.7
15.	8.1	12.1	4.9	0.0			0	15.4	3.6	7.2	9.8
16.	7.9	10.0	6.1	---			0	4.5	3.8	6.2	8.8
17.	4.9	9.2	3.2	---			0	15.5	3.8	8.2	12.9
18.	4.9	8.2	-1.5	---			0	16.7	2.6	6.7	9.8
19.	5.8	9.7	1.6	---			0	14.3	4.1	8.2	12.4
20.	4.2	9.0	-0.8	---			0	16.7	4.8	8.2	14.9
21.	2.8	7.4	-0.5	---			0	15.5	5.1	8.2	13.9
22.	4.1	8.5	-1.5	0.0			0	14.0	3.7	7.7	11.8
23.	4.7	9.0	0.0	---			0	13.9	3.1	6.7	10.3
24.	5.3	9.0	-0.8	---			0	14.1	3.8	7.7	10.3
25.	6.5	9.1	4.6	---			0	3.5	2.5	4.1	6.2
26.	6.5	9.5	2.7	---			0	13.2	2.9	6.2	8.8
27.	8.0	11.5	3.0	---			0	16.0	2.3	4.1	6.2
28.	8.2	10.6	5.4	---			0	9.2	2.5	5.1	8.2
29.	9.1	12.1	3.7	0.0			0	13.4	2.2	4.6	5.7
30.	8.7	12.1	7.1	0.0			0	7.8	2.1	5.7	8.2
31.	9.0	12.4	4.8	2.4	ri		0	9.9	2.3	4.1	7.2



Meðalhiti	=	5.7 °C
Frávik frá meðaltali 1931-60	=	-1.2 °C
Meðalhámarkshiti	=	9.0 °C
Meðallágmarkshiti	=	2.3 °C
Úrkomumagn	=	13.8 mm
Hlutfall úrkomu af meðaltali 1931-60	=	33.0 %
Meðalvindhraði	=	3.7 m/s
Sólskinsstundir	=	317.7 klst

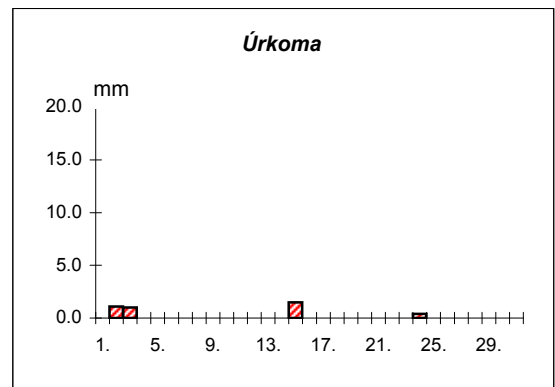
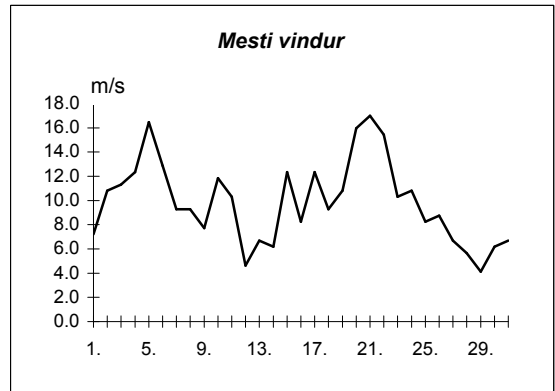
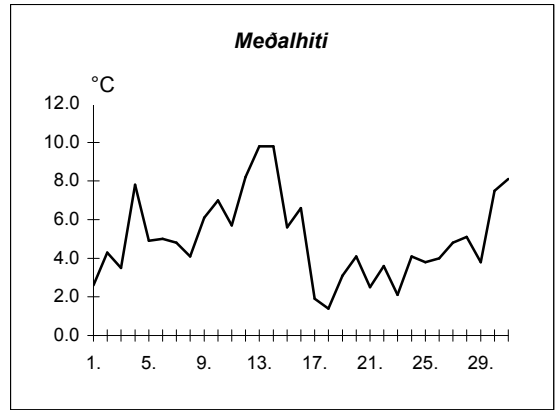
Dags	Meðalhiti (°C)	Hámark (°C)	Lágmark (°C)	Úrkoma (mm)	Úrkomutegund	Snjódýpt (cm)	Snjóhula (0-4)	Sólskin(klst)	Meðalvindur (m/s)	Mesti vindur (m/s)	Hviða (m/s)
1.	1.1	3.0	-1.5	---			0	0.4	2.3	5.7	8.8
2.	4.5	7.5	1.5	---			0	7.7	3.9	7.2	12.4
3.	3.7	6.5	-1.5	---			0	13.0	2.8	6.7	11.3
4.	2.9	7.0	1.4	1.1	ri		0	2.7	4.1	8.2	13.9
5.	2.8	6.0	0.5	0.5	sl		0	3.8	5.2	9.3	15.4
6.	2.2	4.8	0.9	---			0	0.0	5.7	8.2	12.9
7.	1.9	3.5	1.4	0.0			0	1.5	5.5	7.7	12.4
8.	5.4	10.4	-0.2	0.0			0	9.9	2.3	5.1	9.8
9.	7.5	10.5	5.0	---			0	2.4	3.4	5.7	11.3
10.	5.0	10.2	3.5	0.0			0	9.4	3.6	7.7	12.4
11.	6.0	11.0	1.8	0.0			0	13.0	2.3	5.1	7.7
12.	9.9	15.5	4.3	---			0	5.1	2.8	5.1	9.3
13.	12.0	15.4	8.5	---			0	6.9	5.2	8.8	16.0
14.	7.0	15.4	7.0	---			0	11.5	4.4	7.2	10.3
15.	4.9	8.3	2.4	0.0			0	16.3	2.4	6.7	10.3
16.	5.1	10.6	-1.0	---			0	16.2	3.5	7.2	11.3
17.	0.8	8.1	0.2	0.0			0	7.2	3.6	6.2	10.3
18.	2.4	8.0	-4.5	0.0			0	13.4	3.4	7.2	10.3
19.	2.3	5.5	0.5	---			0	6.4	3.6	7.7	11.3
20.	1.2	3.0	0.6	0.5	sl		0	1.2	4.5	7.2	11.8
21.	0.2	2.0	-1.4	1.7	sn		0	1.8	3.8	6.2	9.3
22.	1.3	3.0	-0.3	0.5	sn		0	0.0	4.1	7.2	10.3
23.	2.2	5.6	-0.1	0.0			0	2.2	3.1	6.2	9.3
24.	2.7	4.8	0.3	0.0			0	0.0	2.0	3.6	7.7
25.	4.0	8.3	-1.2	---			0	16.0	2.9	6.2	8.2
26.	3.4	7.5	-1.2	---			0	11.9	3.2	6.2	10.3
27.	6.1	12.2	-1.0	---			0	15.7	1.5	3.6	6.2
28.	7.0	11.5	2.0	---			0	17.3	3.1	6.2	9.3
29.	5.6	10.5	1.2	---			0	16.9	2.9	6.7	9.3
30.	7.6	12.7	0.6	---			0	8.9	1.6	5.7	9.3
31.	9.1	13.0	4.9	2.2	ri		0	7.4	2.6	5.7	8.8



Meðalhiti	=	4.4 °C
Frávík frá meðaltali 1931-60	=	-1.9 °C
Meðalhámarkshiti	=	8.4 °C
Meðallágmarkshiti	=	1.1 °C
Úrkomumagn	=	6.5 mm
Hlutfall úrkomu af meðaltali 1931-60	=	43.0 %
Meðalvindhraði	=	3.4 m/s
Sólskinsstundir	=	246.1 klst

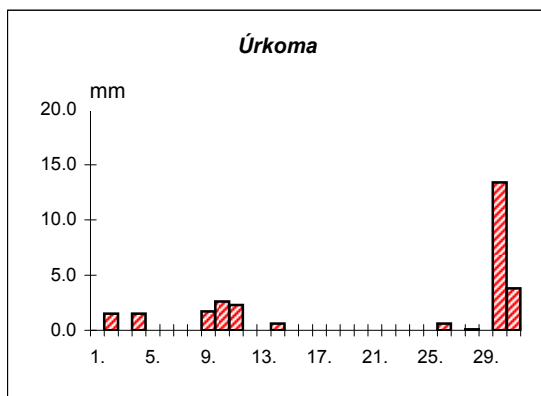
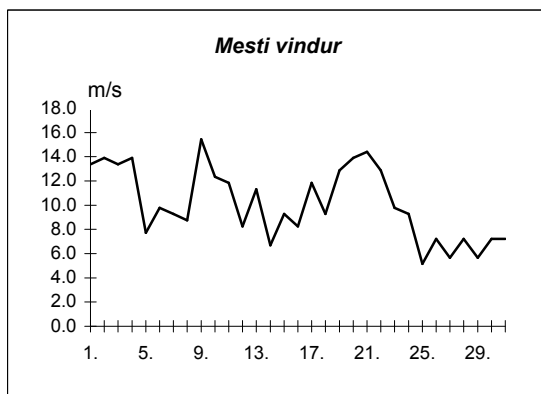
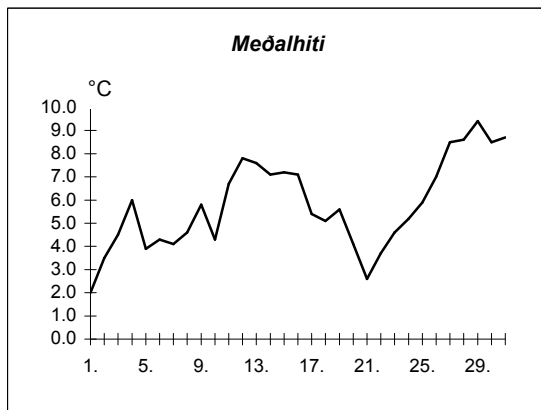
Dags	Meðalhiti (°C)	Hámark (°C)	Lágmark (°C)	Úrkoma (mm)	Úrkomutegund	Snjódypt (cm)	Snjóhula (0-4)	Sólskin(klst)	Meðalvindur (m/s)	Mesti vindur (m/s)	Hviða (m/s)
1.	2.6	5.5	0.9	---			0		2.8	7.2	11.8
2.	4.3	9.4	-1.2	1.1	sl		0		4.8	10.8	15.4
3.	3.5	8.1	-2.1	1.0	ri		0		4.3	11.3	15.4
4.	7.8	14.4	3.1	---			0		4.8	12.4	18.0
5.	4.9	12.2	2.3	---			0		9.3	16.5	21.6
6.	5.0	8.5	3.2	---			0		8.2	12.9	19.6
7.	4.8	8.6	2.9	---			0		6.3	9.3	14.9
8.	4.1	8.2	0.2	---			0		4.6	9.3	12.9
9.	6.1	8.8	0.4	---			0		4.0	7.7	11.3
10.	7.0	10.4	5.4	---			0		5.7	11.8	15.4
11.	5.7	9.1	2.6	---			0		4.7	10.3	14.4
12.	8.2	10.7	4.2	0.0			0		2.3	4.6	6.2
13.	9.8	15.1	6.0	---			0		3.0	6.7	9.8
14.	9.8	13.3	6.7	---			0		3.6	6.2	8.8
15.	5.6	11.2	2.5	1.5	ri		0		6.1	12.4	18.5
16.	6.6	12.0	1.6	---			0		4.4	8.2	10.8
17.	1.9	7.5	-1.3	---			0		6.8	12.4	16.5
18.	1.4	5.9	-1.0	---			0		3.9	9.3	12.4
19.	3.1	8.0	-3.3	0.0			0		5.3	10.8	16.0
20.	4.1	7.2	1.7	0.0			0		8.5	16.0	22.1
21.	2.5	5.5	0.3	0.0			0		10.3	17.0	23.2
22.	3.6	7.3	0.7	---			0		10.0	15.4	24.7
23.	2.1	5.2	-0.2	---			0		4.1	10.3	13.9
24.	4.1	7.6	-0.2	0.4	sl		0		6.3	10.8	17.5
25.	3.8	7.1	1.0	---			0		3.6	8.2	9.8
26.	4.0	8.6	-0.1	---			0		2.6	8.8	14.9
27.	4.8	7.9	-0.6	---			0		3.9	6.7	8.8
28.	5.1	8.4	-0.8	---			0		2.3	5.7	7.7
29.	3.8	7.4	1.7	---			0		2.0	4.1	6.2
30.	7.5	10.8	3.6	---			0		2.5	6.2	8.8
31.	8.1	11.0	2.9	---			0		3.3	6.7	9.8

Meðalhiti	=	5.0 °C
Meðalhámarkshiti	=	9.1 °C
Meðallágmarkshiti	=	1.4 °C
Úrkomumagn	=	4.0 mm
Meðalvindhraði	=	4.9 m/s



Útgefandi : **Veðurstofa Íslands**
 Heimilisfang : **Bústaðavegur 9**
150 Reykjavík

Dags	Meðalhiti (°C)	Hámark (°C)	Lágmark (°C)	Úrkoma (mm)	Úrkomutegund	Snjódýpt (cm)	Snjöhula (0-4)	Sólskín(klst)	Meðalvindur (m/s)	Mesti vindur (m/s)	Hviða (m/s)
1.	2.0	5.4	-1.1	---			0		7.2	13.4	17.0
2.	3.5	5.2	2.7	1.5	sl		0		10.6	13.9	19.0
3.	4.5	7.6	-0.4	0.0			0		5.8	13.4	18.0
4.	6.0	7.5	5.0	1.5	ri		0		8.4	13.9	18.0
5.	3.9	6.9	0.1	0.0			0		5.6	7.7	9.8
6.	4.3	7.0	1.6	---			0		6.9	9.8	12.9
7.	4.1	7.1	1.6	---			0		7.4	9.3	11.8
8.	4.6	8.2	-0.1	---			0		4.6	8.8	11.3
9.	5.8	8.3	3.7	1.7	ri		0		7.5	15.4	16.0
10.	4.3	8.0	2.2	2.6	sl		0		7.2	12.4	16.5
11.	6.7	9.8	2.4	2.3	sl		0		7.4	11.8	17.5
12.	7.8	10.6	3.3	---			0		5.0	8.2	12.4
13.	7.6	9.9	7.2	0.0			0		7.5	11.3	13.9
14.	7.1	8.4	6.4	0.6	ri		0		5.1	6.7	9.3
15.	7.2	10.6	4.3	0.0			0		5.9	9.3	12.4
16.	7.1	9.6	3.8	---			0		4.2	8.2	10.3
17.	5.4	8.7	4.3	0.0			0		7.1	11.8	16.0
18.	5.1	8.7	0.1	---			0		5.9	9.3	11.3
19.	5.6	9.6	2.1	---			0		7.5	12.9	15.4
20.	4.1	7.6	0.0	---			0		9.2	13.9	18.0
21.	2.6	6.3	0.3	---			0		11.3	14.4	19.0
22.	3.7	7.3	0.8	---			0		9.7	12.9	15.4
23.	4.6	8.3	1.3	---			0		7.1	9.8	13.9
24.	5.2	8.6	1.4	---			0		5.8	9.3	11.3
25.	5.9	8.5	3.1	---			0		2.6	5.1	7.7
26.	7.0	9.5	3.7	0.6	ri		0		5.1	7.2	9.3
27.	8.5	11.9	3.1	---			0		3.4	5.7	7.7
28.	8.6	11.1	5.3	0.1	ri		0		3.3	7.2	8.8
29.	9.4	12.4	5.9	0.0			0		3.3	5.7	7.7
30.	8.5	11.8	5.8	13.4	sl		0		3.1	7.2	15.4
31.	8.7	11.8	4.4	3.8	sl		0		4.6	7.2	11.3



Meðalhiti	=	5.8 °C
Frávík frá meðaltali 1931-60	=	-0.7 °C
Meðalhámarkshiti	=	8.8 °C
Meðallágmarkshiti	=	2.7 °C
Úrkomumagn	=	28.1 mm
Hlutfall úrkomu af meðaltali 1931-60	=	47.0 %
Meðalvindhraði	=	6.3 m/s