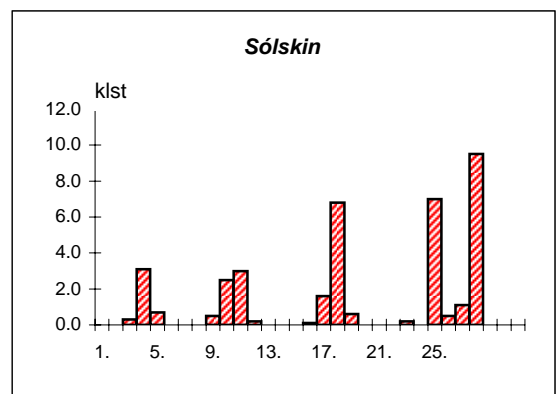
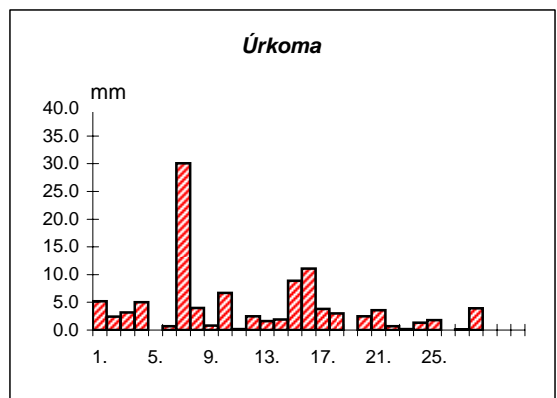
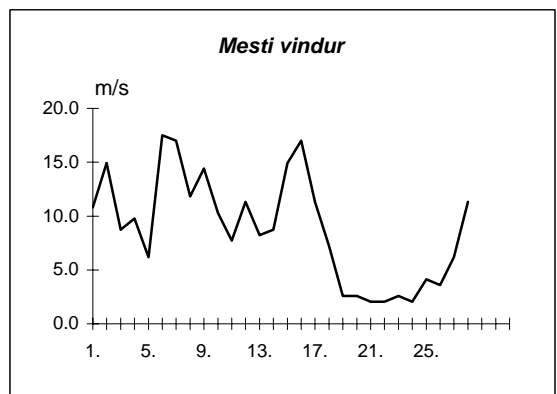
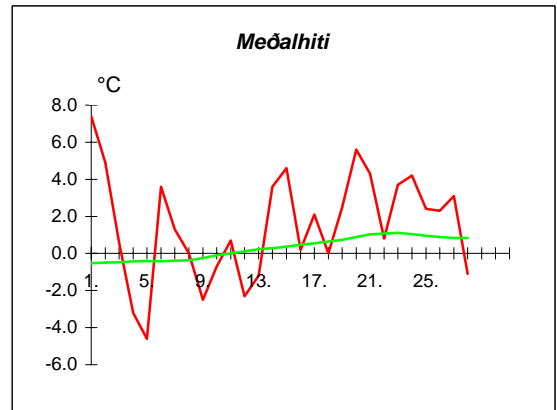
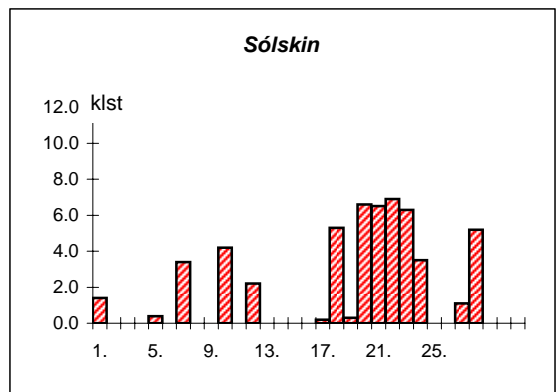
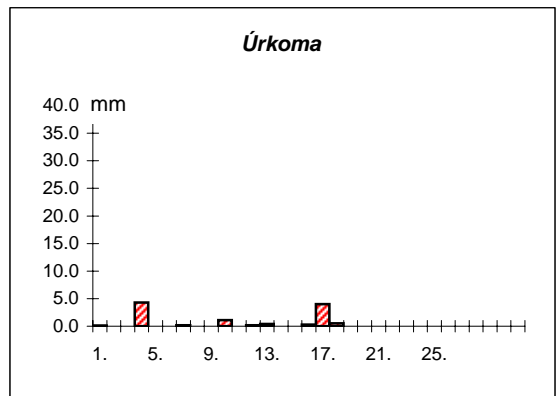
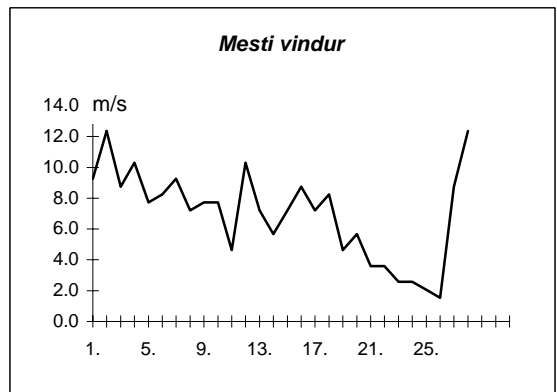
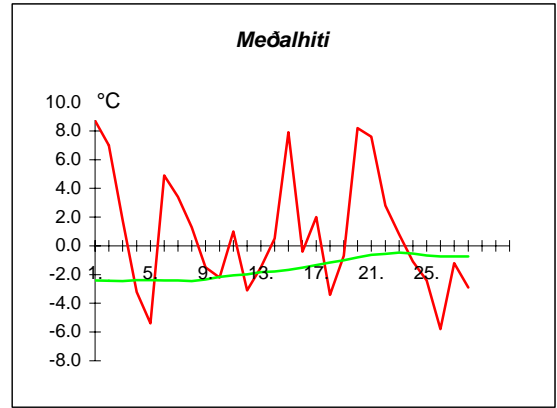


Dags	Meðalhiti (°C)	Hámark (°C)	Lágmark (°C)	Úrkoma (mm)	Úrkomutegund	Snjódýpt (cm)	Snjöhula (0-4)	Sólskin(klst)	Meðalvindur (m/s)	Mesti vindur (m/s)	Hviða (m/s)
1.	7.4	7.7	4.7	5.2	ri		0	0.0	6.3	10.8	18.0
2.	4.9	8.5	2.4	2.4	ri		0	0.0	9.2	14.9	21.6
3.	0.6	4.4	0.0	3.2	sl		0	0.3	2.4	8.8	13.9
4.	-3.2	0.4	-4.3	5.0	sn	5	4	3.1	4.7	9.8	15.4
5.	-4.6	-2.6	-8.8	---		3	4	0.7	2.6	6.2	9.8
6.	3.6	5.0	-3.6	0.7	sl	1	2	0.0	9.6	17.5	27.8
7.	1.3	4.7	0.0	30.1	sl	2	4	0.0	7.9	17.0	24.7
8.	0.0	1.9	-1.6	4.0	sn	8	4	0.0	5.6	11.8	17.5
9.	-2.5	1.2	-3.9	0.8	sn	3	4	0.5	7.3	14.4	21.1
10.	-0.7	1.8	-4.5	6.7	sn	10	4	2.5	4.8	10.3	16.0
11.	0.7	2.2	-0.6	0.2	sn	9	4	3.0	3.1	7.7	9.3
12.	-2.3	1.0	-4.1	2.5	sl	10	4	0.2	6.6	11.3	19.0
13.	-1.2	-0.2	-4.9	1.6	sn	9	4	0.0	3.9	8.2	13.4
14.	3.6	6.4	-1.6	1.9	sn	9	4	0.0	5.1	8.8	13.4
15.	4.6	6.7	4.5	8.9	ri		2	0.0	6.1	14.9	21.1
16.	0.2	5.4	-2.5	11.1	sl	2	4	0.1	10.3	17.0	27.8
17.	2.1	3.9	1.1	3.8	sl		2	1.6	7.2	11.3	20.6
18.	0.0	3.8	-3.9	3.0	sl		2	6.8	2.3	7.2	11.3
19.	2.5	4.5	-0.5	---			2	0.6	1.5	2.6	3.6
20.	5.6	6.7	3.1	2.5	ri		0	0.0	1.5	2.6	3.6
21.	4.3	6.0	3.9	3.6	ri		0	0.0	0.9	2.1	2.6
22.	0.8	4.2	0.1	0.7	ri		0	0.0	0.9	2.1	3.1
23.	3.7	7.0	-1.2	0.2	ri		0	0.2	1.2	2.6	4.1
24.	4.2	5.6	3.4	1.3	ri		0	0.0	1.2	2.1	4.1
25.	2.4	4.8	-0.2	1.8	ri		0	7.0	1.8	4.1	6.7
26.	2.3	3.5	1.3	0.0			0	0.5	2.0	3.6	6.2
27.	3.1	5.3	0.4	0.1	sl		0	1.1	3.1	6.2	9.3
28.	-1.1	4.5	-2.8	3.9	sl		0	9.5	4.7	11.3	17.5



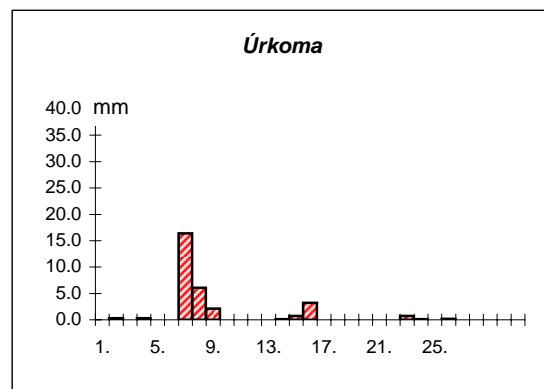
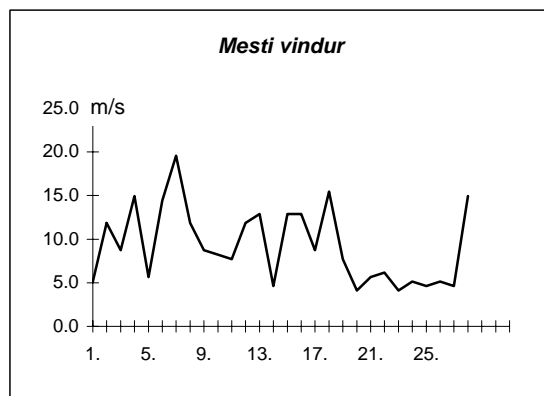
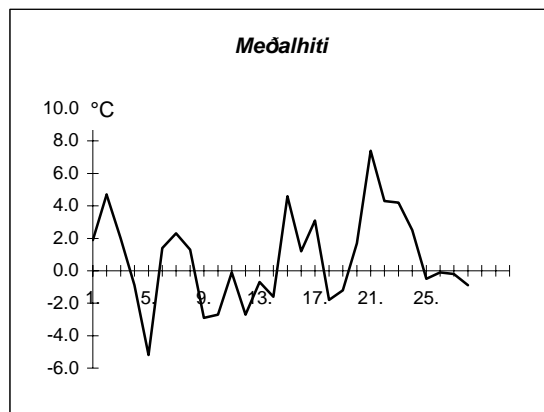
Meðalhiti	=	1.5 °C
Frávik frá meðaltali 1931-60	=	1.6 °C
Meðalhámarkshiti	=	4.1 °C
Meðallágmarkshiti	=	-0.9 °C
Úrkomumagn	=	105.2 mm
Hlutfall úrkomu af meðaltali 1931-60	=	162.0 %
Meðalvindhraði	=	4.4 m/s
Sólskinsstundir	=	37.7 klst

Dags	Meðalhiti (°C)	Hámark (°C)	Lágmark (°C)	Úrkoma (mm)	Úrkomutegund	Snjódýpt (cm)	Snjöhula (0-4)	Sólskin(klst)	Meðalvindur (m/s)	Mesti vindur (m/s)	Hviða (m/s)
1.	8.7	11.5	7.5	0.1	ri		2	1.4	4.0	9.3	16.5
2.	7.0	9.4	5.0	---			0	0.0	5.7	12.4	23.2
3.	1.8	6.1	0.8	0.0			0	0.0	1.7	8.8	17.0
4.	-3.2	1.0	-5.0	4.3	sl	5	4	0.0	5.4	10.3	14.9
5.	-5.4	-2.0	-11.0	0.0			0	0.4	3.8	7.7	12.9
6.	4.9	6.0	-3.0	---			0	0.0	5.7	8.2	14.9
7.	3.4	7.0	2.2	0.2	ri		0	3.4	5.9	9.3	17.5
8.	1.3	3.5	0.9	---			0	0.0	2.8	7.2	12.4
9.	-1.5	1.5	-1.8	0.0			0	0.0	3.3	7.7	14.4
10.	-2.2	0.4	-5.8	1.1	sn	3	4	4.2	3.9	7.7	13.4
11.	1.0	2.2	-2.1	0.0			0	0.0	2.1	4.6	10.8
12.	-3.1	1.3	-4.7	0.2	sn	2	4	2.2	3.8	10.3	13.9
13.	-1.5	-0.5	-5.5	0.4	sn	2	2	0.0	2.8	7.2	11.8
14.	0.5	4.5	-6.2	0.0		2	2	0.0	1.8	5.7	11.8
15.	7.9	11.8	3.8	---			0	0.0	5.2	7.2	16.0
16.	-0.4	7.5	-1.6	0.3	sl		0	0.0	3.5	8.8	14.4
17.	2.0	5.0	-1.6	4.0	sl		2	0.2	3.2	7.2	14.4
18.	-3.4	1.8	-3.6	0.5	sl		0	5.3	2.0	8.2	12.9
19.	-0.7	3.5	-7.5	---			2	0.3	2.5	4.6	10.8
20.	8.2	10.8	3.0	---			2	6.6	2.8	5.7	10.3
21.	7.6	13.3	5.8	---			0	6.5	1.4	3.6	7.7
22.	2.8	9.1	0.5	---			0	6.9	1.1	3.6	4.6
23.	0.8	6.2	-3.0	---			0	6.3	1.3	2.6	4.6
24.	-1.1	2.8	-4.0	---			0	3.5	1.1	2.6	3.6
25.	-2.4	1.6	-2.9	0.0			0	0.0	0.9	2.1	4.1
26.	-5.8	-2.9	-6.5	---			0	0.0	0.7	1.5	2.6
27.	-1.2	5.0	-8.6	0.0			0	1.1	3.2	8.8	14.9
28.	-2.9	5.0	-2.8	0.0			0	5.2	6.2	12.4	16.0



Meðalhiti	=	0.8 °C
Frávik frá meðaltali 1931-60	=	2.4 °C
Meðalhámarkshiti	=	4.7 °C
Meðallágmarkshiti	=	-2.1 °C
Úrkomumagn	=	11.1 mm
Hlutfall úrkomu af meðaltali 1931-60	=	26.0 %
Meðalvindhraði	=	3.1 m/s
Sólskinsstundir	=	53.5 klst

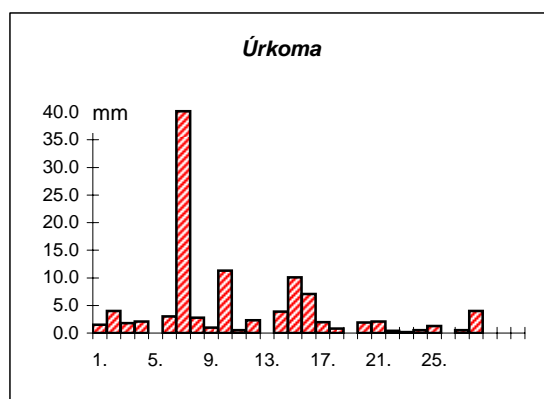
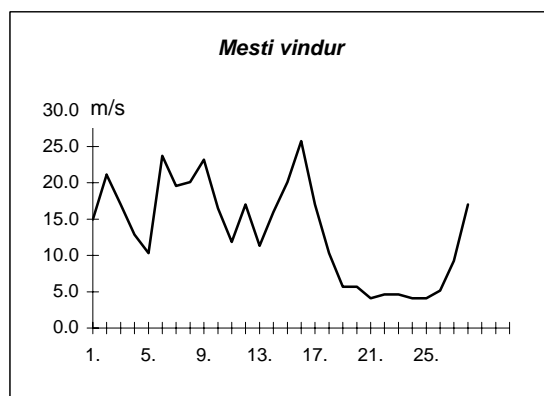
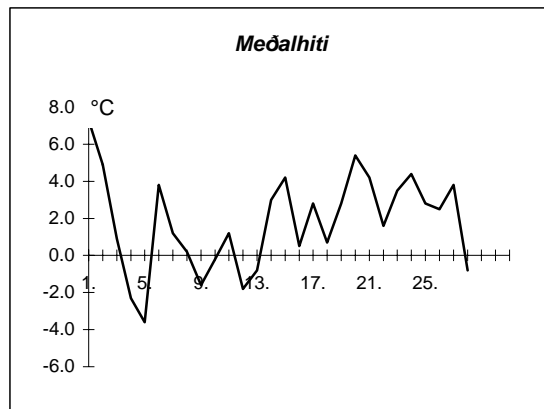
Dags	Meðalhiti (°C)	Hámark (°C)	Lágmark (°C)	Úrkoma (mm)	Úrkomutegund	Snjódýpt (cm)	Snjöhula (0-4)	Sólskin(klst)	Meðalvindur (m/s)	Mesti vindur (m/s)	Hviða (m/s)
1.	1.9	5.7	-1.6	0.0		2	4		2.6	5.1	7.2
2.	4.7	6.6	-1.0	0.3	ri		0		8.4	11.8	18.5
3.	2.0	4.6	1.3	0.0			0		3.4	8.8	13.4
4.	-0.9	2.6	-2.7	0.3	ri		0		6.6	14.9	22.7
5.	-5.2	-1.5	-7.8	---			0		3.0	5.7	10.8
6.	1.4	4.4	-6.8	---			0		5.6	14.4	20.1
7.	2.3	5.3	0.6	16.4	ri		0		6.7	19.6	24.7
8.	1.3	2.9	0.1	6.1	sl	1	4		4.8	11.8	16.0
9.	-2.9	3.7	-4.1	2.1	sl	1	2		3.7	8.8	10.3
10.	-2.7	0.1	-6.7	---		1	2		4.4	8.2	12.9
11.	-0.1	2.6	-5.8	---		1	2		2.1	7.7	8.2
12.	-2.7	1.1	-4.1	---		1	2		5.4	11.8	17.5
13.	-0.7	1.5	-5.7	0.0		1	2		6.1	12.9	19.0
14.	-1.6	0.6	-5.8	0.1	sn	1	2		1.3	4.6	5.7
15.	4.6	6.9	-0.4	0.7	ri		0		4.9	12.9	20.1
16.	1.2	6.8	-0.2	3.2	ri		0		6.9	12.9	17.5
17.	3.1	6.0	-0.7	---			0		4.9	8.8	16.0
18.	-1.8	6.3	-3.2	---			0		5.9	15.4	20.6
19.	-1.2	0.7	-4.8	---			0		3.0	7.7	10.8
20.	1.7	6.7	-2.8	---			0		1.7	4.1	6.2
21.	7.4	12.5	1.0	---			0		2.1	5.7	6.7
22.	4.3	9.2	1.7	0.0			0		2.0	6.2	8.2
23.	4.2	6.0	3.2	0.7	ri		0		2.0	4.1	5.1
24.	2.5	6.4	2.2	0.1	ri		0		2.5	5.1	6.2
25.	-0.5	3.5	-2.9	0.0			0		2.0	4.6	4.1
26.	-0.1	1.4	-0.9	0.2	ri		0		2.8	5.1	6.2
27.	-0.2	2.5	-2.6	---			0		1.5	4.6	6.7
28.	-0.9	2.7	-2.8	---			0		8.0	14.9	21.6



Meðalhiti	=	0.7 °C
Meðalhámarkshiti	=	4.2 °C
Meðallágmarkshiti	=	-2.3 °C
Úrkomumagn	=	30.2 mm
Meðalvindhraði	=	4.1 m/s

Útgefandi : **Veðurstofa Íslands**  
 Heimilisfang : **Bústaðavegur 9**  
**150 Reykjavík**

Dags	Meðalhiti (°C)	Hámark (°C)	Lágmark (°C)	Úrkoma (mm)	Úrkomutegund	Snjóþýpt (cm)	Snjóhula (0-4)	Sólskin(klist)	Meðalvindur (m/s)	Mesti vindur (m/s)	Hviða (m/s)
1.	7.3	7.7	5.1	1.5	ri		0		9.0	14.9	21.1
2.	4.9	7.9	3.4	4.0	ri		0		16.6	21.1	30.9
3.	0.9	4.8	-0.3	1.8	sl		0		3.8	17.0	24.2
4.	-2.3	1.2	-3.1	2.1	sl	2	2		8.6	12.9	17.0
5.	-3.6	-1.5	-7.6	0.0		1	2		5.1	10.3	14.4
6.	3.8	5.7	-2.5	3.0	sl		0		12.0	23.7	32.9
7.	1.2	5.4	0.1	40.2	sl		2		12.9	19.6	24.7
8.	0.2	1.8	-0.6	2.8	sn	3	4		9.0	20.1	24.7
9.	-1.6	2.4	-5.5	1.0	sn	4	4		14.2	23.2	34.0
10.	-0.2	1.7	-4.0	11.3	sn	26	4		9.2	16.5	20.6
11.	1.2	2.5	-1.0	0.5	sn	28	4		5.7	11.8	14.9
12.	-1.8	2.8	-4.3	2.3	sl	28	4		12.6	17.0	23.2
13.	-0.8	1.5	-5.0	0.0		26	4		6.2	11.3	14.4
14.	3.0	4.5	0.2	3.9	sl	20	2		9.9	16.0	22.1
15.	4.2	6.5	3.9	10.1	ri		2		8.9	20.1	27.8
16.	0.5	6.2	-2.3	7.1	sl	2	2		15.9	25.7	32.9
17.	2.8	4.6	1.3	2.0	sl		2		12.0	17.0	22.7
18.	0.7	4.5	-4.2	0.8	sl		2		3.8	10.3	13.9
19.	2.8	4.2	0.1	---			2		3.7	5.7	6.7
20.	5.4	6.7	3.3	1.9	ri		2		3.7	5.7	7.2
21.	4.2	6.7	3.2	2.1	ri		0		1.9	4.1	5.1
22.	1.6	4.9	-0.6	0.4	ri		0		3.1	4.6	5.7
23.	3.5	7.1	-1.1	0.2	ri		0		2.5	4.6	6.7
24.	4.4	6.1	3.4	0.5	ri		0		1.9	4.1	5.1
25.	2.8	5.9	1.5	1.3	ri		0		3.0	4.1	5.7
26.	2.5	4.5	2.1	0.0			0		2.9	5.1	7.2
27.	3.8	6.2	0.6	0.5	ri		0		4.9	9.3	12.4
28.	-0.8	5.9	-2.4	4.0	sl		0		10.3	17.0	21.1



Meðalhiti	=	1.8 °C
Frávik frá meðaltali 1931-60	=	1.5 °C
Meðalhámarkshiti	=	4.6 °C
Meðallágmarkshiti	=	-0.6 °C
Úrkomumagn	=	105.3 mm
Hlutfall úrkomu af meðaltali 1931-60	=	135.0 %
Meðalvindhraði	=	7.6 m/s