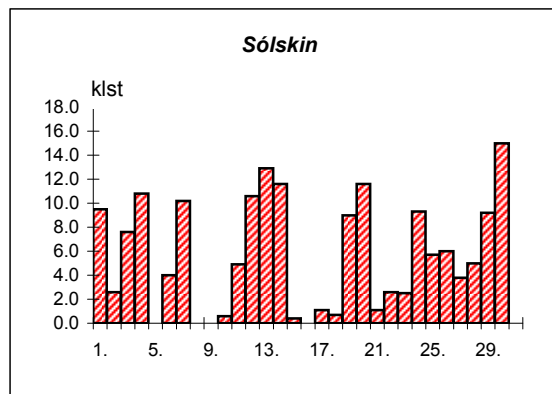
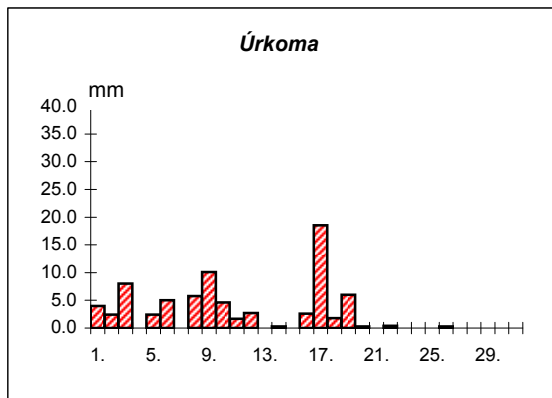
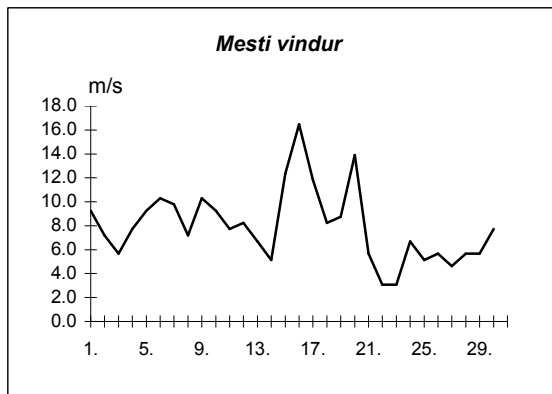
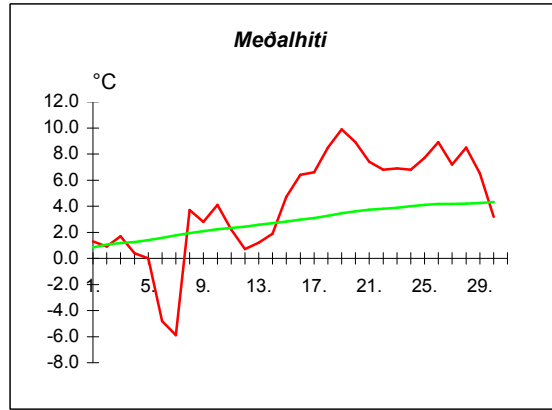
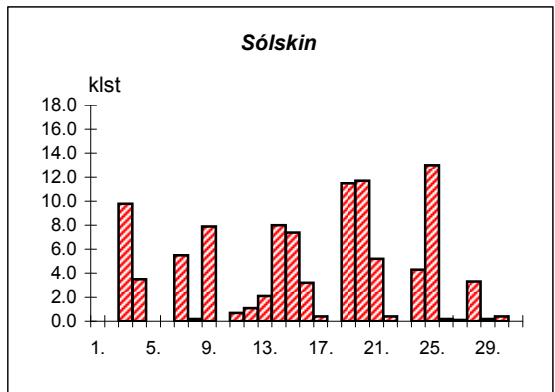
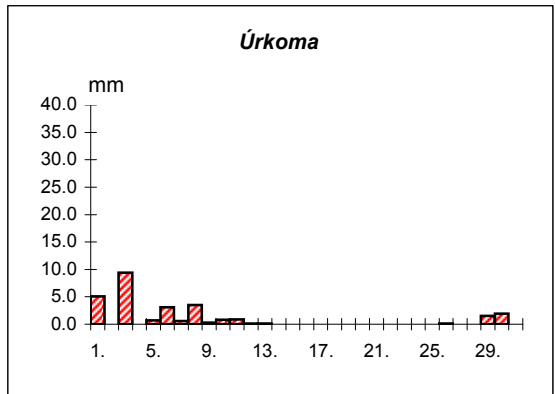
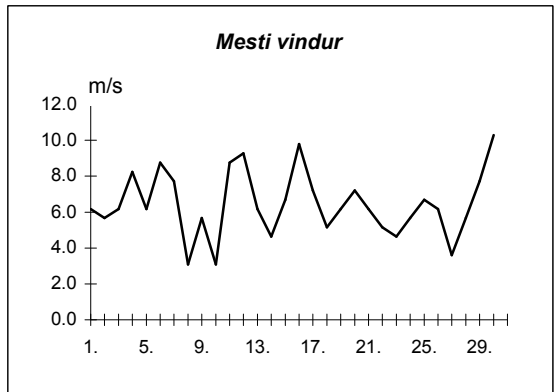
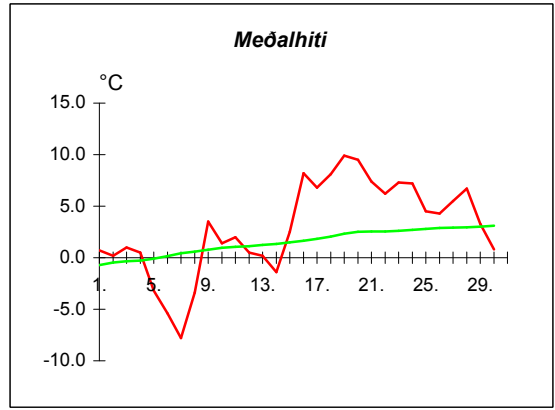


Dags	Meðalhiti (°C)	Hámark (°C)	Lágmark (°C)	Úrkoma (mm)	Úrkomutegund	Snjódýpt (cm)	Snjóhula (0-4)	Sólskin(klst)	Meðalvindur (m/s)	Mesti vindur (m/s)	Hviða (m/s)
1.	1.3	5.7	-2.2	4.0	sl		0	9.5	3.3	9.3	15.4
2.	0.9	4.5	-0.1	2.4	sn		2	2.6	2.6	7.2	9.8
3.	1.7	4.8	0.0	8.0	sn	10	4	7.6	4.1	5.7	9.3
4.	0.4	4.4	-3.1	---			2	10.8	3.1	7.7	11.3
5.	0.0	2.7	-0.8	2.4	sl		2	0.0	4.9	9.3	17.0
6.	-4.8	-0.4	-5.4	5.0	sl		2	4.0	8.8	10.3	17.5
7.	-5.9	-4.0	-8.5	0.0			0	10.2	4.6	9.8	15.4
8.	3.7	5.5	-6.6	5.8	sl		0	0.0	4.9	7.2	10.8
9.	2.8	5.8	1.5	10.1	sl		0	0.0	6.6	10.3	16.0
10.	4.1	7.1	0.3	4.6	sl		0	0.6	4.4	9.3	14.9
11.	2.2	4.2	1.1	1.7	ri		0	4.9	4.4	7.7	12.4
12.	0.7	3.2	-0.7	2.7	sl	4	4	10.6	4.5	8.2	12.4
13.	1.2	5.4	-3.0	---			0	12.9	2.6	6.7	10.3
14.	1.9	5.2	-1.0	0.3	sn	0	2	11.6	2.9	5.1	8.2
15.	4.7	6.3	-0.2	0.0			0	0.4	7.4	12.4	17.5
16.	6.4	7.7	6.0	2.6	ri		0	0.0	11.6	16.5	25.2
17.	6.6	10.0	3.9	18.5	ri		0	1.1	5.8	11.8	16.5
18.	8.5	10.4	6.9	1.8	ri		0	0.7	4.8	8.2	13.9
19.	9.9	14.0	6.8	6.0	ri		0	9.0	5.1	8.8	14.9
20.	8.9	13.3	7.3	0.3	ri		0	11.6	7.9	13.9	21.6
21.	7.4	10.5	5.6	0.0			0	1.1	2.7	5.7	9.8
22.	6.8	9.0	5.2	0.4	ri		0	2.6	1.3	3.1	4.6
23.	6.9	9.2	4.8	0.0			0	2.5	1.3	3.1	4.6
24.	6.8	10.5	3.0	0.0			0	9.3	3.5	6.7	9.3
25.	7.7	10.6	5.0	0.0			0	5.7	3.1	5.1	8.2
26.	8.9	12.7	4.3	0.3	ri		0	6.0	2.7	5.7	9.3
27.	7.2	11.0	5.5	---			0	3.8	1.7	4.6	6.2
28.	8.5	12.1	5.4	0.0			0	5.0	3.5	5.7	9.8
29.	6.5	11.3	1.2	0.0			0	9.2	3.0	5.7	10.3
30.	3.2	10.0	-0.5	0.0			0	15.0	3.6	7.7	12.4



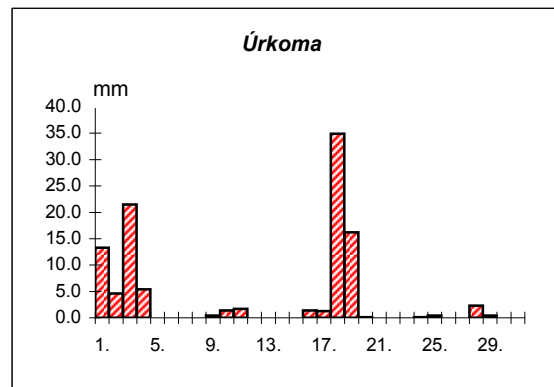
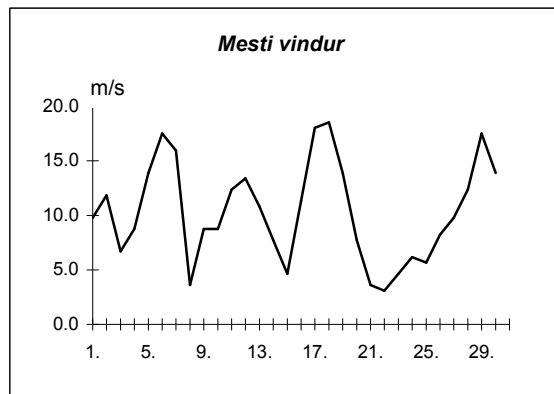
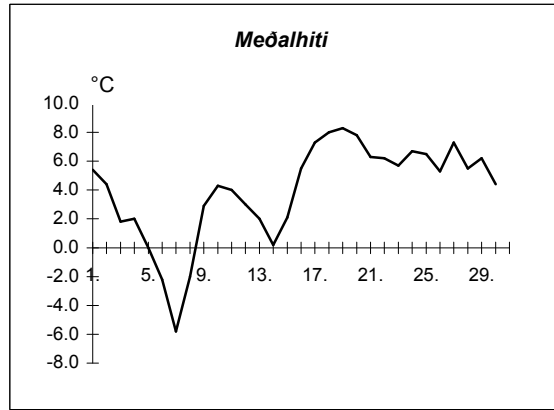
Meðalhiti	=	4.2 °C
Frávik frá meðaltali 1931-60	=	1.1 °C
Meðalhámarkshiti	=	7.4 °C
Meðallágmarkshiti	=	1.4 °C
Úrkomumagn	=	76.9 mm
Hlutfall úrkomu af meðaltali 1931-60	=	145.0 %
Meðalvindhraði	=	4.4 m/s
Sólskinsstundir	=	168.3 klst

Dags	Meðalhiti (°C)	Hámark (°C)	Lágmark (°C)	Úrkoma (mm)	Úrkomutegund	Snjódýpt (cm)	Snjóhula (0-4)	Sólskin(klst)	Meðalvindur (m/s)	Mesti vindur (m/s)	Hviða (m/s)
1.	0.7	9.1	0.5	5.1	sl		2	0.0	4.1	6.2	8.8
2.	0.2	1.5	-2.6	0.0			2	0.0	2.6	5.7	10.8
3.	1.0	4.5	-1.5	9.4	sn		2	9.8	2.6	6.2	9.3
4.	0.5	3.5	-2.0	---			2	3.5	3.0	8.2	12.4
5.	-3.2	3.0	-3.8	0.7	sn	2	2	0.0	3.8	6.2	12.9
6.	-5.4	-3.8	-6.1	3.1	sn	5	4	0.0	5.6	8.8	13.9
7.	-7.8	-5.3	-9.5	0.6	sn	7	4	5.5	3.5	7.7	11.8
8.	-3.4	0.3	-9.0	3.5	sn	13	4	0.2	1.0	3.1	4.6
9.	3.5	7.3	-2.3	0.3	sl	7	4	7.9	2.6	5.7	10.8
10.	1.4	4.3	-0.2	0.8	sl		2	0.0	1.5	3.1	5.7
11.	2.0	5.0	0.0	0.9	sl	3	2	0.7	3.4	8.8	13.9
12.	0.5	3.3	0.0	0.1	ri		0	1.1	5.6	9.3	13.9
13.	0.2	2.0	-1.0	0.1	ri		0	2.1	4.4	6.2	10.3
14.	-1.4	1.2	-2.1	0.0			0	8.0	3.1	4.6	6.7
15.	2.5	8.6	-5.6	---			0	7.4	2.6	6.7	11.8
16.	8.2	12.0	5.2	---			0	3.2	4.4	9.8	16.5
17.	6.8	10.5	4.4	---			0	0.4	3.7	7.2	13.9
18.	8.1	9.9	6.0	0.0			0	0.0	2.6	5.1	11.3
19.	9.9	14.3	6.9	0.0			0	11.5	3.2	6.2	11.8
20.	9.5	14.6	4.3	---			0	11.7	2.8	7.2	13.9
21.	7.4	14.2	4.0	---			0	5.2	2.1	6.2	8.2
22.	6.2	10.1	4.0	---			0	0.4	1.5	5.1	7.2
23.	7.3	11.6	4.0	---			0	0.0	1.8	4.6	7.2
24.	7.2	11.3	4.3	---			0	4.3	2.2	5.7	8.2
25.	4.5	9.0	1.0	---			0	13.0	2.6	6.7	8.8
26.	4.3	6.6	1.7	0.1	ri		0	0.2	2.8	6.2	8.8
27.	5.5	7.4	3.0	0.0			0	0.1	2.0	3.6	7.7
28.	6.7	9.5	5.0	0.0			0	3.3	3.0	5.7	11.8
29.	3.3	7.5	2.5	1.5	ri		0	0.2	4.2	7.7	10.8
30.	0.8	3.5	0.5	1.9	sl		0	0.4	6.3	10.3	16.0



Meðalhiti	=	2.9 °C
Frávik frá meðaltali 1931-60	=	1.2 °C
Meðalhámarkshiti	=	6.6 °C
Meðallágmarkshiti	=	0.4 °C
Úrkomumagn	=	28.1 mm
Hlutfall úrkomu af meðaltali 1931-60	=	88.0 %
Meðalvindhraði	=	3.1 m/s
Sólskinsstundir	=	100.1 klst

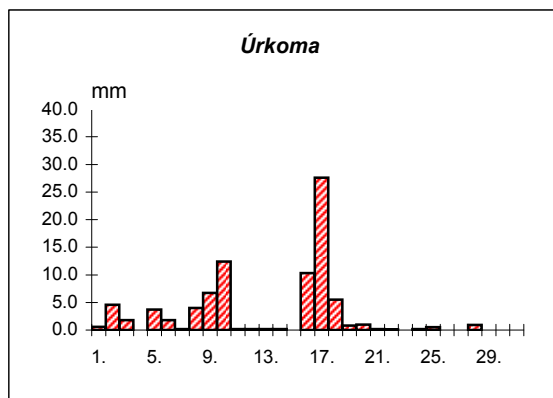
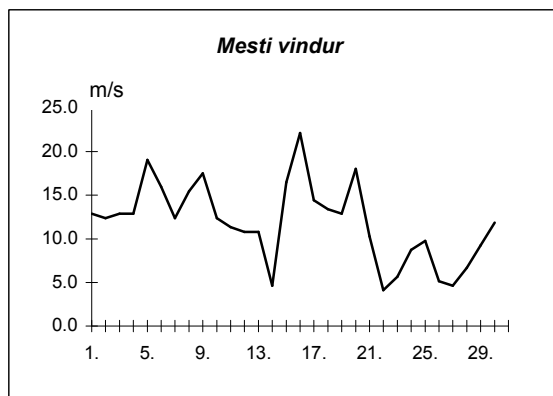
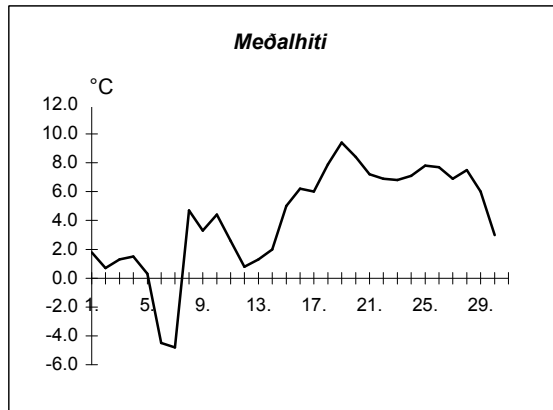
Dags	Meðalhiti (°C)	Hámark (°C)	Lágmark (°C)	Úrkoma (mm)	Úrkomutegund	Snjódýpt (cm)	Snjóhula (0-4)	Sólskin(klást)	Meðalvindur (m/s)	Mesti vindur (m/s)	Hviða (m/s)
1.	5.4	6.9	5.1	13.3	ri		0		3.3	9.8	13.9
2.	4.4	6.7	2.3	4.6	ri		0		4.6	11.8	16.0
3.	1.8	5.4	0.7	21.5	sl		0		3.3	6.7	11.3
4.	2.0	4.7	0.3	5.4	sl		0		3.6	8.8	14.9
5.	0.0	4.3	-0.9	---			0		6.6	13.9	18.5
6.	-2.2	2.2	-4.2	0.0			0		12.3	17.5	26.8
7.	-5.8	-0.9	-7.0	---			0		8.5	16.0	22.7
8.	-2.0	2.5	-8.3	---			0		1.8	3.6	5.1
9.	2.9	8.6	-1.1	0.4	sn		0		2.8	8.8	12.4
10.	4.3	9.0	0.1	1.4	sl		0		3.0	8.8	14.4
11.	4.0	7.9	1.9	1.7	ri		0		4.6	12.4	17.0
12.	3.0	5.9	2.7	---			0		8.0	13.4	20.6
13.	2.0	5.1	0.1	---			0		6.7	10.8	16.0
14.	0.2	4.6	-3.0	---			0		3.8	7.7	10.8
15.	2.1	6.4	-2.7	---			0		1.6	4.6	6.2
16.	5.5	8.5	2.0	1.4	sl		0		5.7	11.3	14.4
17.	7.3	8.5	4.0	1.3	ri		0		11.5	18.0	31.4
18.	8.0	9.9	6.9	34.9	ri		0		11.1	18.5	34.0
19.	8.3	11.5	6.0	16.2	ri		0		7.9	13.9	19.0
20.	7.8	10.7	4.9	0.1	ri		0		2.7	7.7	10.3
21.	6.3	8.5	5.7	0.0			0		1.2	3.6	4.6
22.	6.2	9.3	2.8	0.0			0		1.2	3.1	4.6
23.	5.7	10.0	1.5	---			0		2.3	4.6	6.7
24.	6.7	10.3	2.8	0.1	ri		0		2.3	6.2	8.2
25.	6.5	10.9	4.2	0.4	ri		0		3.0	5.7	7.7
26.	5.3	9.2	0.5	---			0		3.6	8.2	10.8
27.	7.3	10.0	5.4	0.0			0		6.7	9.8	13.4
28.	5.5	8.0	4.8	2.3	ri		0		7.9	12.4	17.0
29.	6.2	8.1	4.8	0.4	ri		0		9.3	17.5	25.2
30.	4.4	7.6	3.8	---			0		9.5	13.9	20.6



Meðalhiti	=	4.0 °C
Meðalhámarkshiti	=	7.3 °C
Meðallágmarkshiti	=	1.5 °C
Úrkomumagn	=	105.4 mm
Meðalvindhraði	=	5.4 m/s

Útgefandi : **Veðurstofa Íslands**  
 Heimilisfang : **Bústaðavegur 9**  
**150 Reykjavík**

Dags	Meðalhiti (°C)	Hámark (°C)	Lágmark (°C)	Úrkoma (mm)	Úrkomutegund	Snjódýpt (cm)	Snjóhula (0-4)	Sólskin(klíst)	Meðalvindur (m/s)	Mesti vindur (m/s)	Hviða (m/s)
1.	1.8	6.3	-2.2	0.6	ri		0		5.7	12.9	16.5
2.	0.7	4.9	-0.2	4.6	sl	1	2		3.6	12.4	16.5
3.	1.3	4.5	-2.3	1.8	sl	1	2		7.1	12.9	16.0
4.	1.5	4.7	-1.3	0.0			0		7.0	12.9	15.4
5.	0.3	5.4	-2.1	3.7	sl		0		9.8	19.0	25.2
6.	-4.5	-0.5	-8.1	1.8	sl		2		13.4	16.0	21.1
7.	-4.8	-3.3	-7.5	0.2	sn		2		6.1	12.4	15.4
8.	4.7	6.3	-4.2	4.0	sl		0		8.4	15.4	19.0
9.	3.3	6.2	1.8	6.7	ri		0		10.3	17.5	22.7
10.	4.4	7.3	1.5	12.4	sl		0		7.9	12.4	20.1
11.	2.6	5.3	0.8	0.2	ri		0		6.2	11.3	14.9
12.	0.8	4.4	-0.2	0.2	sl		0		7.8	10.8	13.9
13.	1.3	4.0	-0.7	0.2	sn		0		5.7	10.8	13.4
14.	2.0	5.4	-0.7	0.2	sn		2		2.8	4.6	5.7
15.	5.0	6.8	-0.6	0.0			0		11.0	16.5	22.7
16.	6.2	7.6	5.7	10.3	ri		0		16.6	22.1	30.9
17.	6.0	8.4	3.6	27.6	ri		0		8.5	14.4	21.6
18.	7.9	9.7	5.5	5.5	ri		0		9.3	13.4	19.0
19.	9.4	15.0	6.2	0.8	ri		0		6.5	12.9	19.0
20.	8.4	13.5	7.1	1.0	ri		0		12.9	18.0	27.3
21.	7.2	10.3	5.4	0.2	ri		0		5.8	10.3	13.9
22.	6.9	9.8	4.9	0.1	ri		0		2.6	4.1	5.7
23.	6.8	10.6	3.3	---			0		3.2	5.7	8.2
24.	7.1	10.6	3.2	0.2	ri		0		5.5	8.8	11.8
25.	7.8	11.3	5.1	0.5	ri		0		6.3	9.8	13.4
26.	7.7	10.2	5.5	0.0			0		3.3	5.1	7.2
27.	6.9	9.6	5.5	0.0			0		2.3	4.6	6.2
28.	7.5	10.7	5.3	0.9	ri		0		3.9	6.7	8.2
29.	6.0	10.8	3.1	0.0			0		5.7	9.3	12.4
30.	3.0	11.6	1.3	0.0			0		9.2	11.8	14.9



Meðalhiti	=	4.2 °C
Frávik frá meðaltali 1931-60	=	1.2 °C
Meðalhámarkshiti	=	7.6 °C
Meðallágmarkshiti	=	1.5 °C
Úrkomumagn	=	83.7 mm
Hlutfall úrkomu af meðaltali 1931-60	=	125.0 %
Meðalvindhraði	=	7.2 m/s