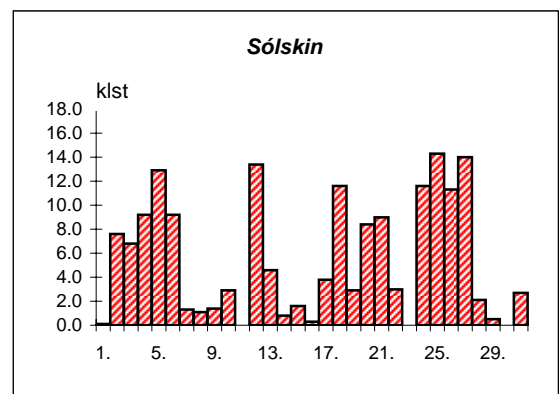
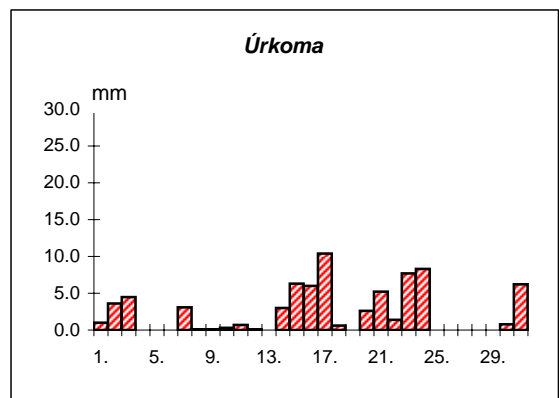
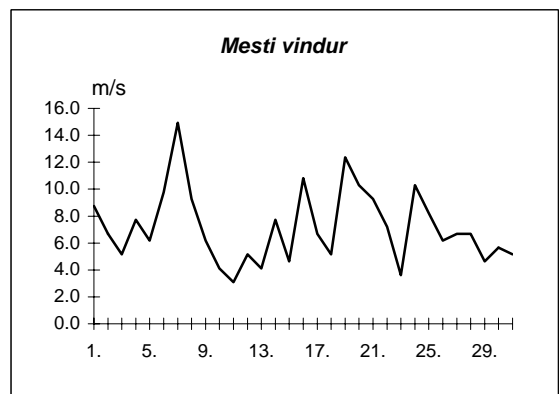
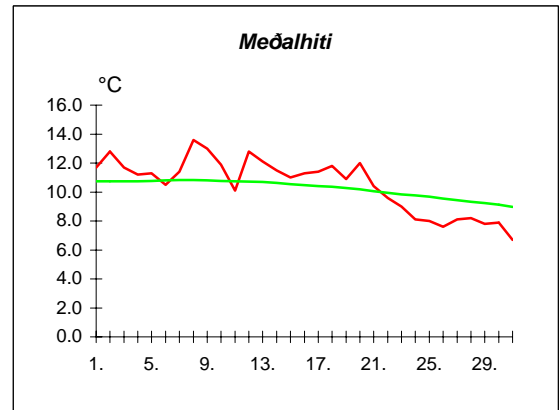
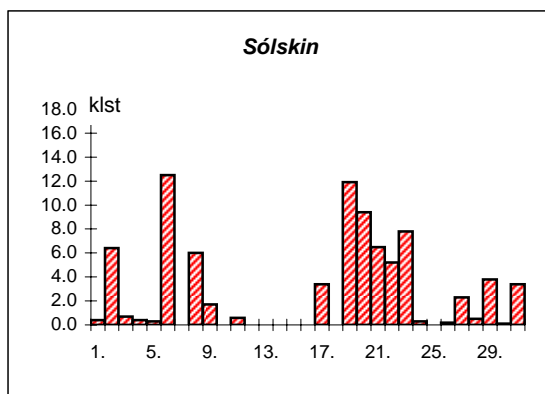
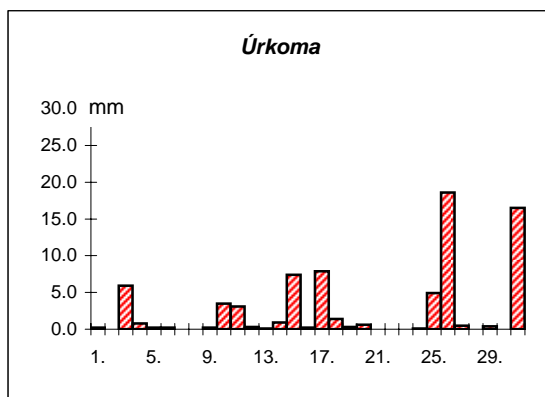
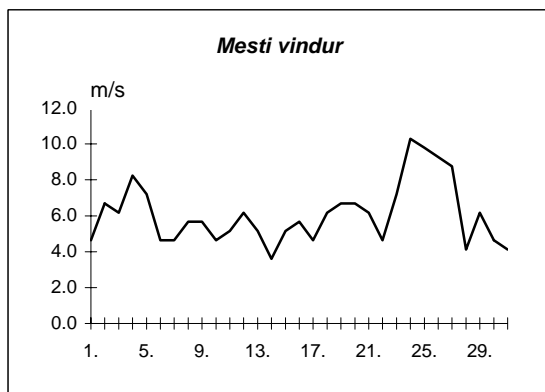
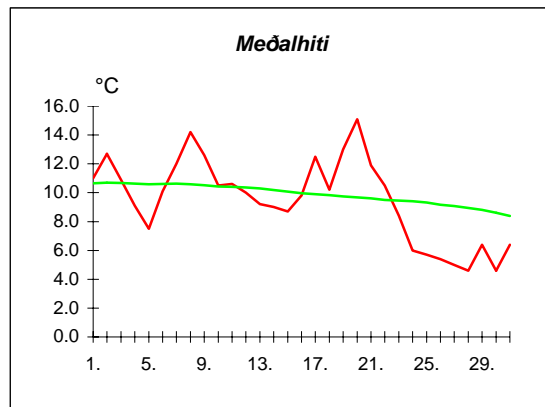


Dags	Meðalhiti (°C)	Hámark (°C)	Lágmark (°C)	Úrkoma (mm)	Úrkomutegund	Snjódýpt (cm)	Snjöhula (0-4)	Sólskin(klst)	Meðalvindur (m/s)	Mesti vindur (m/s)	Hviða (m/s)
1.	11.7	12.7	9.7	1.0	ri		0	0.1	4.3	8.8	13.9
2.	12.8	15.8	10.9	3.6	ri		0	7.6	2.8	6.7	9.3
3.	11.7	13.7	9.9	4.5	ri		0	6.8	2.6	5.1	7.7
4.	11.2	14.0	9.4	0.0			0	9.2	3.9	7.7	12.4
5.	11.3	13.8	8.3	---			0	12.9	3.8	6.2	9.8
6.	10.5	14.7	4.3	---			0	9.2	5.4	9.8	13.9
7.	11.4	13.6	8.9	3.1	ri		0	1.3	8.6	14.9	23.2
8.	13.6	15.6	8.8	0.1	ri		0	1.1	4.4	9.3	13.4
9.	13.0	15.9	11.0	0.1	ri		0	1.4	2.5	6.2	8.8
10.	11.9	14.5	10.8	0.3	ri		0	2.9	2.5	4.1	5.1
11.	10.1	12.6	9.3	0.7	ri		0	0.0	1.8	3.1	5.1
12.	12.8	16.7	8.0	0.1	ri		0	13.4	2.5	5.1	8.8
13.	12.1	16.0	8.4	---			0	4.6	1.6	4.1	6.2
14.	11.5	13.7	10.3	3.0	ri		0	0.8	5.0	7.7	12.4
15.	11.0	12.7	9.2	6.3	ri		0	1.6	2.2	4.6	6.7
16.	11.3	12.4	9.5	6.0	ri		0	0.3	5.4	10.8	19.6
17.	11.4	14.3	9.6	10.4	ri		0	3.8	4.3	6.7	9.8
18.	11.8	14.6	9.3	0.6	ri		0	11.6	2.8	5.1	8.8
19.	10.9	13.6	7.9	0.0			0	2.9	5.8	12.4	20.1
20.	12.0	14.1	10.5	2.6	ri		0	8.4	4.8	10.3	17.0
21.	10.4	12.9	9.1	5.2	ri		0	9.0	6.2	9.3	15.4
22.	9.6	12.1	7.5	1.4	ri		0	3.0	3.9	7.2	11.3
23.	9.0	11.0	6.9	7.7	ri		0	0.0	1.7	3.6	5.1
24.	8.1	10.7	7.4	8.3	ri		0	11.6	6.0	10.3	18.5
25.	8.0	10.8	5.9	---			0	14.3	5.9	8.2	13.9
26.	7.6	11.0	5.3	---			0	11.3	4.1	6.2	9.8
27.	8.1	12.1	3.4	---			0	14.0	2.5	6.7	10.3
28.	8.2	12.1	6.0	---			0	2.1	4.1	6.7	10.8
29.	7.8	10.7	4.9	0.0			0	0.5	2.8	4.6	6.7
30.	7.9	10.4	6.4	0.8	ri		0	0.0	3.2	5.7	10.3
31.	6.7	8.8	5.7	6.2	ri		0	2.7	2.8	5.1	9.3



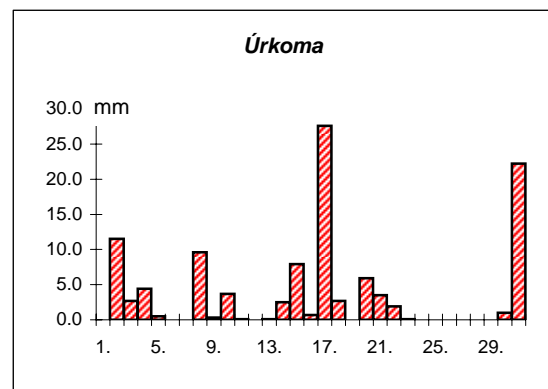
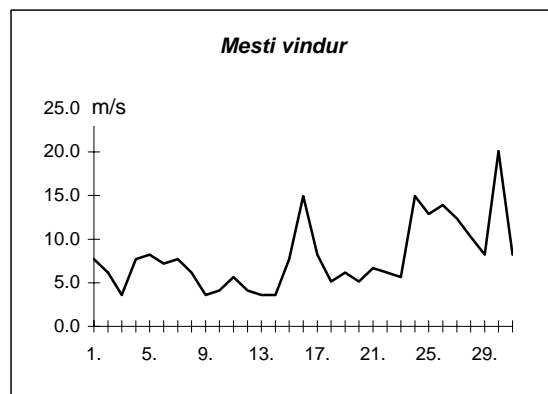
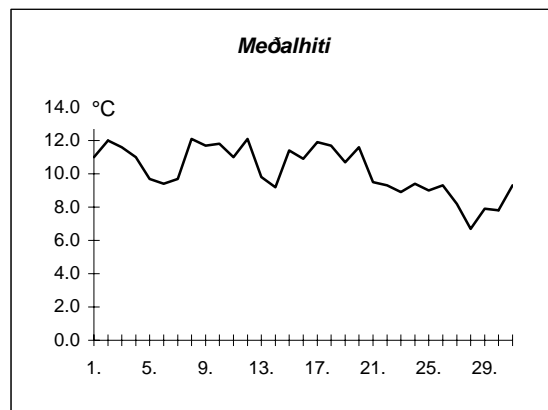
Meðalhiti	=	10.5 °C
Frávik frá meðaltali 1931-60	=	-0.3 °C
Meðalhámarkshiti	=	13.2 °C
Meðallágmarkshiti	=	8.2 °C
Úrkomumagn	=	72.0 mm
Hlutfall úrkomu af meðaltali 1931-60	=	109.0 %
Meðalvindhraði	=	3.9 m/s
Sólskinsstundir	=	168.4 klst

Dags	Meðalhiti (°C)	Hámark (°C)	Lágmark (°C)	Úrkoma (mm)	Úrkomutegund	Snjódýpt (cm)	Snjöhula (0-4)	Sólskin(klst)	Meðalvindur (m/s)	Mesti vindur (m/s)	Hviða (m/s)
1.	11.0	13.6	9.7	0.2	ri		0	0.4	1.9	4.6	6.7
2.	12.7	19.0	9.4	0.0			0	6.4	2.0	6.7	10.3
3.	10.9	14.0	8.5	5.9	ri		0	0.7	3.3	6.2	9.8
4.	9.1	12.0	9.1	0.8	ri		0	0.4	5.5	8.2	12.9
5.	7.5	9.2	6.5	0.2	ri		0	0.3	4.8	7.2	10.8
6.	10.1	15.0	5.0	0.2	ri		0	12.5	2.0	4.6	6.7
7.	12.0	15.2	7.8	---			0	0.0	3.4	4.6	8.8
8.	14.2	20.5	9.8	0.0			0	6.0	1.7	5.7	9.3
9.	12.6	15.5	11.4	0.2	ri		0	1.7	1.8	5.7	7.2
10.	10.5	13.5	10.0	3.5	ri		0	0.0	2.5	4.6	7.2
11.	10.6	12.5	9.4	3.1	ri		0	0.6	2.2	5.1	7.7
12.	10.0	11.4	9.1	0.3	ri		0	0.0	3.8	6.2	8.8
13.	9.2	10.9	8.6	0.1	ri		0	0.0	3.5	5.1	8.8
14.	9.0	11.5	7.1	0.9	ri		0	0.0	1.6	3.6	5.1
15.	8.7	10.2	8.0	7.4	ri		0	0.0	3.6	5.1	8.2
16.	9.8	13.0	7.5	0.2	ri		0	0.0	1.9	5.7	11.8
17.	12.5	17.3	8.8	7.9	ri		0	3.4	1.8	4.6	8.8
18.	10.2	14.4	9.8	1.4	ri		0	0.0	3.3	6.2	10.8
19.	13.0	20.5	5.5	0.3	ri		0	11.9	3.1	6.7	13.4
20.	15.1	21.0	11.3	0.6	ri		0	9.4	2.9	6.7	11.3
21.	11.9	17.5	9.2	---			0	6.5	3.6	6.2	11.8
22.	10.5	15.0	6.2	---			0	5.2	2.1	4.6	8.8
23.	8.4	13.3	3.6	---			0	7.8	3.8	7.2	11.3
24.	6.0	11.2	5.7	0.1	ri		0	0.3	7.5	10.3	16.0
25.	5.7	6.4	5.0	4.9	ri		0	0.0	6.2	9.8	15.4
26.	5.4	7.3	4.8	18.6	ri		0	0.2	5.7	9.3	14.4
27.	5.0	7.5	3.7	0.5	ri		0	2.3	4.3	8.8	13.9
28.	4.6	7.0	1.4	0.0			0	0.5	1.7	4.1	6.2
29.	6.4	8.5	5.1	0.4	ri		0	3.8	3.3	6.2	9.3
30.	4.6	8.0	3.0	---			0	0.1	2.0	4.6	9.3
31.	6.4	10.5	2.5	16.5	ri		0	3.4	1.9	4.1	7.2



Meðalhiti	=	9.5 °C
Frávik frá meðaltali 1931-60	=	-0.8 °C
Meðalhámarkshiti	=	13.0 °C
Meðallágmarkshiti	=	7.2 °C
Úrkomumagn	=	74.2 mm
Hlutfall úrkomu af meðaltali 1931-60	=	190.0 %
Meðalvindhraði	=	3.2 m/s
Sólskinsstundir	=	83.8 klst

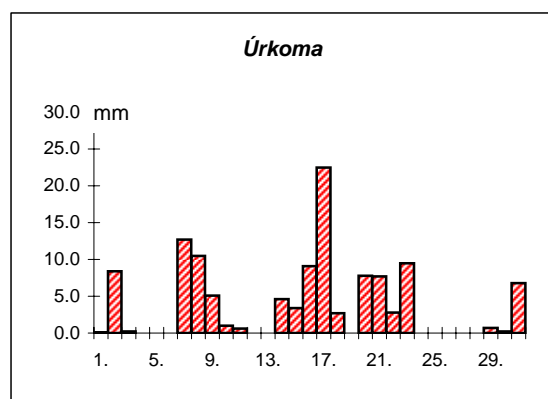
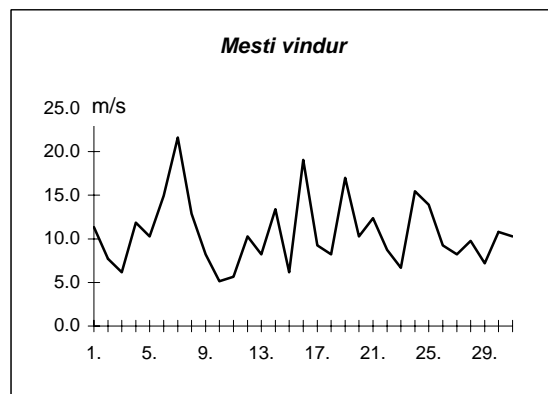
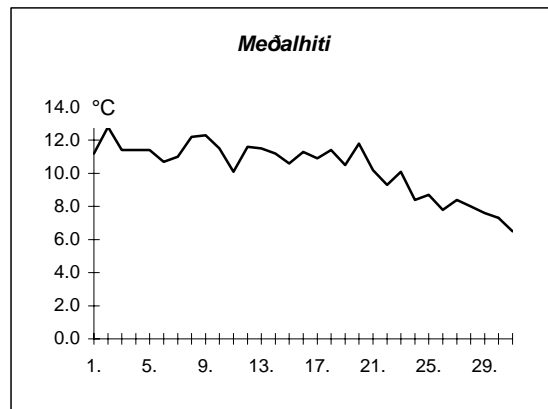
Dags	Meðalhiti (°C)	Hámark (°C)	Lágmark (°C)	Úrkoma (mm)	Úrkomutegund	Snjódypt (cm)	Snjóhula (0-4)	Sólskin(klist)	Meðalvindur (m/s)	Mesti vindur (m/s)	Hviða (m/s)
1.	11.0	14.0	9.2	0.0			0		3.9	7.7	10.8
2.	12.0	14.4	10.9	11.5	ri		0		3.9	6.2	8.2
3.	11.6	14.1	10.2	2.7	ri		0		1.8	3.6	5.1
4.	11.0	14.4	9.4	4.4	ri		0		2.5	7.7	10.8
5.	9.7	13.4	7.9	0.5	ri		0		3.0	8.2	11.8
6.	9.4	12.9	4.8	0.0			0		2.6	7.2	6.2
7.	9.7	12.0	7.0	---			0		3.8	7.7	10.3
8.	12.1	13.2	10.3	9.6	ri		0		2.5	6.2	7.2
9.	11.7	13.4	10.1	0.3	ri		0		1.3	3.6	5.1
10.	11.8	15.0	10.3	3.7	ri		0		1.4	4.1	5.7
11.	11.0	16.0	6.3	0.1	ri		0		2.2	5.7	7.7
12.	12.1	14.6	10.6	---			0		1.7	4.1	6.2
13.	9.8	13.0	8.5	0.1	ri		0		2.2	3.6	5.1
14.	9.2	10.4	7.7	2.5	ri		0		1.9	3.6	5.7
15.	11.4	16.0	6.2	7.9	ri		0		2.6	7.7	10.8
16.	10.9	13.5	8.4	0.7	ri		0		5.5	14.9	27.3
17.	11.9	15.0	10.6	27.6	ri		0		3.3	8.2	8.8
18.	11.7	14.6	7.7	2.7	ri		0		1.8	5.1	7.7
19.	10.7	13.2	8.8	---			0		2.8	6.2	7.2
20.	11.6	14.2	10.1	5.9	ri		0		3.0	5.1	9.8
21.	9.5	14.0	6.9	3.5	ri		0		2.5	6.7	12.4
22.	9.3	12.9	6.9	1.9	ri		0		2.6	6.2	8.8
23.	8.9	12.7	3.1	0.1	ri		0		1.6	5.7	7.7
24.	9.4	13.5	7.5	---			0		10.2	14.9	22.7
25.	9.0	10.4	7.3	---			0		9.8	12.9	22.7
26.	9.3	11.7	7.9	---			0		8.4	13.9	18.0
27.	8.2	11.9	6.4	0.0			0		7.4	12.4	16.0
28.	6.7	10.1	4.0	---			0		5.6	10.3	14.4
29.	7.9	10.3	6.4	---			0		2.3	8.2	12.9
30.	7.8	9.0	4.8	1.0	ri		0		8.8	20.1	29.3
31.	9.3	11.0	7.8	22.2	ri		0		4.8	8.2	11.3



Meðalhiti	=	10.2 °C
Meðalhámarkshiti	=	13.1 °C
Meðallágmarkshiti	=	7.9 °C
Úrkomumagn	=	108.9 mm
Meðalvindhraði	=	3.8 m/s

Útgefandi : **Veðurstofa Íslands**
 Heimilisfang : **Bústaðavegur 9**
150 Reykjavík

Dags	Meðalhiti (°C)	Hámark (°C)	Lágmark (°C)	Úrkoma (mm)	Úrkomutegund	Snjódýpt (cm)	Snjöhula (0-4)	Sólskin(klist)	Meðalvindur (m/s)	Mesti vindur (m/s)	Hviða (m/s)
1.	11.2	12.5	10.1	0.1	ri		0		6.1	11.3	16.5
2.	12.8	15.8	10.6	8.4	ri		0		5.5	7.7	10.8
3.	11.4	14.3	9.5	0.2	ri		0		4.4	6.2	8.8
4.	11.4	14.2	9.8	0.0			0		8.5	11.8	14.4
5.	11.4	14.8	8.5	---			0		6.6	10.3	12.9
6.	10.7	14.9	6.9	---			0		10.0	14.9	19.6
7.	11.0	12.5	9.6	12.7	ri		0		14.6	21.6	31.4
8.	12.2	13.2	11.2	10.5	ri		0		7.5	12.9	16.5
9.	12.3	15.1	10.7	5.1	ri		0		4.3	8.2	10.3
10.	11.5	13.5	10.4	1.0	ri		0		2.8	5.1	6.7
11.	10.1	12.0	9.1	0.6	ri		0		2.7	5.7	7.2
12.	11.6	15.0	8.5	0.0			0		6.2	10.3	13.4
13.	11.5	14.0	8.7	---			0		5.6	8.2	10.3
14.	11.2	14.1	10.1	4.6	ri		0		7.9	13.4	18.0
15.	10.6	12.2	9.1	3.4	ri		0		3.8	6.2	8.8
16.	11.3	13.2	9.6	9.1	sl		0		10.2	19.0	27.8
17.	10.9	13.4	9.3	22.5	ri		0		6.2	9.3	11.8
18.	11.4	16.0	8.9	2.7	ri		0		4.9	8.2	10.3
19.	10.5	12.2	9.4	---			0		9.0	17.0	23.2
20.	11.8	13.7	10.4	7.8	ri		0		7.8	10.3	18.5
21.	10.2	12.7	9.4	7.7	ri		0		8.2	12.4	17.5
22.	9.3	11.5	7.2	2.8	ri		0		6.0	8.8	11.8
23.	10.1	12.2	7.5	9.5	ri		0		3.1	6.7	8.2
24.	8.4	12.0	7.4	0.0			0		10.8	15.4	19.6
25.	8.7	11.1	6.6	---			0		8.1	13.9	16.5
26.	7.8	11.0	4.6	---			0		6.2	9.3	13.4
27.	8.4	11.1	4.8	---			0		3.5	8.2	11.3
28.	8.0	11.2	6.8	0.0			0		6.4	9.8	11.8
29.	7.6	9.7	6.1	0.7	ri		0		3.9	7.2	8.8
30.	7.3	12.2	7.3	0.2	ri		0		8.2	10.8	14.4
31.	6.5	8.4	5.1	6.8	ri		0		7.1	10.3	12.9



Meðalhiti	=	10.3 °C
Frávik frá meðaltali 1931-60	=	-0.1 °C
Meðalhámarkshiti	=	12.9 °C
Meðallágmarkshiti	=	8.5 °C
Úrkomumagn	=	116.4 mm
Hlutfall úrkomu af meðaltali 1931-60	=	139.0 %
Meðalvindhraði	=	6.6 m/s