

Wind rose BITN 2005 – 2014

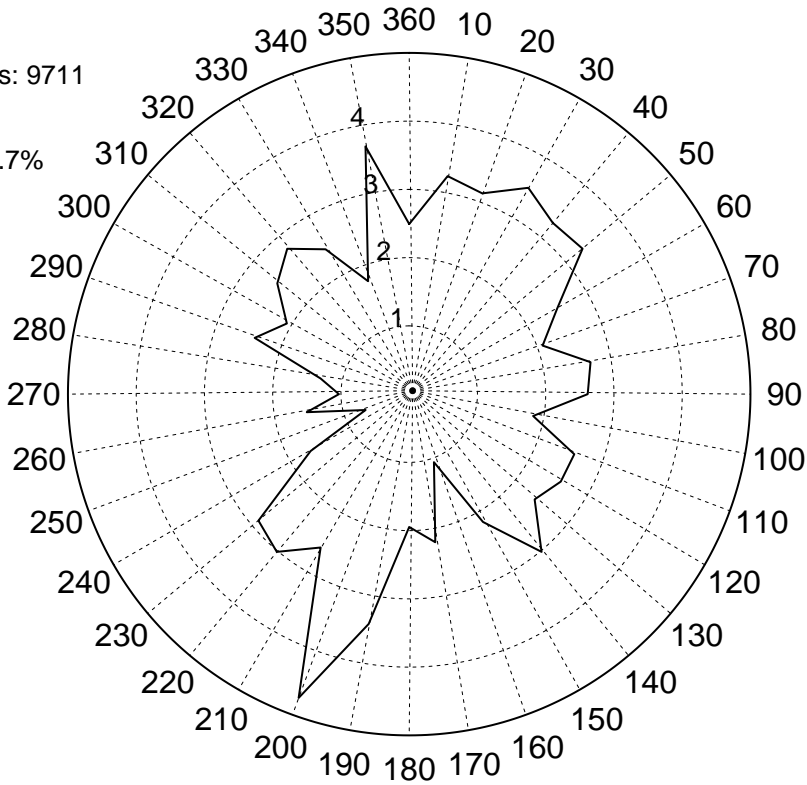
Frequency of wind direction (%)

Aerodrome

Total observations: 9711

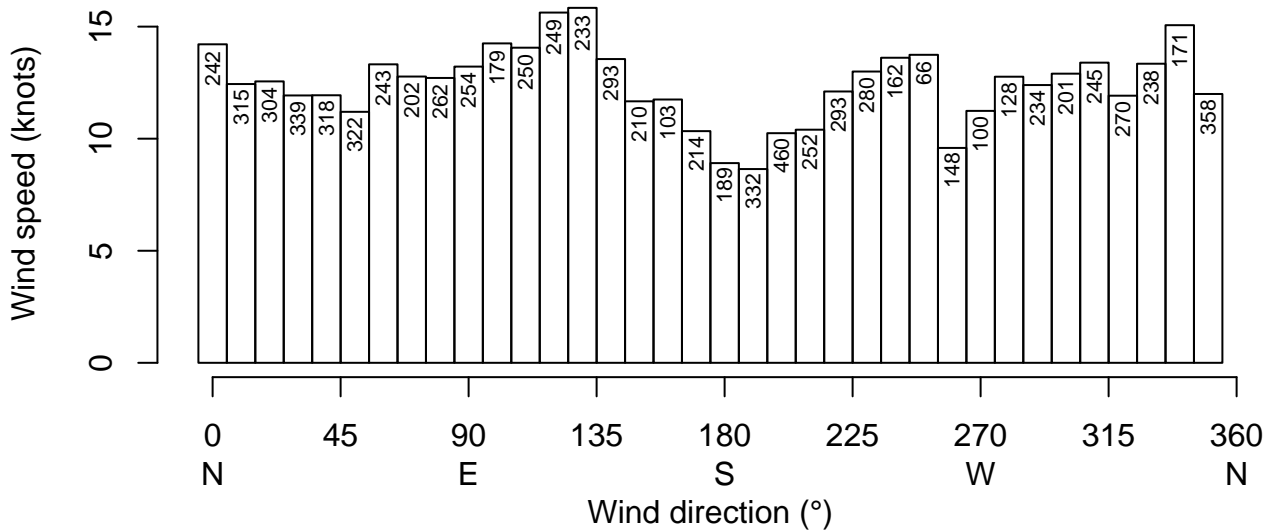
Calm: 5.2%

Variable winds: 5.7%



Average wind speed for wind direction

(Number of observations for wind direction)



Wind rose BITN January 2005–2014

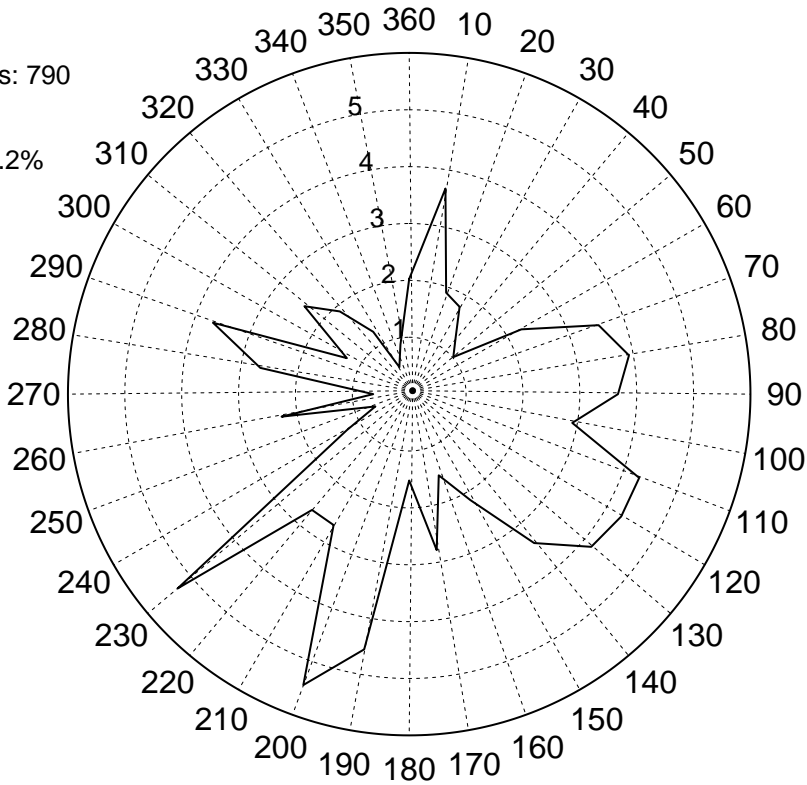
Frequency of wind direction (%)

Aerodrome

Total observations: 790

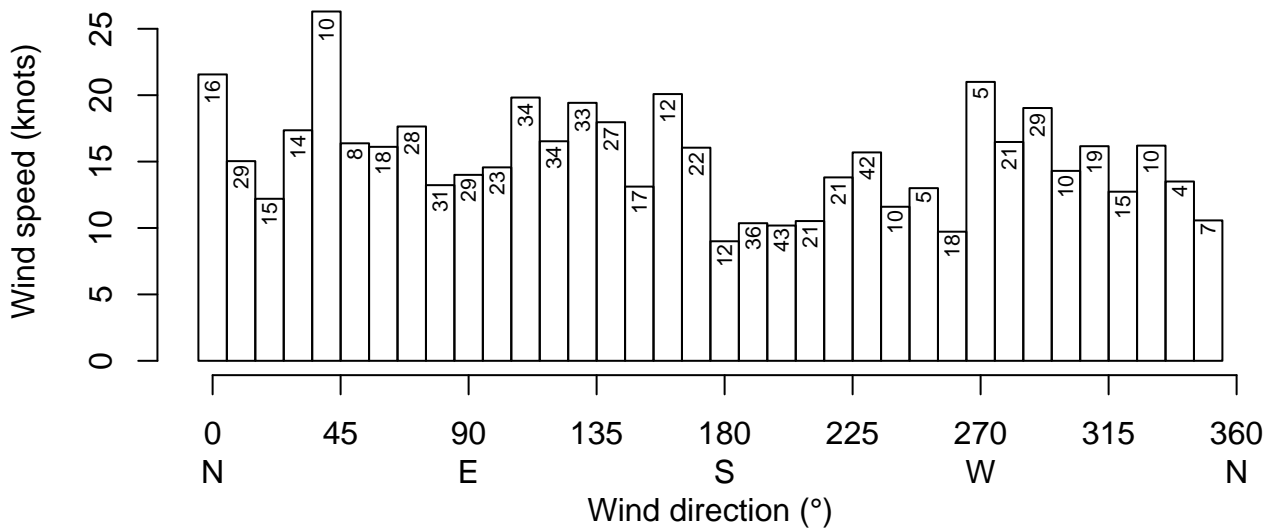
Calm: 4.7%

Variable winds: 3.2%



Average wind speed for wind direction

(Number of observations for wind direction)



Wind rose BITN February 2005–2014

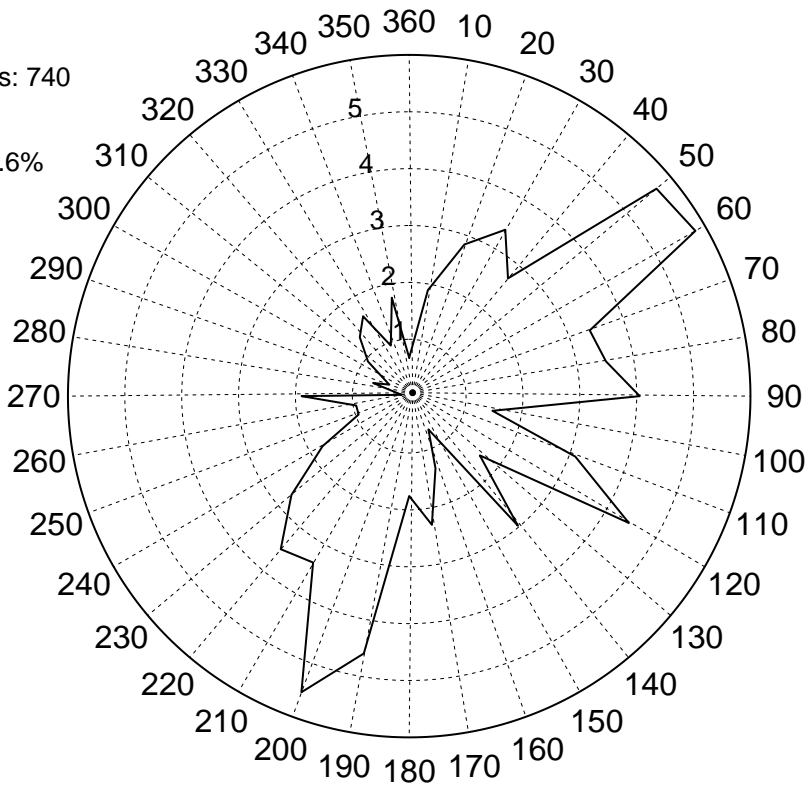
Frequency of wind direction (%)

Aerodrome

Total observations: 740

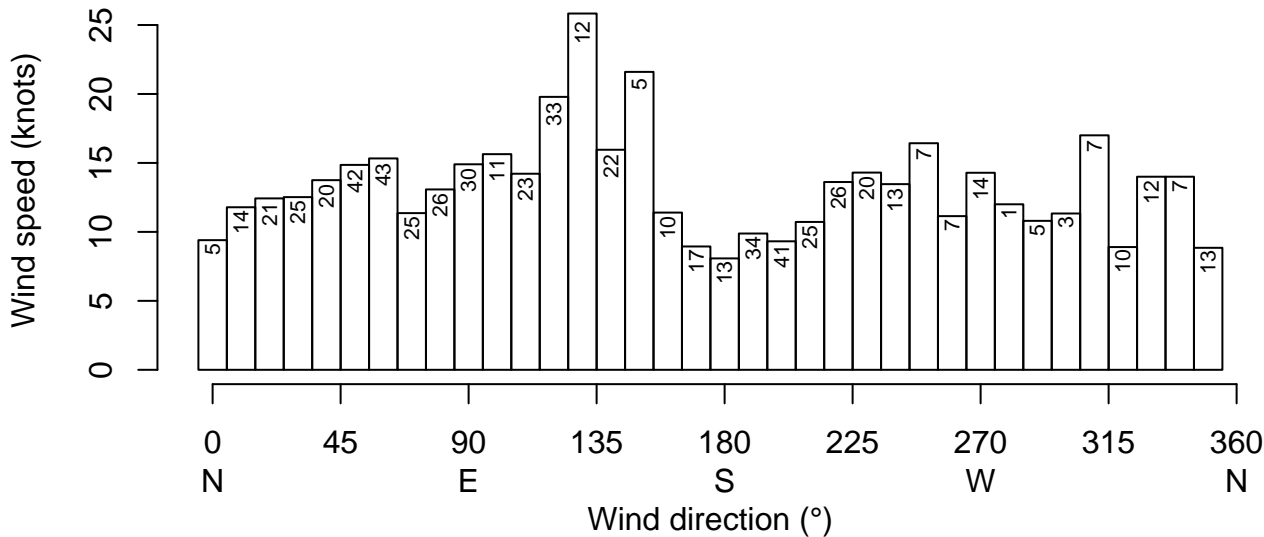
Calm: 5.8%

Variable winds: 7.6%



Average wind speed for wind direction

(Number of observations for wind direction)



Wind rose BITN March 2005–2014

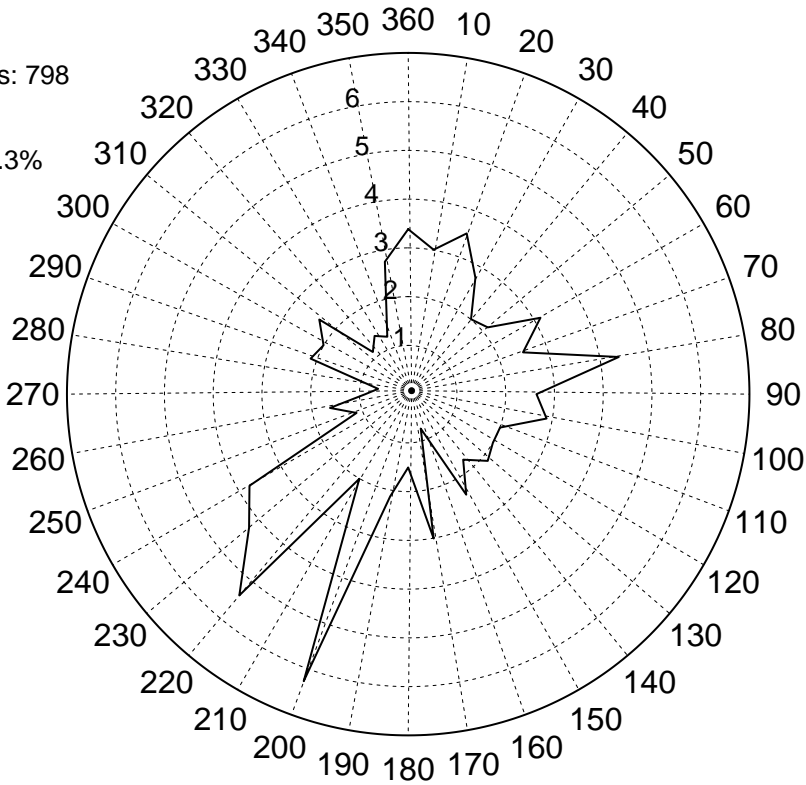
Frequency of wind direction (%)

Aerodrome

Total observations: 798

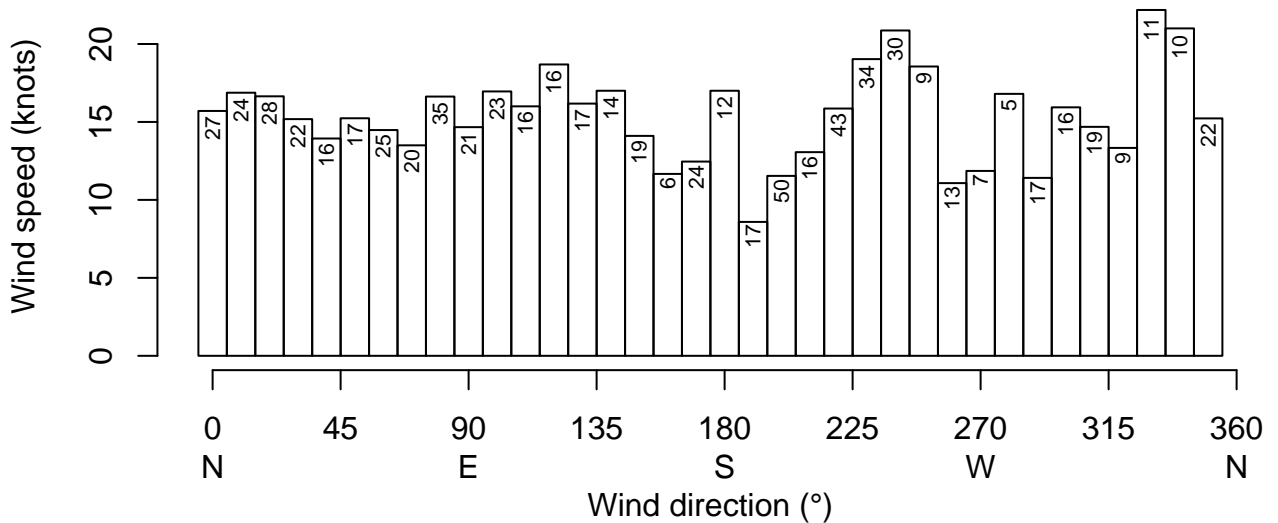
Calm: 6.8%

Variable winds: 4.3%



Average wind speed for wind direction

(Number of observations for wind direction)



Wind rose BITN April 2005–2014

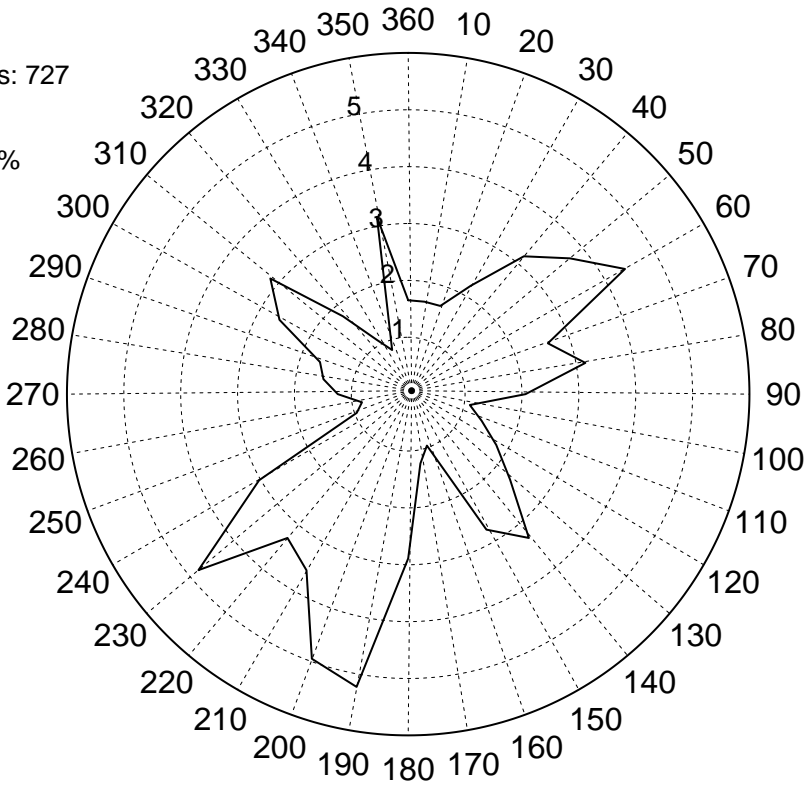
Frequency of wind direction (%)

Aerodrome

Total observations: 727

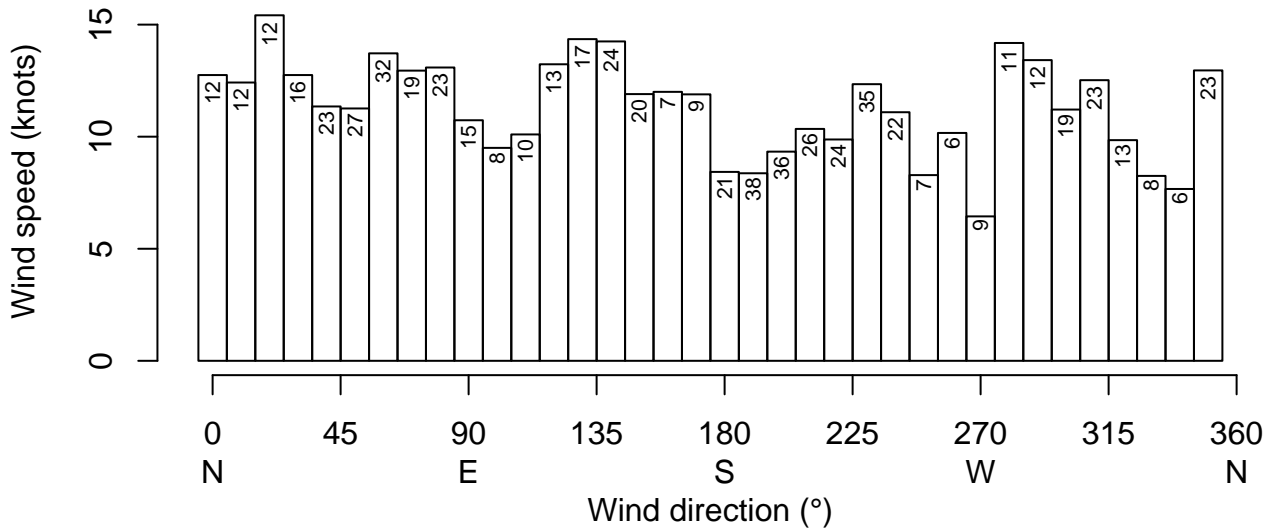
Calm: 7.3%

Variable winds: 5%



Average wind speed for wind direction

(Number of observations for wind direction)



Wind rose BITN May 2005–2014

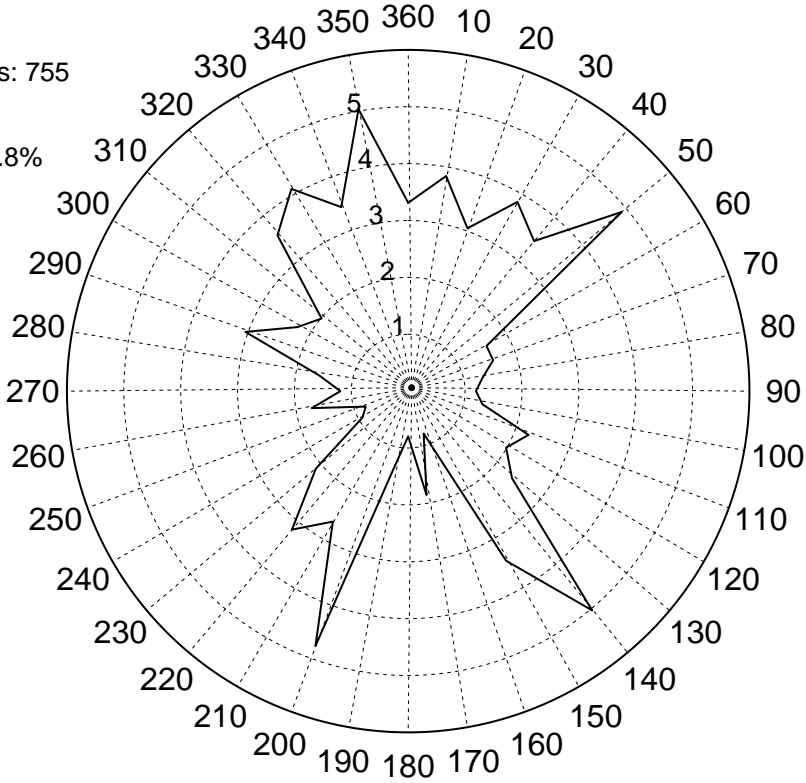
Frequency of wind direction (%)

Aerodrome

Total observations: 755

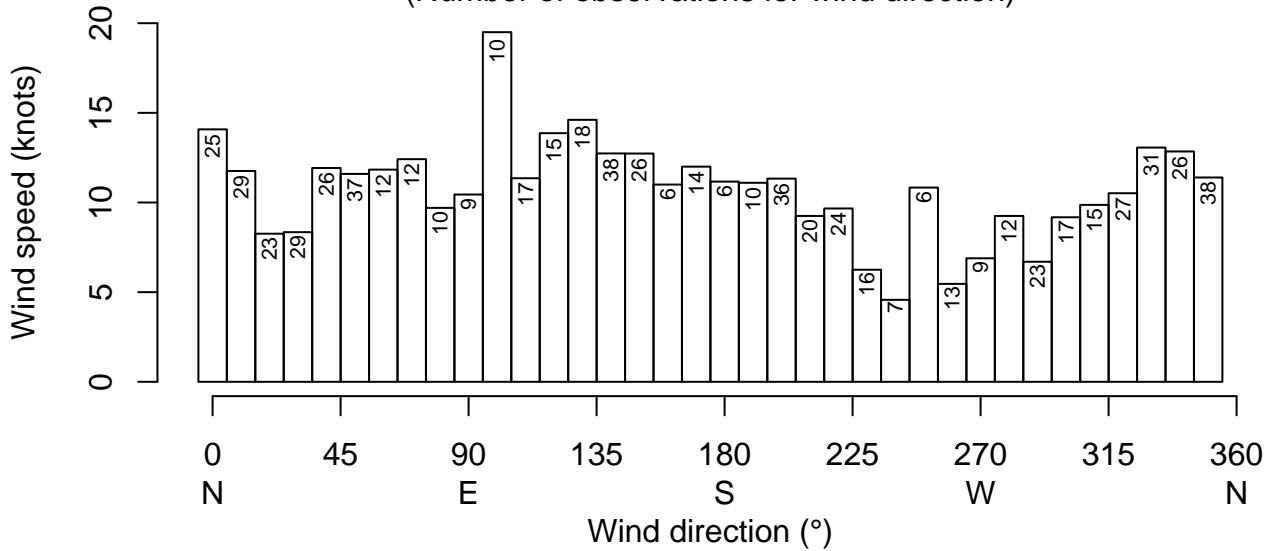
Calm: 3.7%

Variable winds: 4.8%



Average wind speed for wind direction

(Number of observations for wind direction)



Wind rose BITN June 2005–2014

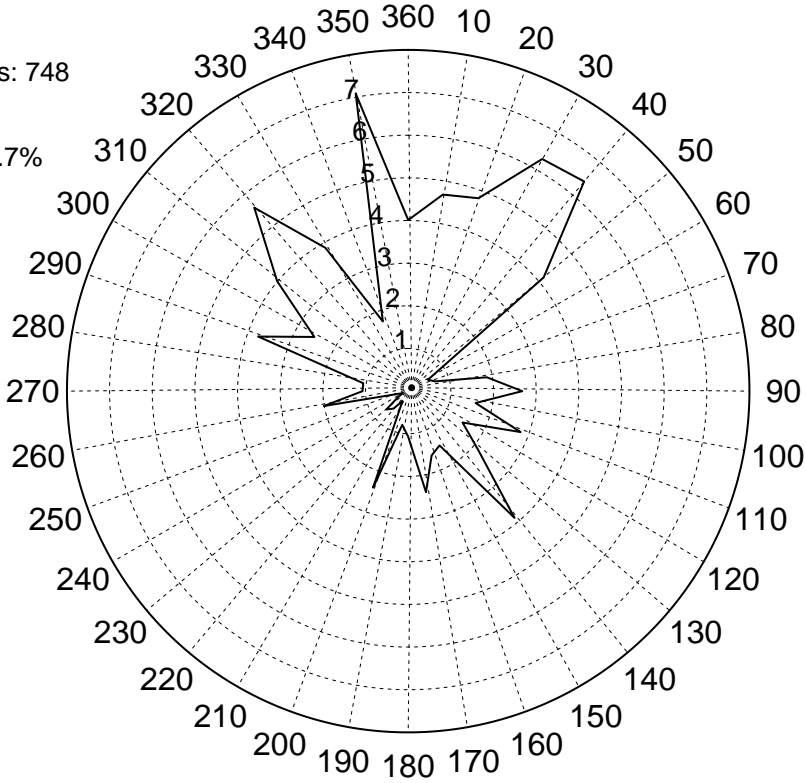
Frequency of wind direction (%)

Aerodrome

Total observations: 748

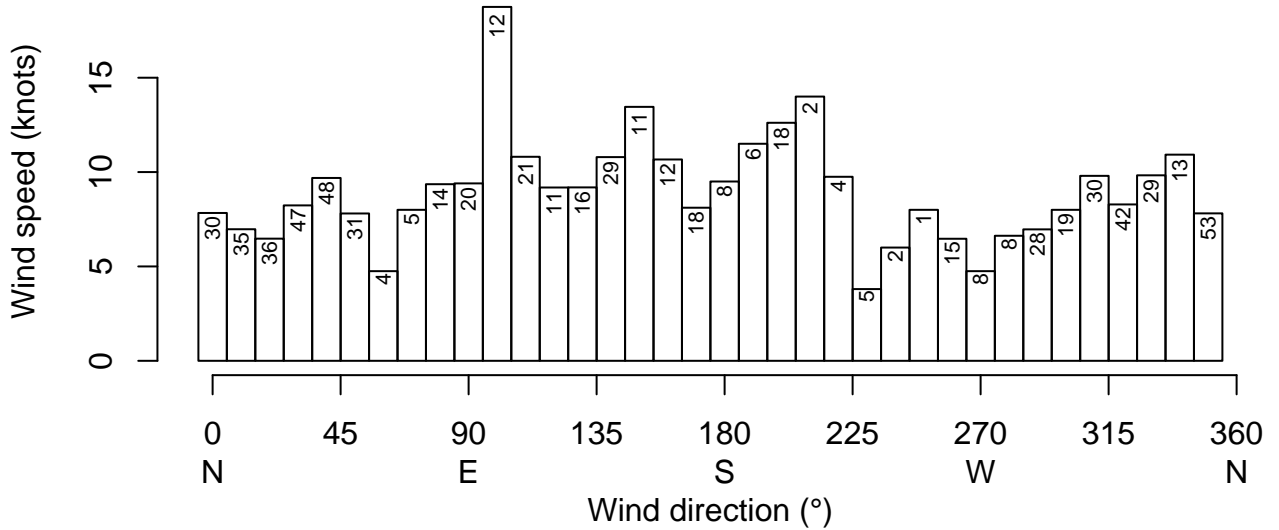
Calm: 2.9%

Variable winds: 4.7%



Average wind speed for wind direction

(Number of observations for wind direction)



Wind rose BITN July 2005–2014

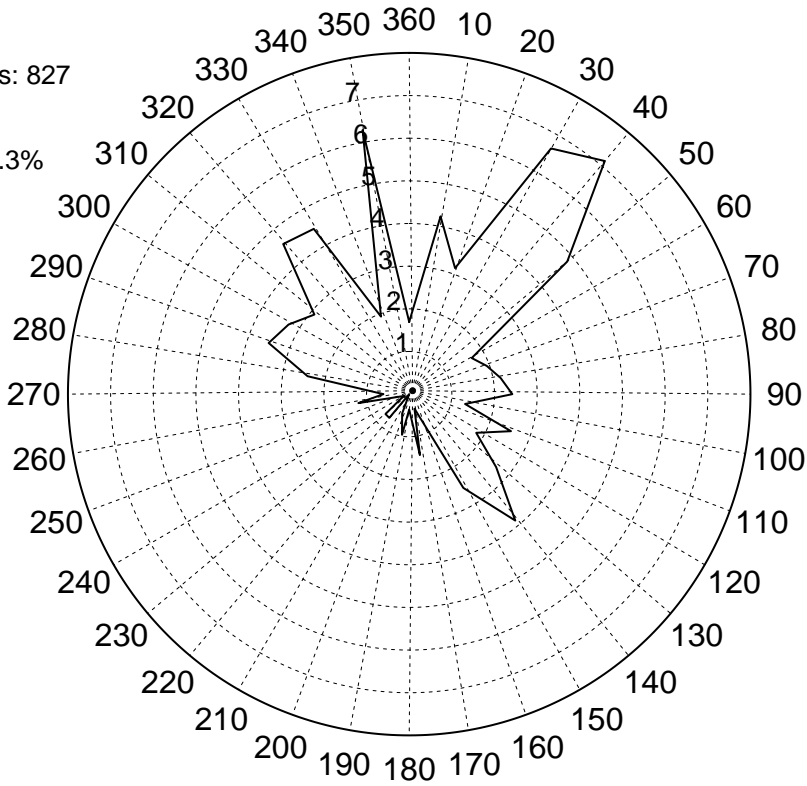
Frequency of wind direction (%)

Aerodrome

Total observations: 827

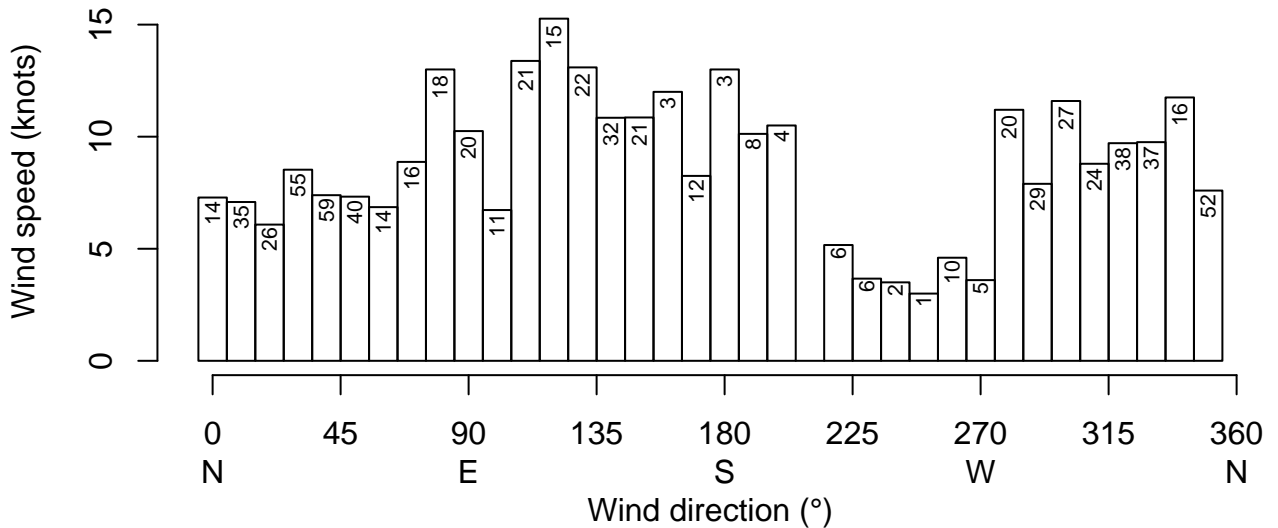
Calm: 4.4%

Variable winds: 8.3%



Average wind speed for wind direction

(Number of observations for wind direction)



Wind rose BITN August 2005–2014

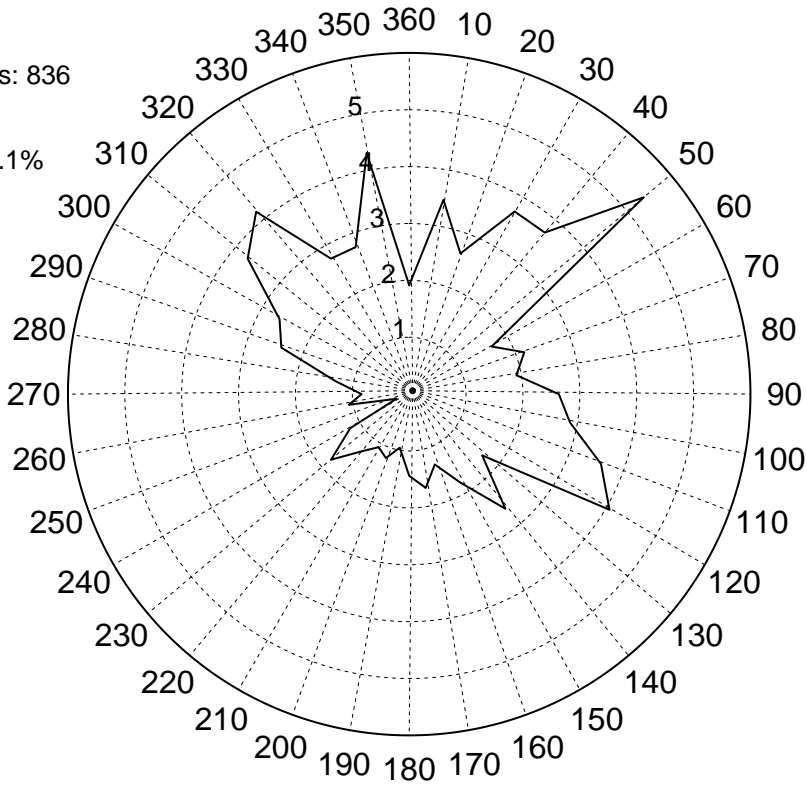
Frequency of wind direction (%)

Aerodrome

Total observations: 836

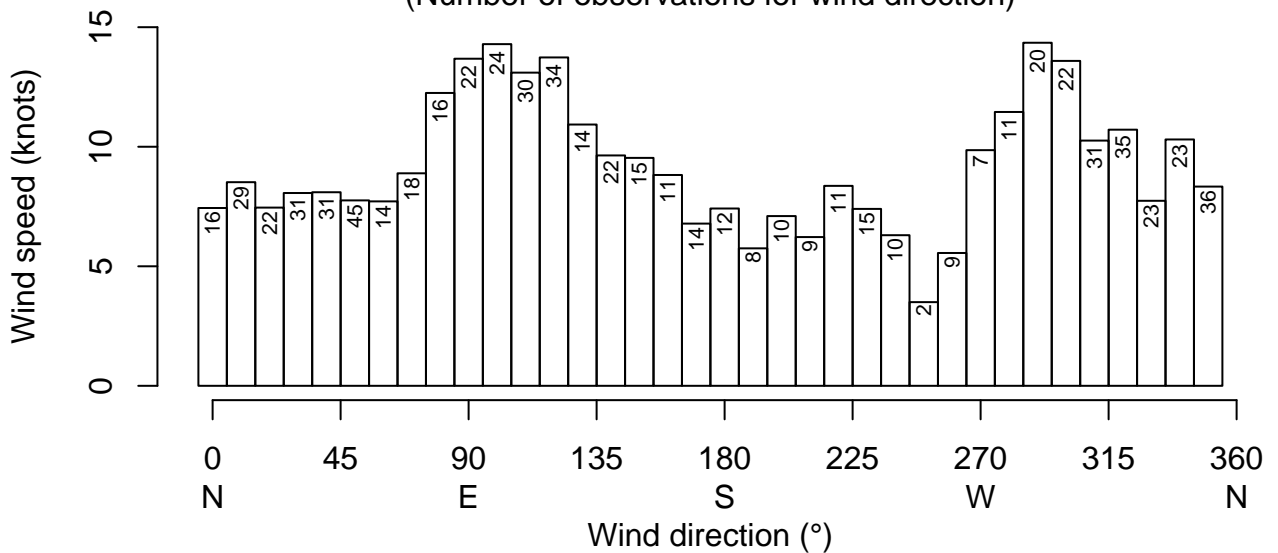
Calm: 7.9%

Variable winds: 8.1%



Average wind speed for wind direction

(Number of observations for wind direction)



Wind rose BITN September 2005–2014

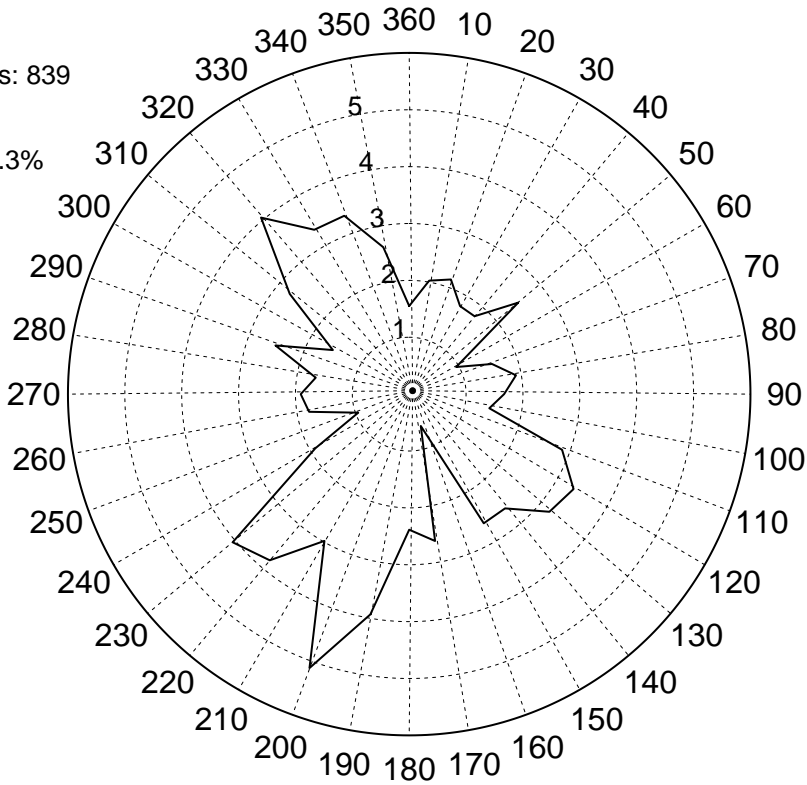
Frequency of wind direction (%)

Aerodrome

Total observations: 839

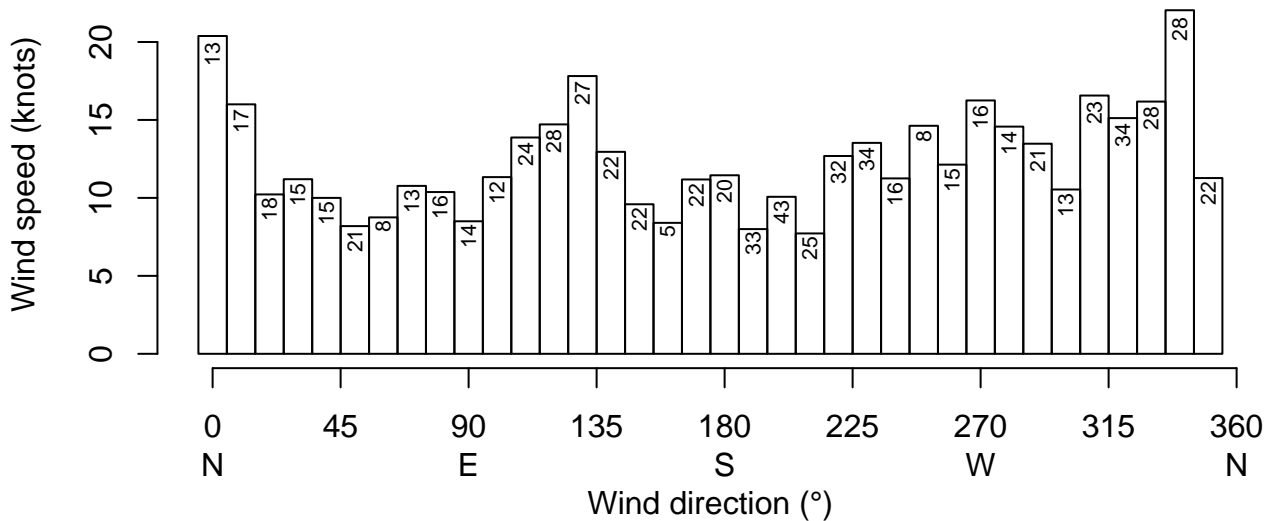
Calm: 4.9%

Variable winds: 7.3%



Average wind speed for wind direction

(Number of observations for wind direction)



Wind rose BITN October 2005–2014

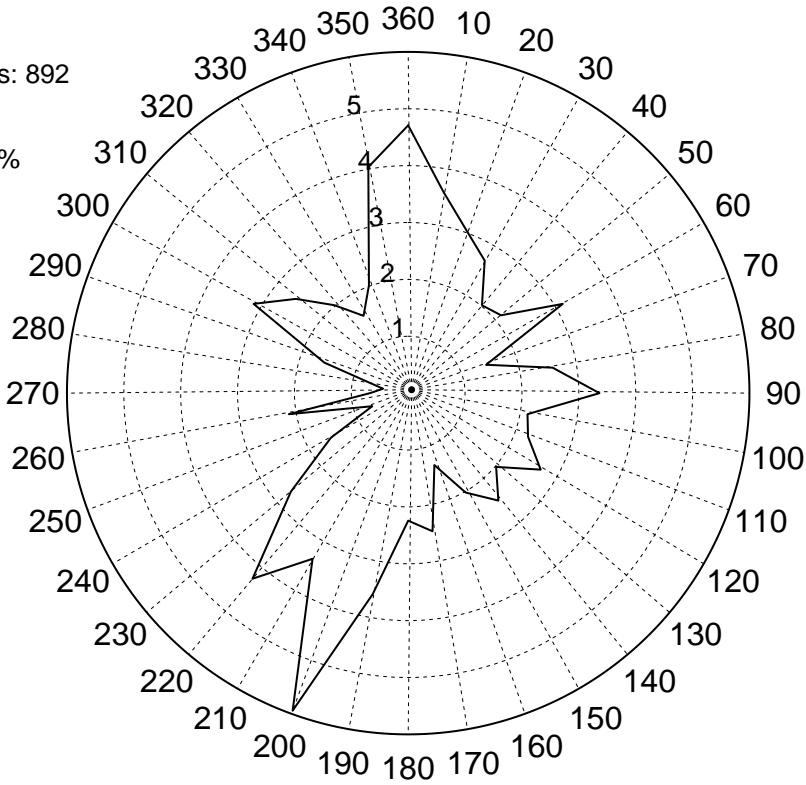
Frequency of wind direction (%)

Aerodrome

Total observations: 892

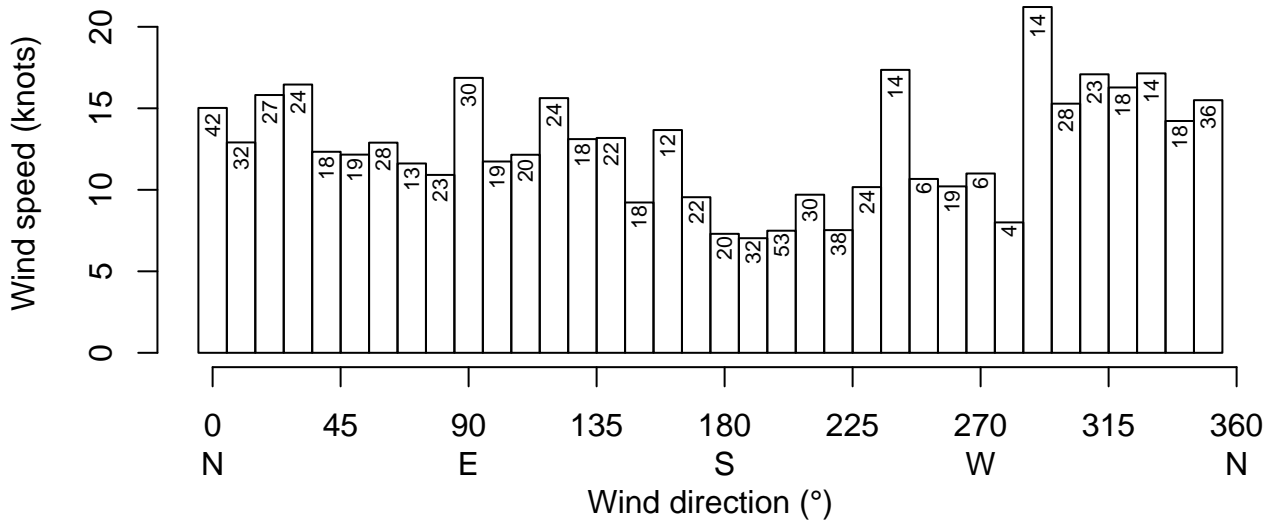
Calm: 4.4%

Variable winds: 5%



Average wind speed for wind direction

(Number of observations for wind direction)



Wind rose BITN November 2005–2014

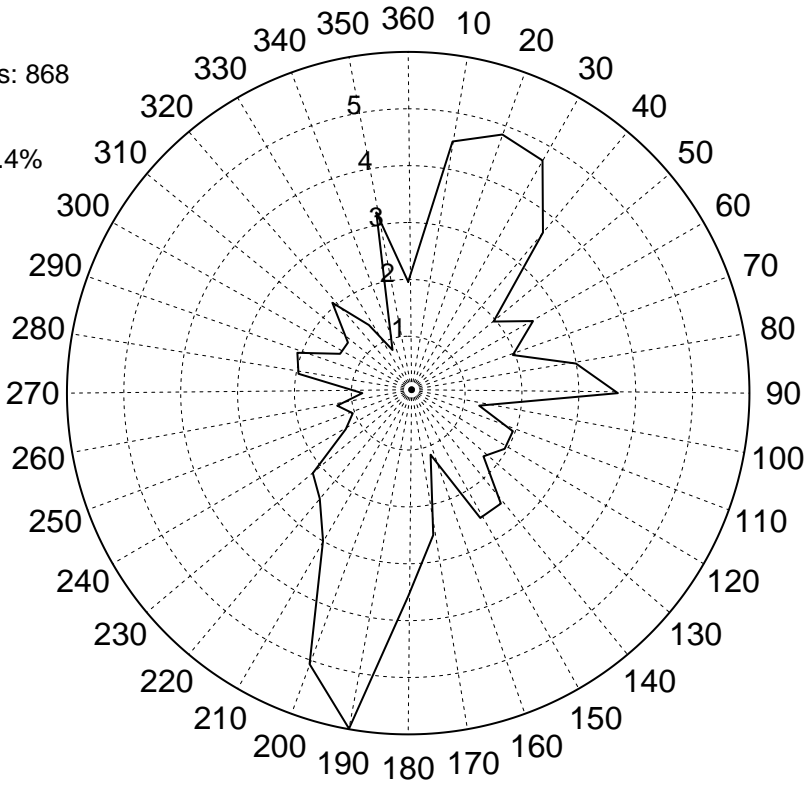
Frequency of wind direction (%)

Aerodrome

Total observations: 868

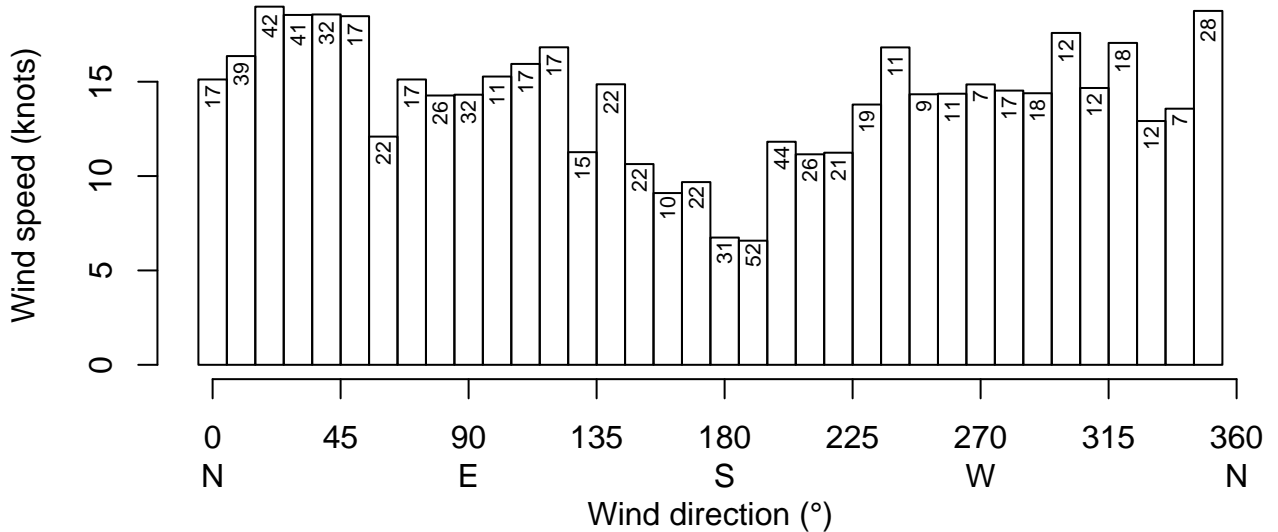
Calm: 5.2%

Variable winds: 5.4%



Average wind speed for wind direction

(Number of observations for wind direction)



Wind rose BITN December 2005–2014

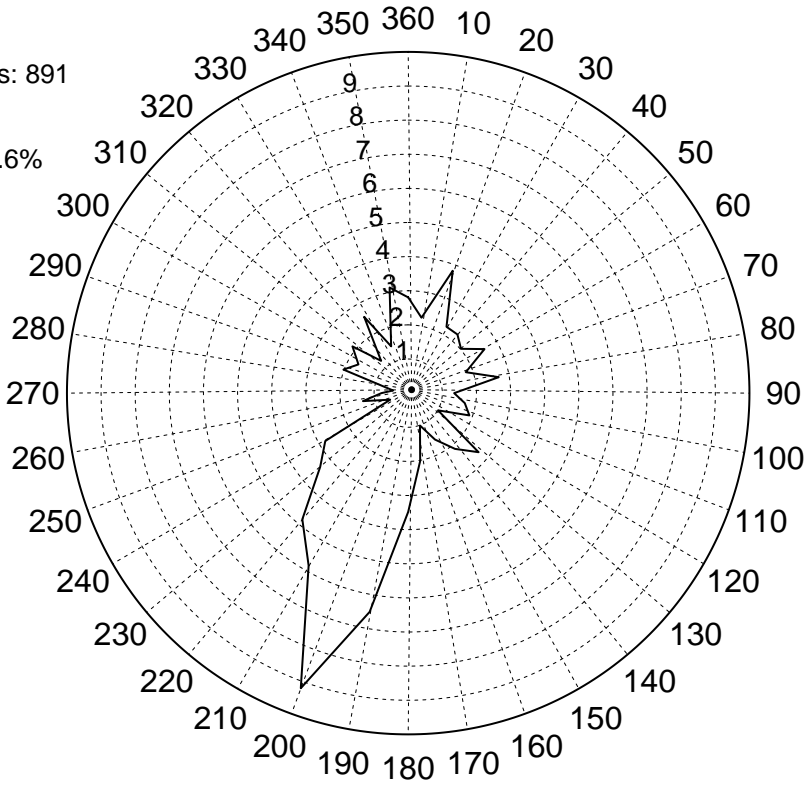
Frequency of wind direction (%)

Aerodrome

Total observations: 891

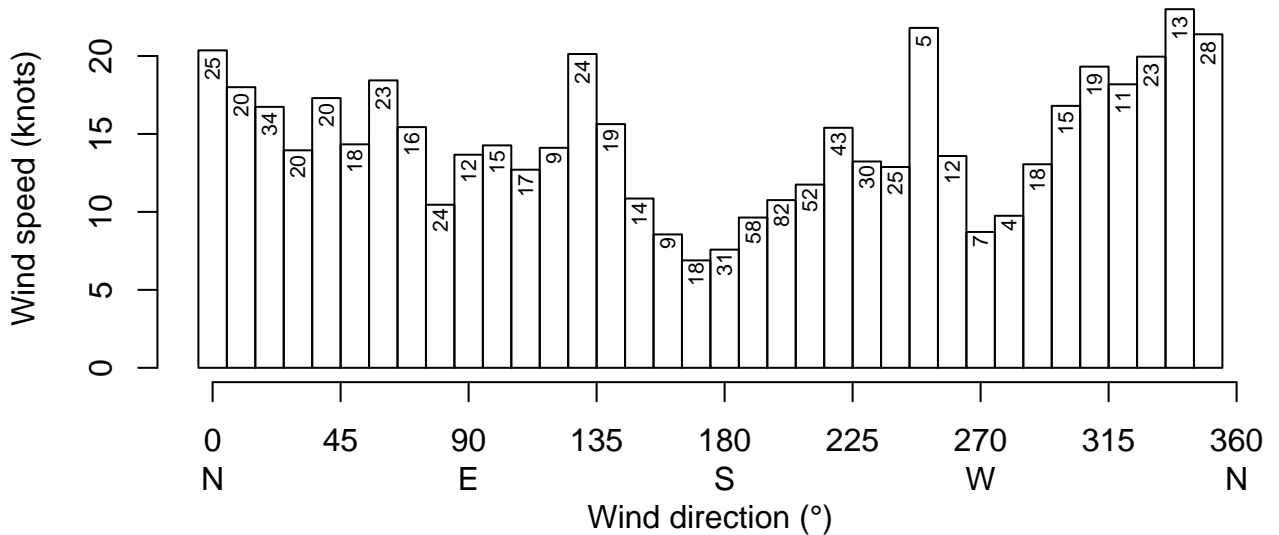
Calm: 4.2%

Variable winds: 4.6%

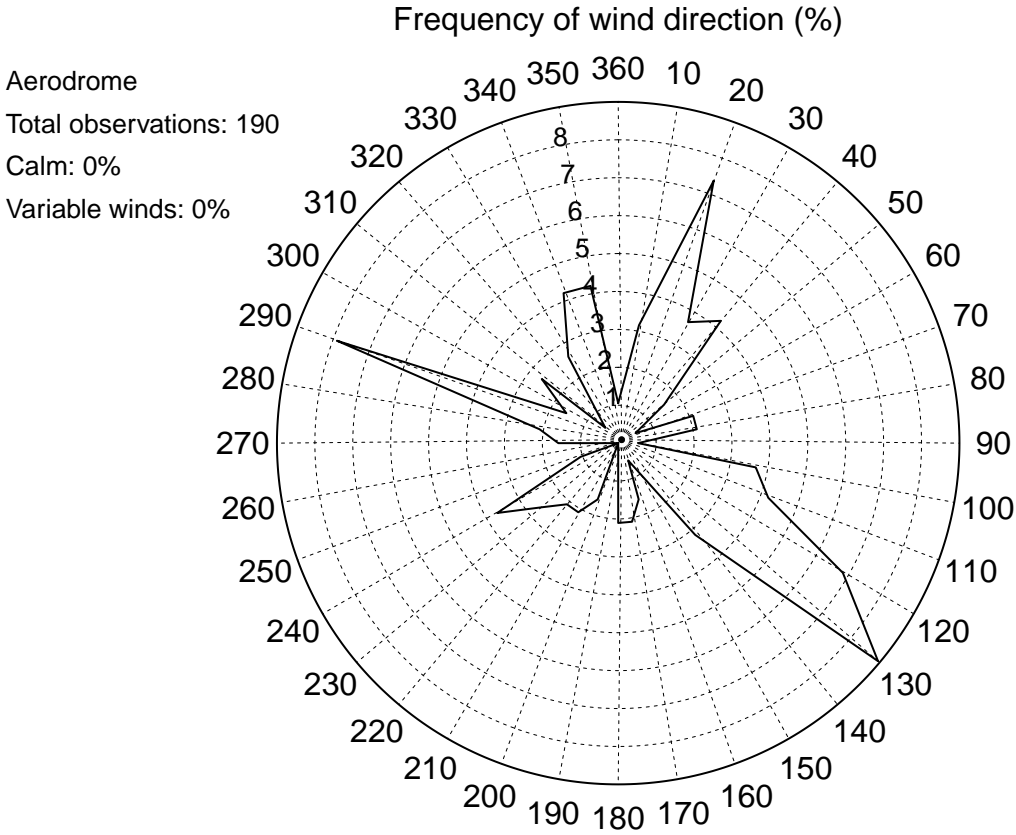


Average wind speed for wind direction

(Number of observations for wind direction)

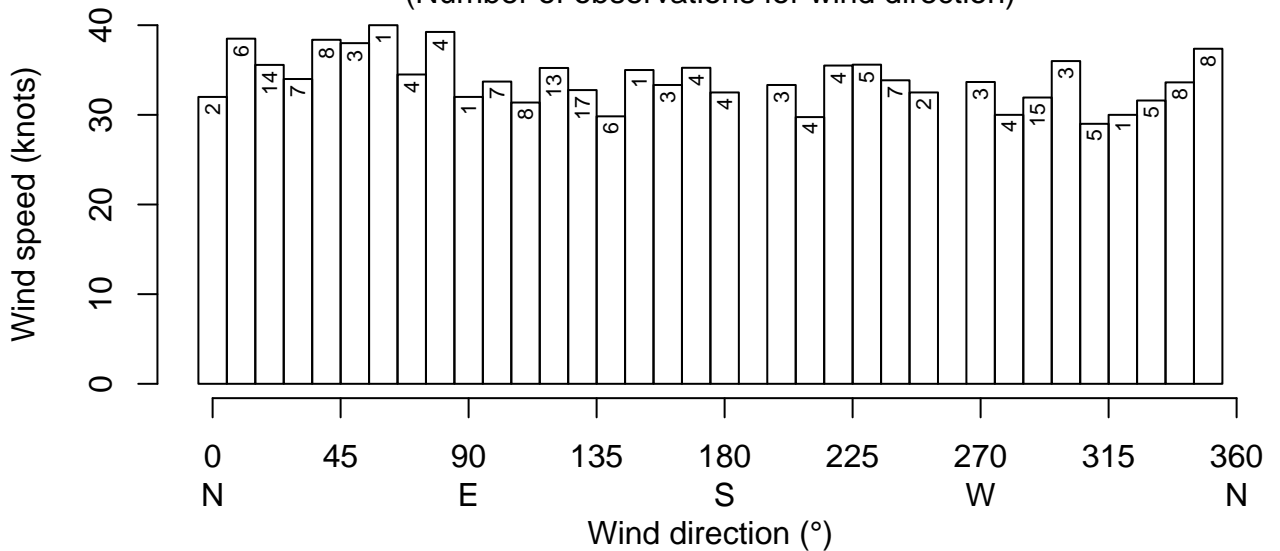


BITN gusts exceeding 40 knots (2005–2014)



Average wind speed for wind direction

(Number of observations for wind direction)



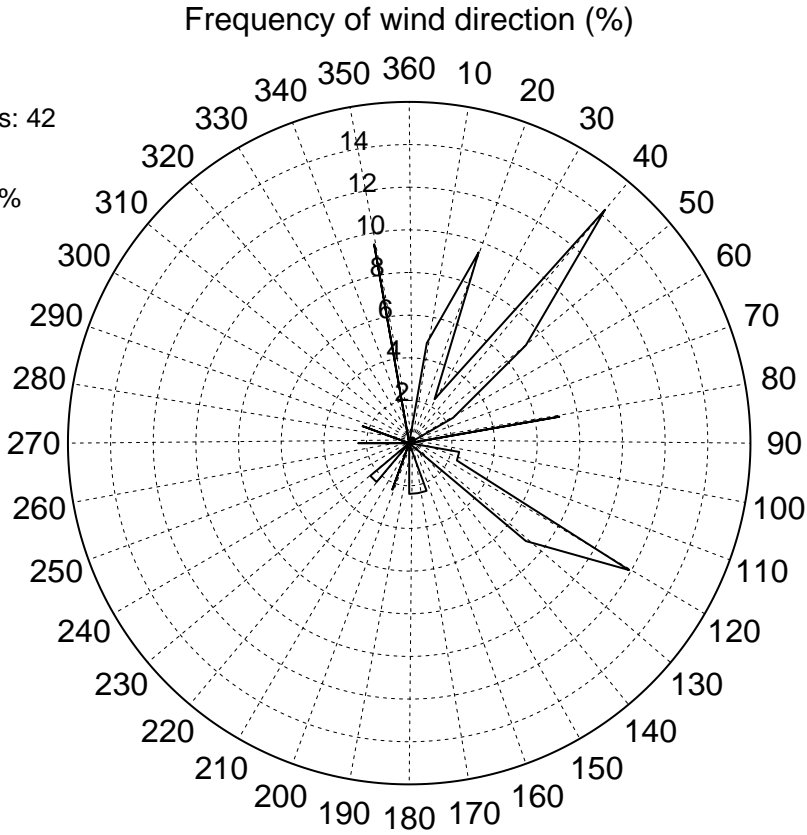
BITN gusts exceeding 50 knots (2005–2014)

Aerodrome

Total observations: 42

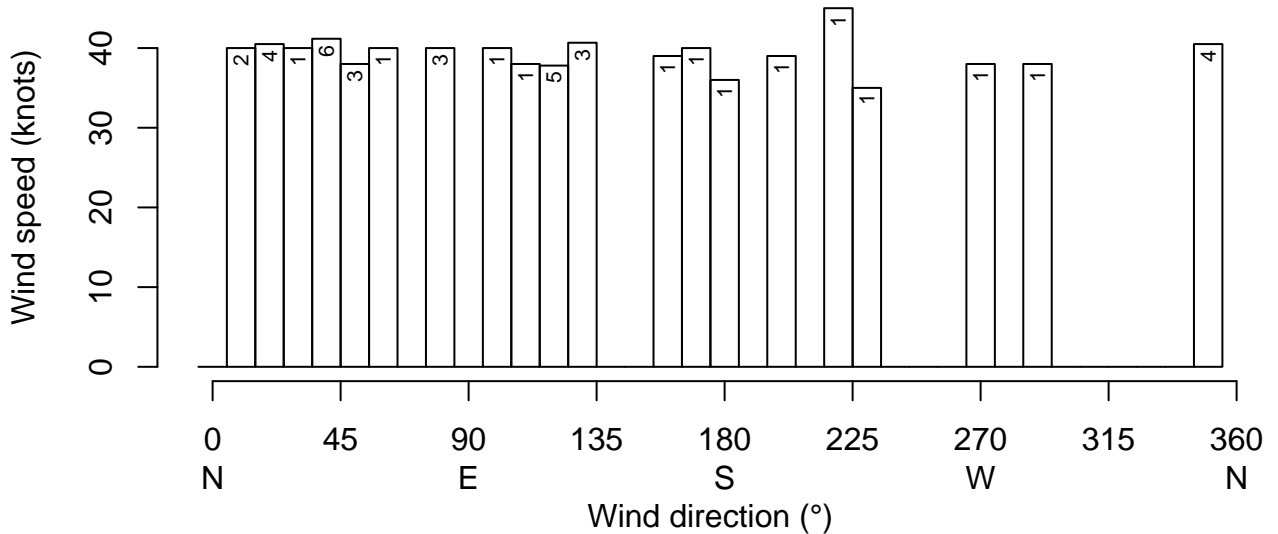
Calm: 0%

Variable winds: 0%



Average wind speed for wind direction

(Number of observations for wind direction)



BITN gusts exceeding 60 knots (2005–2014)

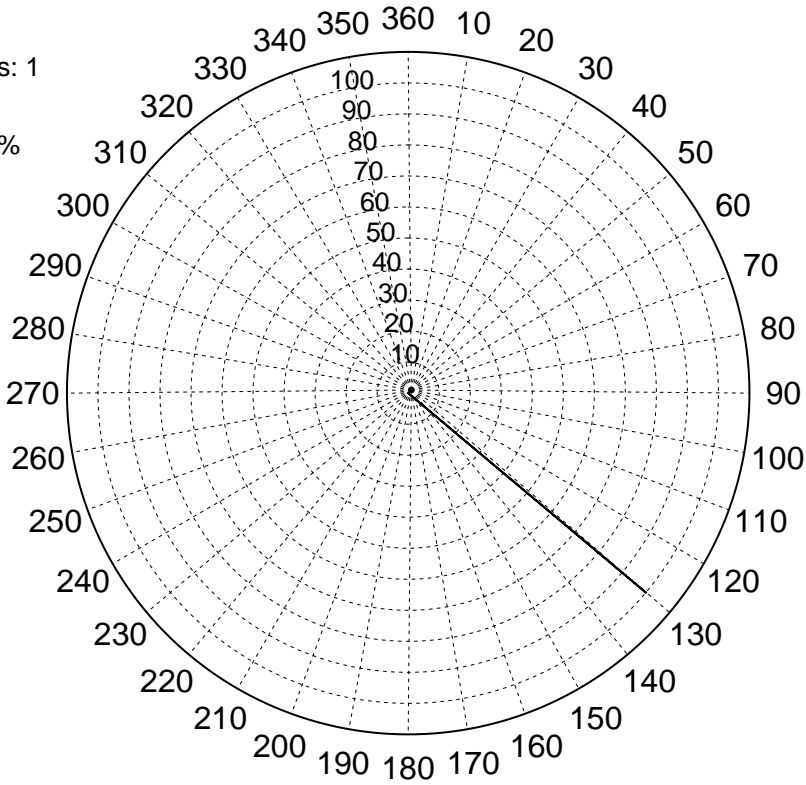
Frequency of wind direction (%)

Aerodrome

Total observations: 1

Calm: 0%

Variable winds: 0%



Average wind speed for wind direction

(Number of observations for wind direction)

